

5. Press the “+” button , and enter the following information in the new property sheet:
6. For **Network** – enter “**UTORwin**” for **Password** – enter “**UToronto1home**” and save your entries
7. Click **Apply Now** to save the new settings

Choose a security type and enter the name of the AirPort network to join with an optional password.

Network Name:

Wireless Security:

Password: Show password

To prevent your computer from automatically connecting to suspicious networks, in the Airport section of System Preference, make sure the **By Default** section is set on “**Preferred Networks**”.

Then click on the **Options** button and select “**Ask Before Joining a Network**” under the section “**If No Preferred Network is Found**”.

Finally, make sure the “**Automatically Add New Networks to the Network List**” option is unchecked.

Logging in - For all systems

When your computer is in range of an access point, and at the beginning of your internet session, your browser will only be able to access the **CWN login page**. If your browser does not automatically show the login page, click the **refresh** button on your browser, or enter a url address that is different than your homepage (eg. **www.google.ca**).

Enter your UTORid and password to connect to the internet.

Your wireless internet session will automatically log off after being idle for 30 minutes.

All students have a bandwidth quota of 2 gigabytes per week.

Running the Endpoint Security Policy - ESP (for Windows only)

The Endpoint Security Policy is an application designed to test Windows computers to ensure that all the latest software patches from Microsoft are installed. You must pass this security test before you can connect to the internet.

1. After connecting to the CWN, launch your internet browser, and log in using your UTORid, you will then be directed to the Endpoint Security Test page. Download the ESP application.
2. Disable any firewall programs you may have. This is usually done by right clicking on your **firewall’s icon** in the **task tray** and selecting “**disable**”.
3. Execute your downloaded copy of the ESP program.

When the program has finished scanning, your browser will open and inform you whether or not your computer has passed the ESP.

If your computer passed the ESP, no further action is required and you may now access the internet. If it failed, update your computer with the latest Windows software patches. This can be done by clicking on the link in the page displayed, or by going to **update.microsoft.com** using Internet Explorer.

You will need a valid copy of Windows in order to access the Windows Update website. Multiple restarts may be needed and you may have to access Windows Update several times to download all the updates. When no more updates are available, run the ESP application again. As always, the staff at the Tech Desk will be available to assist you.

Signal Strength

Like all wireless systems, radio strength for the CWN is not uniform across campus and in buildings. If your connection is unusually slow or unreliable try moving to a different area of the library.

Connecting to the Campus Wireless Network

Farquharson Information Commons



SSID : UTORwin
WEP Key: UToronto1home

E. J. Pratt
Library

About the Campus Wireless Network (CWN)

The University of Toronto offers wireless internet access in many of its buildings through the **Campus Wireless Network (CWN)** service. CWN is available to all students and faculty with a **UTORid** and it is accessible in both the **Emmanuel College Library** and the **E.J. Pratt library**.

Use of the wireless network is governed by the same policies as other information technology services on campus. **Coverage maps** listing the buildings which support the CWN are available at <http://wireless.utoronto.ca/maps.html>.

To connect to the CWN you will need:

- A device with wireless LAN networking capabilities
- A UTORid and password
- Up to date security patches for Windows and Microsoft Office—if using a Windows laptop.

Setting up your computer to connect to the CWN is not always an easy process. The staff at the **Tech Desk**, located adjacent to the **South Commons** at the **EJ Pratt library**, will be glad to help you connect to the wireless network and answer any questions you may have.

Before connecting to the CWN

In order to access the CWN you will need to set up a new wireless network profile. This only needs to be done once.

Warning: It is likely that your wireless device might detect various wireless networks with names similar to the CWN. Please note that :

The identifier (SSID) for the campus wireless network is 'UTORwin'

Any network that is not identified with this SSID, or can accept connections without the correct WEP password, is not part of the Campus wireless internet system and is not supported by the University of Toronto or Victoria University.

Creating a Wireless Network Profile with Windows 7

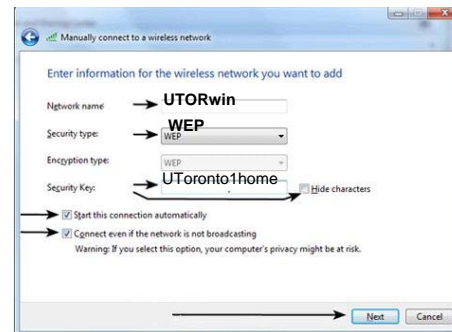
1. Ensure that your device's wireless connection is turned on and enabled. Consult your owner guide or online help for instructions.
2. Click on the wireless icon in the bottom right hand of your screen, and click on **Open Network and Sharing Center**.



3. Click **Manage Wireless Networks**



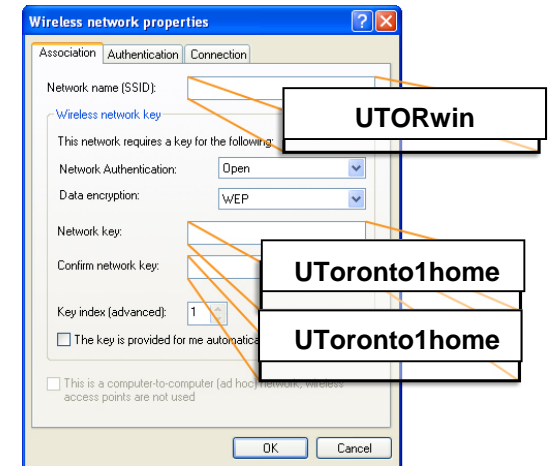
4. Click **Add** then select **Manually Create a Network Profile**



5. Enter the settings shown in the image below

Creating a Wireless Network Profile with Windows XP

1. Ensure that your device's wireless connection is turned on and enabled.
2. Under the **Start** menu select **Control Panel** and then **Network Connections**



3. **Right click** your **Wireless Connection** and select **Properties**
4. Select the **Wireless Network** tab.
5. Select **Add**. In **Wireless network properties** enter the settings as shown in the image below.
6. Click **Ok**, and close all open windows. Your computer should now detect and connect to the CWN.
7. If this is the first time your computer has connected to the CWN, **you will be asked to run a computer security check** before you can access the internet. This check is called the **ESP**, please refer to the next section for more information.

Creating a profile for connecting to the CWN with Mac OS X

To connect to the CWN in Mac OSX, please do the following:

1. In the **Apple Menu** (accessed by clicking on the **Apple Icon**), select **System Preferences**
2. Select the **Network Icon**
3. In the **Show** drag-down menu, select **Airport**
4. In the **By Default Join** menu, select **"Preferred Networks"**