

VICTORIA UNIVERSITY
(COBOURG, ONT.)
DEPARTMENT OF MEDICINE

87.144V 10S-1

STUDENT REGISTER
'1858-1875

TR
IN
AC
DE
RE
RO
PF
OR

IT
PF
WE
WH
ST
RE

RE

M
DA

Ca
CAL

XE
CO

CERTIFICATE OF AUTHENTICITY

THIS IS TO CERTIFY THAT THE MICROPHOTOGRAPHIC IMAGES APPEARING ON THIS ROLL OF MICROFILM ARE ACCURATE AND COMPLETE RECORDS OF MATERIAL DELIVERED TO XEBEC, AND WERE MICROFILMED IN THE REGULAR COURSE OF BUSINESS PURSUANT TO ESTABLISHED ROUTINE POLICY FOR THE MAINTENANCE AND PRESERVATION OF SUCH RECORDS THROUGH THE STORAGE OF SUCH MICROFILMS IN PROTECTED LOCATIONS.

IT IS FURTHER CERTIFIED THAT THE PHOTOGRAPHIC PROCESSES USED FOR MICROFILMING THE ABOVE RECORDS WERE ACCOMPLISHED IN A MANNER AND ON MICROFILM WHICH MEETS THE RECOMMENDED REQUIREMENTS OF THE STANDARDS FOR PERMANENT MICROPHOTOGRAPHIC REPRODUCTIONS.

87.144V 102-1
ITEM

15X
REDUCTION RATIO

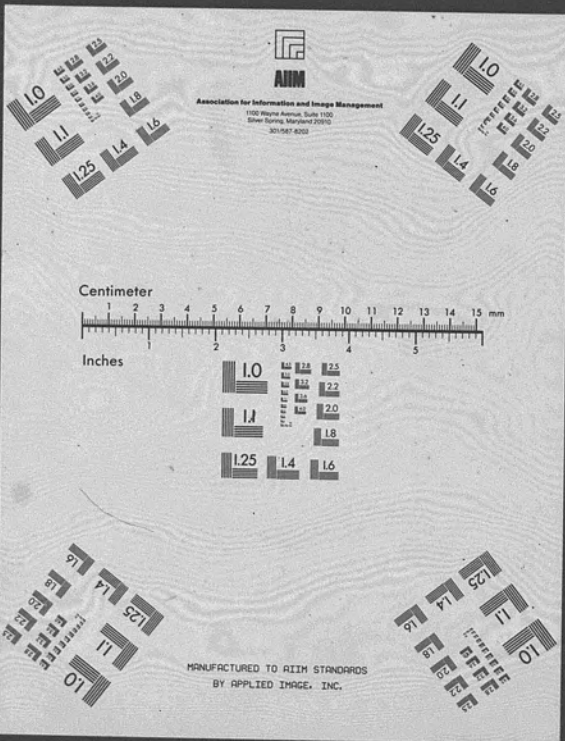
MAR 10 / 98
DATED MICROFILMED

Barbara Chwojka
CAMERA OPERATOR

XEBEC IMAGING SERVICES INC.
CONCORD, ONTARIO, CANADA

PHIC
LM ARE
L
IN THE
STABLISHED
STORAGE
S.

PHIC
E RECORDS
ROFILM
OF THE
C



1860

University of Victoria College Medical

Practical Department 1861

Name Residence Denomination Year Anatomy Physiology Medicine Surgery Midwifery M. Public Health Anatomy Pathology Clinical Jurisprudence Regis.

No.	Name	Residence	Denomination	Year	1860-1861												
					Anatomy	Physiology	Medicine	Surgery	Midwifery	M. Public	Health	Anatomy	Pathology	Clinical	Jurisprudence	Regis.	
1	William Smith	Barrington	A. Catholic	1	12	12	12	12	12	12	12	5	5				2
2	John Bowman	North Hill	Free	3	12	12	12	12	12	12	12	5	5	12	5		2
3	Mr Stewart	Island	W. Methodist	1	12	12	12	12	12	12	12	5	5	12	5		2
4	John Delaney	Essexville	W. Methodist	2	12	12	12	12	12	12	12	5	5	12	5		2
5	John Mitchell	Manilla	Presbyterian	1	12	12	12	12	12	12	12	5	5	12	5		2
6	John Small	Selfe	R. Catholic	2	12	12	12	12	12	12	12	5	5	12	5		2
7	Thomas Shuttlecock	Essexville	Episcopalian	2	12	12	12	12	12	12	12	5	5	12	5		2
8	John Stewart	Essexville	Presbyterian	3	12	12	12	12	12	12	12	5	5	12	5		2
9	Henry Rogers	Manilla	Presbyterian	1	12	12	12	12	12	12	12	5	5	12	5		2
10	John W. Smith	Woodstock	Presbyterian	1	12	12	12	12	12	12	12	5	5	12	5		2
11	John Bourne	Essexville	Presbyterian	1	12	12	12	12	12	12	12	5	5	12	5		2
12	Thomas W. Smith	Essexville	Presbyterian	1	12	12	12	12	12	12	12	5	5	12	5		2
13	David Brown	Island	R. Catholic	1	12	12	12	12	12	12	12	5	5	12	5		2
14	Thomas W. Smith	Essexville	Presbyterian	1	12	12	12	12	12	12	12	5	5	12	5		2
15	John W. Smith	Essexville	Presbyterian	2	12	12	12	12	12	12	12	5	5	12	5		2
16	Alfred Kelly	Essexville	Episcopalian	1	12	12	12	12	12	12	12	5	5	12	5		2
17	James W. Smith	Essexville	"	1	12	12	12	12	12	12	12	5	5	12	5		2
18	William W. Smith	Essexville	"	1	12	12	12	12	12	12	12	5	5	12	5		2
19	John W. Smith	Essexville	"	3	12	12	12	12	12	12	12	5	5	12	5		2
20	David W. Smith	Woodstock	Episcopalian	1	12	12	12	12	12	12	12	5	5	12	5		2
21	John W. Smith	Woodstock	Presbyterian	1	12	12	12	12	12	12	12	5	5	12	5		2
22	James W. Smith	Woodstock	Presbyterian	1	12	12	12	12	12	12	12	5	5	12	5		2
23	Charles F. Peter	Essexville	Presbyterian	1	12	12	12	12	12	12	12	5	5	12	5		2
24	George W. Smith	Essexville	Presbyterian	1	12	12	12	12	12	12	12	5	5	12	5		2
25	John W. Smith	Essexville	Presbyterian	1	12	12	12	12	12	12	12	5	5	12	5		2
26	John W. Smith	Essexville	Presbyterian	3	12	12	12	12	12	12	12	5	5	12	5		2
27	John W. Smith	Essexville	Presbyterian	3	12	12	12	12	12	12	12	5	5	12	5		2
28	John W. Smith	Essexville	Presbyterian	3	12	12	12	12	12	12	12	5	5	12	5		2
29	John W. Smith	Essexville	Presbyterian	2	12	12	12	12	12	12	12	5	5	12	5		2
30	John W. Smith	Essexville	Presbyterian	2	12	12	12	12	12	12	12	5	5	12	5		2
31	John W. Smith	Essexville	Presbyterian	1	12	12	12	12	12	12	12	5	5	12	5		2
32	John W. Smith	Essexville	Presbyterian	4	12	12	12	12	12	12	12	5	5	12	5		2
33	John W. Smith	Essexville	Presbyterian	2	12	12	12	12	12	12	12	5	5	12	5		2
34	John W. Smith	Essexville	Presbyterian	1	12	12	12	12	12	12	12	5	5	12	5		2
35	John W. Smith	Essexville	Presbyterian	1	12	12	12	12	12	12	12	5	5	12	5		2
36	John W. Smith	Essexville	Presbyterian	3	12	12	12	12	12	12	12	5	5	12	5		2
					26%	28%	28%	29%	29%	28%	27%	31%	23%	23%	35		

University of Victoria. College. Medical.

Department. Session 1860-61

Name	Residence	Dominion	years	Naturaly	Physic	Medicine	Surgery	Midwifery	Chemistry	Pharmacology	Pathology	Jurisprudence	Registration
37	George Forbes	Maricouche	1	12	12	12	12	12	5	5	12	5	2 M. B. P.
38	Seaborn Brock	Leitch	1	12	12	12	12	12	5	5	12	5	2
39	James C. Madill	Rosemount	2	12	12	12	12	12	5	5	12	5	2 M. B. P.
40	Edward Allen	St. John's	3	12	12	12	12	12	5	5	12	5	2
41	Samuel Graham	Forster	3	12	12	12	12	12	5	5	12	5	2
42	George C. Clegg	Essex	1	12	12	12	12	12	5	5	12	5	2
43	James W. Laughlin	Essex	2	12	12	12	12	12	5	5	12	5	2 M. B. P.
44	John Baird	Manilla	3	12	12	12	12	12	5	5	12	5	2
45	Alfred A. Gordon	St. John's	2	12	12	12	12	12	5	5	12	5	2
46	Joseph C. Clegg	Essex	2	12	12	12	12	12	5	5	12	5	2
47	Joseph C. Clegg	Essex	2	12	12	12	12	12	5	5	12	5	2
48	George C. Clegg	Essex	2	12	12	12	12	12	5	5	12	5	2
49	James W. Laughlin	Essex	2	12	12	12	12	12	5	5	12	5	2
50	David Bennett	Essex	2	12	12	12	12	12	5	5	12	5	2 M. B. P.
51	John C. Clegg	Essex	2	12	12	12	12	12	5	5	12	5	2 M. B. P.
52	B. H. Bradley	Newcastle	1	12	12	12	12	12	5	5	12	5	2
53	William C. Clegg	Essex	1	12	12	12	12	12	5	5	12	5	2
54	J. G. Jackson	Essex	3	12	12	12	12	12	5	5	12	5	2
55	John C. Clegg	Essex	1	12	12	12	12	12	5	5	12	5	2
56	John C. Clegg	Essex	3	12	12	12	12	12	5	5	12	5	2
57	S. M. May	Essex	3	12	12	12	12	12	5	5	12	5	2
58	William C. Clegg	Essex	1	12	12	12	12	12	5	5	12	5	2
59	William C. Clegg	Essex	1	12	12	12	12	12	5	5	12	5	2
60	William C. Clegg	Essex	3	12	12	12	12	12	5	5	12	5	2
61	W. C. Clegg	Essex	2	12	12	12	12	12	5	5	12	5	2
62	Donald Jackson	Essex	1	12	12	12	12	12	5	5	12	5	2 M. B. P.
63	James C. Clegg	Essex	2	12	12	12	12	12	5	5	12	5	2
64	James C. Clegg	Essex	2	12	12	12	12	12	5	5	12	5	2
65	W. C. Clegg	Essex	3	12	12	12	12	12	5	5	12	5	2
66	Robert D. Jackson	Essex	3	12	12	12	12	12	5	5	12	5	2
67	William C. Clegg	Essex	3	12	12	12	12	12	5	5	12	5	2
68	William C. Clegg	Essex	2	12	12	12	12	12	5	5	12	5	2 M. B. P.
69	William C. Clegg	Essex	1	12	12	12	12	12	5	5	12	5	2
70	William C. Clegg	Essex	2	12	12	12	12	12	5	5	12	5	2
71	Henry Smith	Essex	3	12	12	12	12	12	5	5	12	5	2
				25	26	24	25	24	25	21	20	29	31

Medical Department of Victoria

College. Session 1900-01

Name	Residence	Denomination	Year	Anatomy	Physiology	Medicine	Surgery	Hygiene	Inst. Pract.	Chemistry	Botany	Zoology	Physical Science	Registration
73. Geo C Schulte	Sea Breeze Settlement	Congregational	Three	12	12	12	12	12	12	5	5	12	5	2
74. Agostini A. Campelli	Keaton-ton	R. C.	1st	12	12	12	12	12	12	5	5	12	5	2
75. Edgar H. Barnick	Winnichville	English	3 rd			12	12	12					5	2
76. William Boston	Corona	Independent	1 st	12	12	12	12	12	12	5	5	12	5	5
77. William de Jure	Prince-Albert	Methodist	1 st	12	12	12	12	12	12	5	5	12	5	2
78. John Ernest King	St. John's	Episcopalian	5 th	12	12	12	12	12	12	15	5	12	5	2
79. E. P. Hutton	Thorn	Rev	11 3 rd	12	12	12	12	12	12	15	5	12	5	2
80. W. Anderson	Orbit	Methodist	1 st	12										
81. Thomas Hutchinson	Sulph. Church	England	1 st											
				5	5	6	6	6	5	5	5	5	5	6
				25%	26%	24%	25%	26%	24%	25%	24%	25%	24%	25%
				28%	28 1/2%	28%	26%	29%	28%	27%	31 1/2%	22%	22%	35%
				38%	39%	38%	60%	61%	57%	57%	67%	47%	46%	74%

University of Victoria College
Summer

Medical Department
Session of the year 1867

Name	Residence	Denomination	Year	Qualification	Registration	Repetition
1. Amos J. Jones	H. Jones	Baptist	1 st			
2. Wm. H. Lawrence	Victoria	Methodist	3 rd			
3. Brewster P. Brown	Victoria	Methodist	2 nd			
4. David L. Jones	Victoria	Methodist	1 st			
5. James D. Stewart	Toronto	Episcopal	3 rd			
6. Donald Jackson	Edson	Presbyterian	1 st			
7. Charles H. Bennett	Victoria	Episcopal	4 th			
8. William A. Lee	Victoria	Methodist	1 st			
9. W. H. Staker	Victoria	Methodist	3 rd			
10. R. W. Mitchell	Burghan	Methodist				
11. B. S. Bradley	Grafton	Christian	2 nd			
12. A. J. Brown	Victoria	Baptist	2 nd			
13. John C. Hauley	Edson	Episcopal	3 rd			
14. David Brown	Victoria	Methodist	1 st			
15. Daniel O. Van Velsor	Angal	Baptist				
16. Brown						
17. Allison						
18. Cass						
19. Service						
20. L. M. Langdon	Victoria	Baptist	3 rd			
21. H. Duncan	Victoria	Methodist				
22. Wm. G. Williams	Waldron	Methodist	5 th			
23. J. G. Davidson	Victoria	Methodist				
24. Wm. G. Davidson	Victoria	Baptist				

No.	Names	Noble	Church	Winter 1861			1862					Medical	Nautical	Clinical	Registrations
				Year	Anatomy	Surgery	Physiology	Medicine	Medicines	Natural	Pathology				
1	John W. Saffey	Wester	West. Epis.												
2	W. G. ...	Wester	Presbyterian	3	12	12	12	12	12	12	7	7	7	5	2
3	W. C. ...	Wester	Episcopal	1	12	12	12	12	12	12	7	7	7	5	2
4	1	12	12	12	12	12	12	7	7	7	5	2
5	Joseph H. ...	Wester	Methodist	1	12	12	12	12	12	12	7	7	7	5	2
6	Robert ...	Wester	Presbyterian	1	12	12	12	12	12	12	7	7	7	5	2
7	1	12	12	12	12	12	12	7	7	7	5	2
8	1	12	12	12	12	12	12	7	7	7	5	2
9	1	12	12	12	12	12	12	7	7	7	5	2
10	1	12	12	12	12	12	12	7	7	7	5	2
11	1	12	12	12	12	12	12	7	7	7	5	2
12	1	12	12	12	12	12	12	7	7	7	5	2
13	1	12	12	12	12	12	12	7	7	7	5	2
14	1	12	12	12	12	12	12	7	7	7	5	2
15	1	12	12	12	12	12	12	7	7	7	5	2
16	1	12	12	12	12	12	12	7	7	7	5	2
17	1	12	12	12	12	12	12	7	7	7	5	2
18	1	12	12	12	12	12	12	7	7	7	5	2
19	1	12	12	12	12	12	12	7	7	7	5	2
20	1	12	12	12	12	12	12	7	7	7	5	2
21	1	12	12	12	12	12	12	7	7	7	5	2
22	1	12	12	12	12	12	12	7	7	7	5	2
23	1	12	12	12	12	12	12	7	7	7	5	2
24	1	12	12	12	12	12	12	7	7	7	5	2
25	1	12	12	12	12	12	12	7	7	7	5	2
26	1	12	12	12	12	12	12	7	7	7	5	2
27	1	12	12	12	12	12	12	7	7	7	5	2
28	1	12	12	12	12	12	12	7	7	7	5	2
29	1	12	12	12	12	12	12	7	7	7	5	2
30	1	12	12	12	12	12	12	7	7	7	5	2
31	1	12	12	12	12	12	12	7	7	7	5	2
32	1	12	12	12	12	12	12	7	7	7	5	2
33	1	12	12	12	12	12	12	7	7	7	5	2
34	1	12	12	12	12	12	12	7	7	7	5	2
35	1	12	12	12	12	12	12	7	7	7	5	2
36	1	12	12	12	12	12	12	7	7	7	5	2

Name	Residence	Denomination	Year	1861				1862				1863				Registration
				Anatomy	Surgery	Physiology	Medicine	Midwifery	Nature	Pathology	Community	Medical Jurisprudence	Practical Anatomy	Clinics		
37. S. S.	12 th	12 th	12 th	12 th	12 th	12 th	12 th	7 th	7 th	7 th	5 th	5 th	2
38. W. H.	12	12	12	12	12	12	12	"	"	"	5	5	2
39. J. W.	12	12	12	12	12	12	12	"	"	"	5	5	2
40.	12	12	12	12	12	12	12	"	"	"	5	5	2
41. A. W.	3 rd	"	"	"	"	"	"	"	"	"	5	"	2
42.	5 th	12	12	12	12	12	12	7	7	7	5	"	2
43.	2 nd	12	12	12	12	12	12	7	7	7	5	"	2
44.	3 rd	12	12	12	12	12	12	7	7	7	5	"	2
45.	1 st	12	12	12	12	12	12	7	7	7	5	"	2
46.	2 nd	12	12	12	12	12	12	7	7	7	5	"	2
47.	1 st	12	12	12	12	12	12	7	7	7	5	"	2
48.	1 st	12	12	12	12	12	12	7	7	7	5	"	2
49.	3 rd	"	"	"	"	"	"	"	"	"	5	"	2
50.	2 nd	12	12	12	12	12	12	7	7	7	5	"	2
51.	2	12	12	12	12	12	12	7	7	7	5	"	2
52.	1	12	12	12	12	12	12	7	7	7	5	"	2
53.	2 nd	12	12	12	12	12	12	7	7	7	5	"	2
54.	2 nd	"	"	"	"	"	"	"	"	"	5	"	2
55.	3 rd	"	"	"	"	"	"	"	"	"	5	"	2
56.	3 rd	"	"	"	"	"	"	"	"	"	5	"	2
57.	1 st	12	12	12	12	12	12	7	7	7	5	"	2
58.	1 st	12	12	12	12	12	12	7	7	7	5	"	2
59.	3 rd	"	"	"	"	"	"	"	"	"	5	"	2
60.	1 st	12	12	12	12	12	12	7	7	7	5	"	2
61.	3 rd	"	"	"	"	"	"	"	"	"	5	"	2
62.	3 rd	12	12	12	12	12	12	7	7	7	5	"	2
63.	1 st	"	"	"	"	"	"	"	"	"	5	"	2
64.	1	12	12	12	12	12	12	7	7	7	5	"	2
65.	1	12	12	12	12	12	12	7	7	7	5	"	2
66.	2	12	12	12	12	12	12	7	7	7	5	"	2
67.	3	12	12	12	12	12	12	7	7	7	5	"	2
68.	1	10	12	12	12	12	12	7	7	7	5	"	2
69.	2	12	12	12	12	12	12	7	7	7	5	"	2
70.	3 rd	"	"	"	"	"	"	"	"	"	5	"	2
71.	3 rd	12	12	12	12	12	12	7	7	7	5	"	2
72.	2 nd	12	12	12	12	12	12	7	7	7	5	"	2

Winter
1861

Spring
1862

Name	Residence	Denomination	Year	Anatomy	Surgery	Physiology	Medicine	Midwifery	Pharm	Pathology	Chemistry	Hygiene	Medical Practice	Registration
37. H. Sinclair	Chapel	Congregational	1 st	12	12	12	12	12	12	7	7	7	5	2
38. F. Burns	Rockwood	Episcopalian	3 rd	12	12	12	12	12	12	7	7	7	5	2
39. J. W. Hale	Putt. exp.	W. Method	2 nd	12	12	12	12	12	12	7	7	7	5	2
40. C. H.	12	12	12	12	12	12	7	7	7	5	2
41. A. W.	5	2
42.	5	2
43.	12	12	12	12	12	12	7	7	7	5	2
44.	12	12	12	12	12	12	7	7	7	5	2
45.	12	12	12	12	12	12	7	7	7	5	2
46.	12	12	12	12	12	12	7	7	7	5	2
47.	12	12	12	12	12	12	7	7	7	5	2
48.	12	12	12	12	12	12	7	7	7	5	2
49.	12	12	12	12	12	12	7	7	7	5	2
50.	12	12	12	12	12	12	7	7	7	5	2
51.	12	12	12	12	12	12	7	7	7	5	2
52.	12	12	12	12	12	12	7	7	7	5	2
53.	12	12	12	12	12	12	7	7	7	5	2
54.	12	12	12	12	12	12	7	7	7	5	2
55.	12	12	12	12	12	12	7	7	7	5	2
56.	12	12	12	12	12	12	7	7	7	5	2
57.	12	12	12	12	12	12	7	7	7	5	2
58.	12	12	12	12	12	12	7	7	7	5	2
59.	12	12	12	12	12	12	7	7	7	5	2
60.	12	12	12	12	12	12	7	7	7	5	2
61.	12	12	12	12	12	12	7	7	7	5	2
62.	12	12	12	12	12	12	7	7	7	5	2
63.	12	12	12	12	12	12	7	7	7	5	2
64.	12	12	12	12	12	12	7	7	7	5	2
65.	12	12	12	12	12	12	7	7	7	5	2
66.	12	12	12	12	12	12	7	7	7	5	2
67.	12	12	12	12	12	12	7	7	7	5	2
68.	12	12	12	12	12	12	7	7	7	5	2
69.	12	12	12	12	12	12	7	7	7	5	2
70.	12	12	12	12	12	12	7	7	7	5	2
71.	12	12	12	12	12	12	7	7	7	5	2
72.	12	12	12	12	12	12	7	7	7	5	2

No.	Name	Residence	Denomination	Year	Anatomy	Zoology	Surgery	Medica			Natural			Pharmacology	Registration	
								Medicine	Natural	Medicine	Pathology	Chemistry	Foreign			
73	Saml. Kelly	Lebanon	W. Methodist	11	12	12	12	12	12	12	12	12	12	12	12	12
74	W. P. Bingham	W. Ontario	Com. Episcop.	2	12	12	12	12	12	12	12	12	12	12	12	12
75	John W. Woodruff	Windsorham	Methodist	4	12	12	12	12	12	12	12	12	12	12	12	12
76	W. H. Williams	Windsorham	"	3	12	12	12	12	12	12	12	12	12	12	12	12
77	Wm. H. Smith	Windsorham	Presbyterian	4	12	12	12	12	12	12	12	12	12	12	12	12
78	Wm. H. Smith	Windsorham	M. E.	3	12	12	12	12	12	12	12	12	12	12	12	12
79	Spencer Davis	Windsorham	W. P.	3	12	12	12	12	12	12	12	12	12	12	12	12
80	A. Blair Shaw	Toronto	Presby.	1	12	12	12	12	12	12	12	12	12	12	12	12
81	Wm. H. Smith	"	"	1	12	12	12	12	12	12	12	12	12	12	12	12
82	Wm. H. Smith	"	"	1	12	12	12	12	12	12	12	12	12	12	12	12
83	Wm. H. Smith	"	"	1	12	12	12	12	12	12	12	12	12	12	12	12
84	Wm. H. Smith	Toronto	Presbyterian	3	12	12	12	12	12	12	12	12	12	12	12	12
85	Wm. H. Smith	Windsorham	Presbyterian	2	12	12	12	12	12	12	12	12	12	12	12	12
86	Wm. H. Smith	Windsorham	Presbyterian	1	12	12	12	12	12	12	12	12	12	12	12	12
87	Wm. H. Smith	Windsorham	Presbyterian	1	12	12	12	12	12	12	12	12	12	12	12	12
88	Wm. H. Smith	Windsorham	Presbyterian	1	12	12	12	12	12	12	12	12	12	12	12	12
89	Wm. H. Smith	Windsorham	Presbyterian	1	12	12	12	12	12	12	12	12	12	12	12	12
90	John M. Doolittle	Windsorham	Presbyterian	1	12	12	12	12	12	12	12	12	12	12	12	12
91	Wm. H. Smith	Windsorham	Presbyterian	1	12	12	12	12	12	12	12	12	12	12	12	12
92	Wm. H. Smith	Windsorham	Presbyterian	2	12	12	12	12	12	12	12	12	12	12	12	12
93	Wm. H. Smith	Windsorham	Presbyterian	1	12	12	12	12	12	12	12	12	12	12	12	12
94	Wm. H. Smith	Windsorham	Presbyterian	4	12	12	12	12	12	12	12	12	12	12	12	12
95	Wm. H. Smith	Windsorham	Presbyterian	3	12	12	12	12	12	12	12	12	12	12	12	12

94
95
96

Summer

Session 1862.

Name	Residence	Denomination	Year	Profession	Language	Proficiency	Specimens	Chemistry	Botany
1. J. W. Smith	Franklin	Presb.	3 ^d	Physician					
2. J. A. G. J. J.	Clinton	W. Methodist	2 ^d						
3. H. J. J. J.	Watson	Methodist	1 st						
4. Henry James	Ballville	Presb.							
5. J. W. J. J.	W. J. J. J.	Presb.	1 st						
6. J. J. J. J.	W. J. J. J.	Presb.	2 ^d						
7. J. J. J. J.	W. J. J. J.	Presb.	3 ^d						
8. J. J. J. J.	W. J. J. J.	Presb.	4 th						
9. J. J. J. J.	W. J. J. J.	Presb.							
10. J. J. J. J.	W. J. J. J.	Presb.							
11. J. J. J. J.	W. J. J. J.	Presb.							
12. J. J. J. J.	W. J. J. J.	Presb.							
13. J. J. J. J.	W. J. J. J.	Presb.							
14. J. J. J. J.	W. J. J. J.	Presb.							
15. J. J. J. J.	W. J. J. J.	Presb.							
16. J. J. J. J.	W. J. J. J.	Presb.	4 th						
17. J. J. J. J.	W. J. J. J.	Presb.							
18. J. J. J. J.	W. J. J. J.	Presb.							
19. J. J. J. J.	W. J. J. J.	Presb.							

M. E. J. J.
June 1862

Winter
1862

Lesson -
1863

- | | | | |
|---|--------------|-----------|---|
| 1 | David H. ... | W. ... | 1 |
| 2 | B. H. ... | Christian | 3 |
| 3 | J. H. ... | Methodist | |
| 4 | ... | | 2 |
| 5 | ... | ... | 3 |

Full ...

Medical Department

Session 1862-1863.

Names	Residence	Examination Year	Dues, Path. & Anatomy			Medicine			Surgery			Registration	
			1862	1863	1864	1862	1863	1864	1862	1863	1864		
37. Geo. W. Harris	Coventry	Methodist	12	12	12	12	12	12	7	7	7	5	2
38. Wm. Colson	Colborne	Methodist	12	12	12	12	12	12	7	7	7	5	2
39. Geo. Jackson	Leitch	Episcopal	12	12	12	12	12	12	7	7	7	5	2
40. R. B. Parrott	Salerno	Methodist	12	12	12	12	12	12	7	7	7	5	2
41. James Rege	Coventry	Methodist	12	12	12	12	12	12	7	7	7	5	2
42. John C. Reid	Coventry	Methodist	12	12	12	12	12	12	7	7	7	5	2 M.C.P.
43. Wm. Colson	Coventry	Methodist	12	12	12	12	12	12	7	7	7	5	2 M.C.P.
44. Geo. Watson	Coventry	Methodist	12	12	12	12	12	12	7	7	7	5	3
45. Wm. Colson	Coventry	Methodist	12	12	12	12	12	12	7	7	7	5	4
46. Wm. Colson	Coventry	Methodist	12	12	12	12	12	12	7	7	7	5	2
47. Wm. Colson	Coventry	Methodist	12	12	12	12	12	12	7	7	7	5	2
48. Wm. Colson	Coventry	Methodist	12	12	12	12	12	12	7	7	7	5	2
49. Wm. Colson	Coventry	Methodist	12	12	12	12	12	12	7	7	7	5	2
50. Wm. Colson	Coventry	Methodist	12	12	12	12	12	12	7	7	7	5	2
51. Wm. Colson	Coventry	Methodist	12	12	12	12	12	12	7	7	7	5	2
52. Wm. Colson	Coventry	Methodist	12	12	12	12	12	12	7	7	7	5	2
53. Wm. Colson	Coventry	Methodist	12	12	12	12	12	12	7	7	7	5	2
54. Wm. Colson	Coventry	Methodist	12	12	12	12	12	12	7	7	7	5	2
55. Wm. Colson	Coventry	Methodist	12	12	12	12	12	12	7	7	7	5	2
56. Wm. Colson	Coventry	Methodist	12	12	12	12	12	12	7	7	7	5	2
57. Wm. Colson	Coventry	Methodist	12	12	12	12	12	12	7	7	7	5	2
58. Wm. Colson	Coventry	Methodist	12	12	12	12	12	12	7	7	7	5	2
59. Wm. Colson	Coventry	Methodist	12	12	12	12	12	12	7	7	7	5	2
60. Wm. Colson	Coventry	Methodist	12	12	12	12	12	12	7	7	7	5	2
61. Wm. Colson	Coventry	Methodist	12	12	12	12	12	12	7	7	7	5	2
62. Wm. Colson	Coventry	Methodist	12	12	12	12	12	12	7	7	7	5	2
63. Wm. Colson	Coventry	Methodist	12	12	12	12	12	12	7	7	7	5	2
64. Wm. Colson	Coventry	Methodist	12	12	12	12	12	12	7	7	7	5	2
65. Wm. Colson	Coventry	Methodist	12	12	12	12	12	12	7	7	7	5	2
66. Wm. Colson	Coventry	Methodist	12	12	12	12	12	12	7	7	7	5	2
67. Wm. Colson	Coventry	Methodist	12	12	12	12	12	12	7	7	7	5	2
68. Wm. Colson	Coventry	Methodist	12	12	12	12	12	12	7	7	7	5	2
69. Wm. Colson	Coventry	Methodist	12	12	12	12	12	12	7	7	7	5	2
70. Wm. Colson	Coventry	Methodist	12	12	12	12	12	12	7	7	7	5	2

26 27 28 29 30

Medical Department. Session 1862-1863.

Names	Residence	Communicated year	Quarantine		Hospital		Medical		Surgical		Regulations
			Quarantine	Hospital	Medical	Surgical	Medical	Surgical			
73 Perry Appleton	Hamilton	Methodist	3	"	"	"	"	"	"	"	2 M & P
74 George Cox	Windsor	Presbyterian	2	12	12	12	12	12	7	5	2
75 Joseph R. Fife	Chatham	W. Methodist	2	12	12	12	12	12	7	5	2
76 John Sutherland	Yorkville	Anglican	3	12	12	12	12	12	7	5	2
77 Hugh Hinchin	Hamilton	Presbyterian	3	12	12	12	12	12	7	5	2
78 A. Mackenzie	Toronto	"	3	12	12	12	12	12	7	5	2
79 John W. H. Collier	Smithville	W. Methodist	3	12	12	12	12	12	7	5	2 M & P
80 Joseph Downing	Montreal	Congregationalist	3	12	12	12	12	12	7	5	2
81 J. H. H. H.	"	"	"	12	12	12	12	12	7	5	2
82 J. E. P. P.	Canada	English	1	12	12	"	12	12	7	5	2
83 R. P. P. P.	Windsor	W. Methodist	2	12	12	12	12	12	7	5	2
84 William G. G.	Windsor	W. Methodist	3	12	12	12	12	12	7	5	2
85 William G. G.	Windsor	W. Methodist	3	"	"	"	"	"	7	5	2
86 George F. F.	London	W. Methodist	3	"	"	"	"	"	7	5	2
87 James B. B.	Belleville	Methodist	12	11	11	12	11	11	7	5	2
88 Donald P. P.	Edgar	Presbyterian	3	"	"	"	"	"	7	5	2
89 J. H. H.	Windsor	W. Methodist	3	"	"	"	"	"	7	5	2 M & P
90 J. H. H.	Windsor	W. Methodist	3	12	12	12	12	12	7	5	2 M & P
91 William H. H.	Windsor	W. Methodist	3	12	12	12	12	12	7	5	2
92 J. H. H.	Windsor	W. Methodist	3	12	12	12	12	12	7	5	2
93 J. H. H.	Windsor	W. Methodist	3	12	12	12	12	12	7	5	2
94 William H. H.	Windsor	W. Methodist	3	12	12	12	12	12	7	5	2 M & P
95 W. H. H.	Windsor	W. Methodist	3	12	12	12	12	12	7	5	2
96 J. H. H.	Windsor	W. Methodist	3	12	12	12	12	12	7	5	2

4
36

Session

1863

1864

Name	Residence	Denomination	Year	Anatomy	Physiology	Surgery	Medicine	Midwifery	Surgical Medical	Legal Medicine	Medical Jurisprudence	Practical Anatomy	Pharmacy	Chemistry	Medical Botany	Medical Zoology	Mineralogy	Geology	Registration
1 J. P. Manning	Savoy P.O.	Ch. of Eng.																	N. E. C.
2 Amiel C. C. C.	Frederic	Baptist	3rd				12	12	7		7								2
3 E. B. C. C.	West Hill	Baptist Church	3rd																2
4 E. B. C. C.	Marionton	Baptist	1st	12	12	12	12	12	12	7	7	7	5						2
5 J. P. Manning	Belton	Ch. Church	1st	12	12	12	12	12	12	7	7	7	5						2
6 J. P. Manning	S. Hill	Methodist	1st	12	12	12	12	12	12	7	7	7	5						2
7 W. G. C. C.	Camford	Methodist	1st	12	12	12	12	12	12	7	7	7	5						2
8 W. G. C. C.	York	Ch. of Eng.	1858	12	12	12	12	12	12	7	7	7	5						2
9 W. G. C. C.	Quebec	Methodist	1st	12	12	12	12	12	12	7	7	7	5						2
10 W. G. C. C.	Quebec	Methodist	2nd	12	12	12	12	12	12	7	7	7	5						2
11 J. P. Manning	Cambridge	Ch. Church	1st	12	12	12	12	12	12	7	7	7	5						2
12 J. P. Manning	Frederic	Baptist	1st	12	12	12	12	12	12	7	7	7	5						2
13 W. G. C. C.	Frederic	Ch. of Eng.	3rd	12	12	12	12	12	12	7	7	7	5						2
14 J. P. Manning	Frederic	Ch. of Eng.	1st	12	12	12	12	12	12	7	7	7	5						2
15 W. G. C. C.	Frederic	Methodist	2nd	12	12	12	12	12	12	7	7	7	5						2
16 J. P. Manning	Frederic	Pres.	3rd																2
17 W. G. C. C.	Frederic	Methodist	3rd																2
18 W. G. C. C.	Frederic	Methodist	3rd																2
19 W. G. C. C.	Frederic	Methodist	2nd	12	12	12	12	12	12	7	7	7	5						2
20 W. G. C. C.	Frederic	Methodist	2nd	12	12	12	12	12	12	7	7	7	5						2
21 W. G. C. C.	Frederic	Methodist	3rd																2
22 W. G. C. C.	Frederic	Methodist	1st	12	12	12	12	12	12	7	7	7	5						2
23 W. G. C. C.	Frederic	Methodist	2nd	12	12	12	12	12	12	7	7	7	5						2
24 W. G. C. C.	Frederic	Methodist	3rd	12	12	12	12	12	12	7	7	7	5						2
25 W. G. C. C.	Frederic	Methodist	1st	12	12	12	12	12	12	7	7	7	5						2
26 W. G. C. C.	Frederic	Methodist	1st	12	12	12	12	12	12	7	7	7	5						2
27 W. G. C. C.	Frederic	Methodist	1st	12	12	12	12	12	12	7	7	7	5						2
28 W. G. C. C.	Frederic	Methodist	1st	12	12	12	12	12	12	7	7	7	5						2
29 W. G. C. C.	Frederic	Methodist	1st	12	12	12	12	12	12	7	7	7	5						2
30 W. G. C. C.	Frederic	Methodist	1st	12	12	12	12	12	12	7	7	7	5						2
31 W. G. C. C.	Frederic	Methodist	1st	12	12	12	12	12	12	7	7	7	5						2
32 W. G. C. C.	Frederic	Methodist	1st	12	12	12	12	12	12	7	7	7	5						2
33 W. G. C. C.	Frederic	Methodist	1st	12	12	12	12	12	12	7	7	7	5						2
34 W. G. C. C.	Frederic	Methodist	1st	12	12	12	12	12	12	7	7	7	5						2
35 W. G. C. C.	Frederic	Methodist	1st	12	12	12	12	12	12	7	7	7	5						2
36 W. G. C. C.	Frederic	Methodist	1st	12	12	12	12	12	12	7	7	7	5						2
				23	24	24		23	25	25	26	23	20	24					32
				22	24	24		23	25	25	26	23	20	24					32

35
28
29

1863

1864

Name	Residence	Examination Year	Country	Age	Profession	1864										Registration		
						Madison	Madison	Madison	Surgical	Laboratory	Medical	Dental	Others	Blowers				
57 John Brown	Toledo	W. Methodist	3 ^d														2	M.C.K.
58 William Case	Paris	Baptist	3 ^d														2	
59 W. W. Munn	Jerome	Methodist	3 ^d														2	M.C.K.
60 James Pease	Providence	W. Methodist	3 ^d	12	12	12	12	12	12	12	12	12	12	12	12	12	2	M.C.K.
61 E. H. H. H.	Barric	Ch. England	2 ^d	12	12	12	12	12	12	12	12	12	12	12	12	12	2	
62 John H. H.	East	W. Methodist	3 ^d														2	
63 W. H. H.	Fort	Comm. Presb.	3 ^d														2	
64 W. H. H.	Collingwood	Canadian Presb.	3 ^d	12	12	12	12	12	12	12	12	12	12	12	12	12	2	M.C.K.
65 W. H. H.	Southport	Ch. England	2 ^d	12	12	12	12	12	12	12	12	12	12	12	12	12	2	
66 W. H. H.	Toronto	Methodist	1 st	12	12	12	12	12	12	12	12	12	12	12	12	12	2	
67 J. D. Williams	Cheshire	Ch. England	2 ^d	12	12	12	12	12	12	12	12	12	12	12	12	12	2	
68 Robt. W. H.	Road Head	Ch. England	2	12	12	12	12	12	12	12	12	12	12	12	12	12	2	
69 David A. H.	Seneca	Presbyterian	3	12	12	12	12	12	12	12	12	12	12	12	12	12	2	
70 Archd. H.	St. Thomas	Presbyterian	3	12	12	12	12	12	12	12	12	12	12	12	12	12	2	
71 H. C. H.	Port Hope	W. Methodist	3	12	12	12	12	12	12	12	12	12	12	12	12	12	2	
72 W. H. H.	London	Presb. Methodist	3														2	
73 W. H. H.	Quebec	W. Methodist	2	12	12	12	12	12	12	12	12	12	12	12	12	12	2	
74 V. B. B.	Palermo	Presb. Methodist	2	12	12	12	12	12	12	12	12	12	12	12	12	12	2	
75 Jonathan W.	Hidgley	Baptist	1	12	12	12	12	12	12	12	12	12	12	12	12	12	2	
76 W. H. H.	St. Thomas	Baptist	1	12	12	12	12	12	12	12	12	12	12	12	12	12	2	
77 W. H. H.	Hamilton	Ch. England	1	12	12	12	12	12	12	12	12	12	12	12	12	12	2	
78 Robert A.	St. Thomas	Presbyterian	3														2	
79 W. H. H.	St. Thomas	Presbyterian	1	12	12	12	12	12	12	12	12	12	12	12	12	12	2	
80 W. H. H.	Hamilton	Presbyterian	3	12	12	12	12	12	12	12	12	12	12	12	12	12	2	
81 J. W. H.	Hamilton	Presbyterian	1	12	12	12	12	12	12	12	12	12	12	12	12	12	2	
82 W. H. H.	Hamilton	Presbyterian	1	12	12	12	12	12	12	12	12	12	12	12	12	12	2	
83 W. H. H.	Hamilton	Presbyterian	1	12	12	12	12	12	12	12	12	12	12	12	12	12	2	
84 W. H. H.	Hamilton	Presbyterian	1	12	12	12	12	12	12	12	12	12	12	12	12	12	2	
85 W. H. H.	Hamilton	Presbyterian	1	12	12	12	12	12	12	12	12	12	12	12	12	12	2	
86 W. H. H.	Hamilton	Presbyterian	1	12	12	12	12	12	12	12	12	12	12	12	12	12	2	
87 W. H. H.	Hamilton	Presbyterian	1	12	12	12	12	12	12	12	12	12	12	12	12	12	2	
88 W. H. H.	Hamilton	Presbyterian	1	12	12	12	12	12	12	12	12	12	12	12	12	12	2	
89 W. H. H.	Hamilton	Presbyterian	1	12	12	12	12	12	12	12	12	12	12	12	12	12	2	
90 W. H. H.	Hamilton	Presbyterian	1	12	12	12	12	12	12	12	12	12	12	12	12	12	2	
91 W. H. H.	Hamilton	Presbyterian	1	12	12	12	12	12	12	12	12	12	12	12	12	12	2	
92 W. H. H.	Hamilton	Presbyterian	1	12	12	12	12	12	12	12	12	12	12	12	12	12	2	
93 W. H. H.	Hamilton	Presbyterian	1	12	12	12	12	12	12	12	12	12	12	12	12	12	2	
94 W. H. H.	Hamilton	Presbyterian	1	12	12	12	12	12	12	12	12	12	12	12	12	12	2	
95 W. H. H.	Hamilton	Presbyterian	1	12	12	12	12	12	12	12	12	12	12	12	12	12	2	
96 W. H. H.	Hamilton	Presbyterian	1	12	12	12	12	12	12	12	12	12	12	12	12	12	2	
97 W. H. H.	Hamilton	Presbyterian	1	12	12	12	12	12	12	12	12	12	12	12	12	12	2	
98 W. H. H.	Hamilton	Presbyterian	1	12	12	12	12	12	12	12	12	12	12	12	12	12	2	
99 W. H. H.	Hamilton	Presbyterian	1	12	12	12	12	12	12	12	12	12	12	12	12	12	2	
100 W. H. H.	Hamilton	Presbyterian	1	12	12	12	12	12	12	12	12	12	12	12	12	12	2	

55% 57% 22% 24% 26% 28% 29% 30% 31% 32%

Name	Political	Literature	Gen.	1863			1864							Legislation
				History	Philology	Survey	Medicine	Industry	Mathematics	Chemistry	Surgical	Medical	Natural	
109. G. C.	1	12	12	12	12	12	12	7	7	7	5	2
110 John Armstrong	1											
111 W. H.	48											
			23	26	26		23	25	25	25	26	26	25	32
			25%	25%	26%		26%	26%	25%	25%	25%	26%	25%	33
			27	27	23		25	23	22	22	22	18	29	39
A. J. Lucas, Com. Comitia by Com. - 1864			7%	7%	7%		7 1/2	7 3/4	7 3/4	7 1/4	7 6/4	5 6/4	9 1/4	95
					70		72 1/2	74 1/4	73 1/2	71 1/2	77 1/2	57		

Medical Department Session for 1864-1865

Name	Residence	Denomination	Year	Anatomy	Physiology	Surgery	Medicine	Midwifery	Botany	Chemistry	Zoology	Microsc.	Pathology	Swedish	Anatomy	Residence	
1. J. P. [unclear]	St. Stephen	Chap. of Eng.	1	12	12	12	12	12	12	12	12	12	12	12	12	12	Mt. E. P.
2. A. B. [unclear]	[unclear]	[unclear]	3	12	12	12	12	12	12	12	12	12	12	12	12	12	Mt. E. P.
3. [unclear]	[unclear]	[unclear]	1	12	12	12	12	12	12	12	12	12	12	12	12	12	Mt. E. P.
4. [unclear]	[unclear]	[unclear]	1	12	12	12	12	12	12	12	12	12	12	12	12	12	Mt. E. P.
5. [unclear]	[unclear]	[unclear]	1	12	12	12	12	12	12	12	12	12	12	12	12	12	Mt. E. P.
6. [unclear]	[unclear]	[unclear]	1	12	12	12	12	12	12	12	12	12	12	12	12	12	Mt. E. P.
7. [unclear]	[unclear]	[unclear]	1	12	12	12	12	12	12	12	12	12	12	12	12	12	Mt. E. P.
8. [unclear]	[unclear]	[unclear]	1	12	12	12	12	12	12	12	12	12	12	12	12	12	Mt. E. P.
9. James [unclear]	[unclear]	[unclear]	3														Mt. E. P.
10. [unclear]	[unclear]	[unclear]	3														Mt. E. P.
11. [unclear]	[unclear]	[unclear]	2														Mt. E. P.
12. [unclear]	[unclear]	[unclear]	3														Mt. E. P.
13. [unclear]	[unclear]	[unclear]	1														Mt. E. P.
14. [unclear]	[unclear]	[unclear]	1														Mt. E. P.
15. [unclear]	[unclear]	[unclear]	1														Mt. E. P.
16. [unclear]	[unclear]	[unclear]	1														Mt. E. P.
17. [unclear]	[unclear]	[unclear]	1														Mt. E. P.
18. [unclear]	[unclear]	[unclear]	1														Mt. E. P.
19. [unclear]	[unclear]	[unclear]	1														Mt. E. P.
20. [unclear]	[unclear]	[unclear]	2														Mt. E. P.
21. [unclear]	[unclear]	[unclear]	3														Mt. E. P.
22. [unclear]	[unclear]	[unclear]	3														Mt. E. P.
23. [unclear]	[unclear]	[unclear]	1														Mt. E. P.
24. [unclear]	[unclear]	[unclear]	2														Mt. E. P.
25. [unclear]	[unclear]	[unclear]	1														Mt. E. P.
26. [unclear]	[unclear]	[unclear]	1														Mt. E. P.
27. [unclear]	[unclear]	[unclear]	1														Mt. E. P.
28. [unclear]	[unclear]	[unclear]	3														Mt. E. P.
29. [unclear]	[unclear]	[unclear]	1														Mt. E. P.
30. [unclear]	[unclear]	[unclear]	3														Mt. E. P.
31. [unclear]	[unclear]	[unclear]	3														Mt. E. P.
32. [unclear]	[unclear]	[unclear]	2														Mt. E. P.
33. [unclear]	[unclear]	[unclear]	2														Mt. E. P.
34. [unclear]	[unclear]	[unclear]	2														Mt. E. P.
35. [unclear]	[unclear]	[unclear]	7														Mt. E. P.
36. [unclear]	[unclear]	[unclear]	2														Mt. E. P.
37. [unclear]	[unclear]	[unclear]	25														Mt. E. P.
38. [unclear]	[unclear]	[unclear]	29														Mt. E. P.

Residence

Mt. E. P.

Mt. E. P.

Mt. E. P.

Mt. E. P.

Mt. E. P.

Mt. E. P.

Mt. E. P.

Mt. E. P.

Mt. E. P.

Mt. E. P.

Mt. E. P.

Mt. E. P.

Mt. E. P.

Mt. E. P.

Mt. E. P.

Mt. E. P.

Mt. E. P.

Mt. E. P.

Mt. E. P.

Mt. E. P.

Mt. E. P.

Mt. E. P.

Mt. E. P.

Mt. E. P.

Mt. E. P.

Mt. E. P.

Mt. E. P.

Mt. E. P.

Mt. E. P.

Mt. E. P.

Mt. E. P.

Mt. E. P.

Mt. E. P.

Mt. E. P.

Mt. E. P.

Mt. E. P.

Mt. E. P.

Mt. E. P.

Mt. E. P.

Mt. E. P.

Mt. E. P.

Mt. E. P.

Mt. E. P.

Mt. E. P.

Mt. E. P.

Mt. E. P.

Mt. E. P.

Mt. E. P.

Mt. E. P.

Mt. E. P.

Mt. E. P.

Mt. E. P.

Mt. E. P.

Mt. E. P.

Mt. E. P.

Mt. E. P.

Mt. E. P.

Mt. E. P.

Mt. E. P.

Mt. E. P.

Mt. E. P.

Mt. E. P.

Mt. E. P.

Mt. E. P.

Medical Department

Session for 1864-1865

Name	Residence	Denomination	Year	Anatomy	Physiology	Surgery	Medicine	Obstetrics	Algebra	Chemistry	General Medical Jurisprudence	Practice	Algebra	Registration
37 W. S. Hyland	Wheat	Methodist	1	12	12	12	12	12	7	7	7	5		
38 W. H. Foster	Copiah	Episcopal Church	1	12	12	12	12	12	7	7	7	5		
39 John Barr	Warrenton	Presbyterian	2	12	12	12	12	13	7	7	"	5		
40 W. M. Allen	Barrie	English Meth	3	"	"	"	"	"	"	"	"	5		
41 Joseph D. Smith	Lucasville	Methodist	3	"	"	"	"	"	"	"	"	5		
42 Samuel Moore	Wheat	Presbyterian	2	12	12	12	12	12	7	7	"	5		
43 Charles Jones	Yorkville	E. Church	2	12	12	12	12	12	7	7	"	5		
44 W. H. Taylor	Yorkville	W. Methodist	1	12	12	12	12	12	7	7	"	5		
45 G. A. Johnson	Steffens	W. Methodist	1	12	12	12	12	12	7	7	"	5		M. E. P.
46 C. E. Best	Frygal	Baptist	2	12	12	12	12	12	7	7	"	5		
47 George Cook	Warrenton	Baptist	3	"	"	"	"	"	"	"	"	5		M. E. P.
48 G. A. Fisher	Warrenton	W. Methodist	1	12	12	12	12	12	7	7	7	5		
49 J. M. Johnson	Warrenton	Baptist	2	12	12	12	12	12	7	7	"	5		
50 C. M. Johnson	Warrenton	E. C.	2	12	12	12	12	12	7	7	7	5		
51 Thomas Wiley	Manilla	Congregational	2	12	12	12	12	12	7	7	7	5		
52 Capt. S. H. Wood	Warrenton	Presbyterian	1	12	12	12	12	12	7	7	7	5		
53 J. M. Johnson	Warrenton	W. Methodist	3	"	"	"	"	"	"	"	"	5		
54 W. H. Taylor	Warrenton	W. Methodist	2	12	12	12	12	12	7	7	"	5		
55 Joseph Taylor	Warrenton	Baptist	1	"	"	"	"	"	"	"	"	5		
56 Oct. van Wagoner	Warrenton	W. Methodist	2	12	12	12	12	12	7	7	7	5		
57 Samuel Johnson	Warrenton	Presbyterian	1	12	12	12	12	12	7	7	7	5		
58 A. B. Smith	Little Britain	E. Church	2	12	12	12	12	12	7	7	7	5		
59 J. S. Hughes	Harsham	E. Church	2	12	12	12	12	12	7	7	"	5		
60 T. G. Taylor	Harsham	Congregational	2	12	12	12	12	12	7	7	"	5		
61 J. M. Johnson	Harsham	Baptist	2	12	12	12	12	12	7	7	"	5		
62 J. M. Johnson	Warrenton	W. Methodist	2	12	12	12	12	12	7	7	"	5		
63 J. M. Johnson	Warrenton	W. Methodist	2	12	12	12	12	12	7	7	"	5		
64 J. M. Johnson	Warrenton	W. Methodist	2	12	12	12	12	12	7	7	7	5		
65 J. M. Johnson	Warrenton	W. Methodist	2	12	12	12	12	12	7	7	7	5		
66 J. M. Johnson	Warrenton	W. Methodist	2	12	12	12	12	12	7	7	7	5		
67 J. M. Johnson	Warrenton	W. Methodist	2	12	12	12	12	12	7	7	7	5		
68 J. M. Johnson	Warrenton	W. Methodist	2	12	12	12	12	12	7	7	7	5		
69 J. M. Johnson	Warrenton	W. Methodist	2	12	12	12	12	12	7	7	7	5		
70 J. M. Johnson	Warrenton	W. Methodist	2	12	12	12	12	12	7	7	7	5		
71 J. M. Johnson	Warrenton	W. Methodist	2	12	12	12	12	12	7	7	7	5		
72 J. M. Johnson	Warrenton	W. Methodist	2	12	12	12	12	12	7	7	7	5		
73 J. M. Johnson	Warrenton	W. Methodist	2	12	12	12	12	12	7	7	7	5		
74 J. M. Johnson	Warrenton	W. Methodist	2	12	12	12	12	12	7	7	7	5		
75 J. M. Johnson	Warrenton	W. Methodist	2	12	12	12	12	12	7	7	7	5		
76 J. M. Johnson	Warrenton	W. Methodist	2	12	12	12	12	12	7	7	7	5		
77 J. M. Johnson	Warrenton	W. Methodist	2	12	12	12	12	12	7	7	7	5		
78 J. M. Johnson	Warrenton	W. Methodist	2	12	12	12	12	12	7	7	7	5		
79 J. M. Johnson	Warrenton	W. Methodist	2	12	12	12	12	12	7	7	7	5		
80 J. M. Johnson	Warrenton	W. Methodist	2	12	12	12	12	12	7	7	7	5		
81 J. M. Johnson	Warrenton	W. Methodist	2	12	12	12	12	12	7	7	7	5		
82 J. M. Johnson	Warrenton	W. Methodist	2	12	12	12	12	12	7	7	7	5		
83 J. M. Johnson	Warrenton	W. Methodist	2	12	12	12	12	12	7	7	7	5		
84 J. M. Johnson	Warrenton	W. Methodist	2	12	12	12	12	12	7	7	7	5		
85 J. M. Johnson	Warrenton	W. Methodist	2	12	12	12	12	12	7	7	7	5		
86 J. M. Johnson	Warrenton	W. Methodist	2	12	12	12	12	12	7	7	7	5		
87 J. M. Johnson	Warrenton	W. Methodist	2	12	12	12	12	12	7	7	7	5		
88 J. M. Johnson	Warrenton	W. Methodist	2	12	12	12	12	12	7	7	7	5		
89 J. M. Johnson	Warrenton	W. Methodist	2	12	12	12	12	12	7	7	7	5		
90 J. M. Johnson	Warrenton	W. Methodist	2	12	12	12	12	12	7	7	7	5		
91 J. M. Johnson	Warrenton	W. Methodist	2	12	12	12	12	12	7	7	7	5		
92 J. M. Johnson	Warrenton	W. Methodist	2	12	12	12	12	12	7	7	7	5		
93 J. M. Johnson	Warrenton	W. Methodist	2	12	12	12	12	12	7	7	7	5		
94 J. M. Johnson	Warrenton	W. Methodist	2	12	12	12	12	12	7	7	7	5		
95 J. M. Johnson	Warrenton	W. Methodist	2	12	12	12	12	12	7	7	7	5		
96 J. M. Johnson	Warrenton	W. Methodist	2	12	12	12	12	12	7	7	7	5		
97 J. M. Johnson	Warrenton	W. Methodist	2	12	12	12	12	12	7	7	7	5		
98 J. M. Johnson	Warrenton	W. Methodist	2	12	12	12	12	12	7	7	7	5		
99 J. M. Johnson	Warrenton	W. Methodist	2	12	12	12	12	12	7	7	7	5		
100 J. M. Johnson	Warrenton	W. Methodist	2	12	12	12	12	12	7	7	7	5		

M. E. P.

M. E. P.

M. E. P.

M. E. P.

M. E. P.

M. E. P.

M. E. P.

M. E. P.

M. E. P.

M. E. P.

Medical Department Session for 1864-65

Name	Residence	Diploma	Year	Anatomy			Medical								Class	Registration
				Physiology	Surgery	Medicine	Midwifery	Maternity	Chemistry	General Pathology	Medical Jurisprudence	Pharmacology	Practical Anatomy			
73. James Douglas	London	Ed. of London	1 st	12	12	12	12	12	12	7	7	7	5	2		
74. Samuel Sperry	Ind. Boston	W. Med. Sch.	1 st (9)	12	12	12	12	12	12	7	7	7	5	2		
75. Chas. R. Lincoln	London	Ed. of England	1 st	12	12	12	12	12	12	7	7	7	5	2		
76. Thomas Dwyer	Toronto	Edinburgh	1 st	12	12	12	12	12	12	7	7	7	5	2		
77. John D. Park	Edinburgh	Edinburgh	2 nd	12	12	12	12	12	12	7	7	7	5	2		
78. Arthur G. St.	Toronto	Ed. of England	1 st	12	12	12	12	12	12	7	7	7	5	2		
79. Milton Youmans	Pictou	W. Med. Sch.	2 nd	12	12	12	12	12	12	7	7	7	5	2		
80. Wm. Thompson	Edinburgh	Edinburgh	2 nd	12	12	12	12	12	12	7	7	7	5	2		
81. Geo. W. Wright	Toronto	Edinburgh	1 st	12	12	12	12	12	12	7	7	7	5	2		
82. D. C. McPherson	Boston	Edinburgh	2 nd	12	12	12	12	12	12	7	7	7	5	2		
83. J. W. Adams	Edinburgh	Edinburgh	2 nd	12	12	12	12	12	12	7	7	7	5	2		
84. Wm. H. H. H.	Edinburgh	Edinburgh	3 rd	12	12	12	12	12	12	7	7	7	5	2		
85. Wm. H. H. H.	Edinburgh	Edinburgh	3 rd	12	12	12	12	12	12	7	7	7	5	2		
86. Wm. H. H. H.	Edinburgh	Edinburgh	3 rd	12	12	12	12	12	12	7	7	7	5	2		
87. Wm. H. H. H.	Edinburgh	Edinburgh	3 rd	12	12	12	12	12	12	7	7	7	5	2		
88. Wm. H. H. H.	Edinburgh	Edinburgh	3 rd	12	12	12	12	12	12	7	7	7	5	2		
89. Wm. H. H. H.	Edinburgh	Edinburgh	3 rd	12	12	12	12	12	12	7	7	7	5	2		
90. Wm. H. H. H.	Edinburgh	Edinburgh	3 rd	12	12	12	12	12	12	7	7	7	5	2		
91. Wm. H. H. H.	Edinburgh	Edinburgh	3 rd	12	12	12	12	12	12	7	7	7	5	2		
92. Wm. H. H. H.	Edinburgh	Edinburgh	3 rd	12	12	12	12	12	12	7	7	7	5	2		
93. Wm. H. H. H.	Edinburgh	Edinburgh	3 rd	12	12	12	12	12	12	7	7	7	5	2		
94. Wm. H. H. H.	Edinburgh	Edinburgh	3 rd	12	12	12	12	12	12	7	7	7	5	2		
95. Wm. H. H. H.	Edinburgh	Edinburgh	3 rd	12	12	12	12	12	12	7	7	7	5	2		
96. Wm. H. H. H.	Edinburgh	Edinburgh	3 rd	12	12	12	12	12	12	7	7	7	5	2		
97. Wm. H. H. H.	Edinburgh	Edinburgh	3 rd	12	12	12	12	12	12	7	7	7	5	2		
98. Wm. H. H. H.	Edinburgh	Edinburgh	3 rd	12	12	12	12	12	12	7	7	7	5	2		
99. Wm. H. H. H.	Edinburgh	Edinburgh	3 rd	12	12	12	12	12	12	7	7	7	5	2		
100. Wm. H. H. H.	Edinburgh	Edinburgh	3 rd	12	12	12	12	12	12	7	7	7	5	2		
				20	20	19	14	14	20	20	19	12	21	25		
				29	29	29	29	29	29	30	20	33				
				24	24	24	24	24	24	25	9	32				
				73	73	72	72	72	73	73	41	86				

M. L. H.

University of Victoria College

Medical Department Session 1865-66.

No.	Name	Residence	Religion	Year	Anatomy	Physiology	Surgery	Medicine	Midwifery	Algebra	Chemistry	General Pathology	Medical Jurisprudence	Medical Botany
1	D. McMillan	London	Presbyterian	First										
2	Sam. Calder	London	Methodist	First	12	12	12	12	12	12	7	7	7	5
3	J. J. J. J.	England	Presb.											
4	P. R. Lake	Exeter	C. England	Third	11									M. B. P.
5	J. S. Koffer	London	C. England	Third	13	14	10	12	12	12	7	7		5
6	W. P. Jagger	Leeds	Methodist	Third	14	14	13	12	12	12	7	7		5
7	J. J. J.	London	Methodist	Third										5
8	W. H. H.	London	Methodist	Second	12	12	12	12	12	12	7	7		5
9	R. Stoneham	Barnum	C. England	Second	12	12	12	12	12	12	7	7	7	5
10	W. H. H.	London	Presb.	Second	12	13	13	13	12	12	7	7	7	5
11	W. H. H.	London	English Cl.	First	12	12	12	12	12	12	7	7	7	5
12	J. J. J.	London	Methodist	Second	12	12	12	12	12	12	7	7	7	5
13	C. Newland	London	C. England	Third	12									5
14	Eng. H. H.	London	Methodist	Second	12	12	12	12	12	12	7	7	7	5
15	W. H. H.	London	Methodist	Third	12	12	12	12	12	12	7	7	7	5
16	E. J. J.	London	Methodist	Third										5
17	W. H. H.	London	Methodist	Third			13	12	12					5
18	James Marshall	London	Methodist	First	12	12	12	12	12	12	7	7	7	5
19	W. H. H.	London	Methodist	Third	12	12	12	12	12	12	7	7	7	5
20	Robert Gowans	London	Presbyterian	First	12	12	12	12	12	12	7	7	7	5
21	W. H. H.	London	Methodist	Second	12	12	12	12	12	12	7	7	7	5
22	W. H. H.	London	C. England	First	12	12	12	12	12	12	7	7	7	5
23	W. H. H.	London	Methodist	Second	12	12	12	12	12	12	7	7	7	5
24	W. H. H.	London	Episcopalian	Third										5
25	W. H. H.	London	Methodist	Third	13	12	12	12	12	12	7	7	7	5
26	W. H. H.	London	C. England	First	12	12	12	12	12	12	7	7	7	5
27	John Morrison	London	Presbyterian	Third	12	12	12	12	12	12	7	7	7	5
28	W. H. H.	London	Methodist	Second	12	12	12	12	12	12	7	7	7	5
29	W. H. H.	London	Methodist	Second	12	12	12	12	12	12	7	7	7	5
30	W. H. H.	London	Methodist	Third	12	12	12	12	12	12	7	7	7	5
31	W. H. H.	London	Methodist	Third										5
32	W. H. H.	London	Methodist	Second	12	12	12	12	12	12	7	7	7	5
33	W. H. H.	London	Methodist	First	12	12	12	12	12	12	7	7	7	5
34	W. H. H.	London	Methodist	Second	12	12	12	12	12	12	7	7	7	5
35	W. H. H.	London	Methodist	Third	12	12	12	12	12	12	7	7	7	5
36	W. H. H.	London	Methodist	First	12	12	12	12	12	12	7	7	7	5
37	W. H. H.	London	Methodist	Second	12	12	12	12	12	12	7	7	7	5
38	W. H. H.	London	Methodist	Third	12	12	12	12	12	12	7	7	7	5
39	W. H. H.	London	Methodist	First	12	12	12	12	12	12	7	7	7	5
40	W. H. H.	London	Methodist	Second	12	12	12	12	12	12	7	7	7	5

University of Victoria College.

Name	Residence	Religion	Year	Anatomy	Physiology	Surgery
37. John Barr	Narrabrook	Baptist	3rd	"	"	"
38. Wm. H. Dutton	Narrabrook	Baptist	3rd	"	"	"
39. James H. G. H. H. H.	Knoxfield	W. Methodist	3rd	"	"	"
40. Oscar H. H. H. H.	St. James	Baptist	2nd	12	12	12
41. George H. H. H.	Langford	W. Methodist	3rd	12	12	12
42. John H. H. H.	St. James	Baptist	3rd	"	"	"
43. John H. H. H.	Manilla	Congregational	3rd	"	12	12
44. Geo. B. H. H.	Langford	Baptist	3rd	12	12	12
45. C. S. H. H.	Manilla	Baptist	2nd	12	12	12
46. J. H. H.	Manilla	Methodist	2nd	12	12	12
47. James H. H.	Smithville	Methodist W.	2nd	12	12	12
48. H. H. H.	Langford	Methodist	3rd	"	"	"
49. B. H. H.	Langford	Methodist	2nd	12	12	12
50. M. H. H.	Langford	Methodist	3rd	12	12	12
51. H. H. H.	Langford	Methodist	2nd	12	12	12
52. H. H. H.	Langford	Methodist	3rd	12	12	12
53. H. H. H.	Langford	Methodist	3rd	12	12	12
54. H. H. H.	Langford	Methodist	3rd	12	12	12
55. H. H. H.	Langford	Methodist	3rd	12	12	12
56. H. H. H.	Langford	Methodist	3rd	12	12	12
57. H. H. H.	Langford	Methodist	3rd	12	12	12
58. H. H. H.	Langford	Methodist	3rd	12	12	12
59. H. H. H.	Langford	Methodist	3rd	12	12	12
60. H. H. H.	Langford	Methodist	3rd	12	12	12
61. H. H. H.	Langford	Methodist	3rd	12	12	12
62. H. H. H.	Langford	Methodist	3rd	12	12	12
63. H. H. H.	Langford	Methodist	3rd	12	12	12
64. H. H. H.	Langford	Methodist	3rd	12	12	12
65. H. H. H.	Langford	Methodist	3rd	12	12	12
66. H. H. H.	Langford	Methodist	3rd	12	12	12
67. H. H. H.	Langford	Methodist	3rd	12	12	12
68. H. H. H.	Langford	Methodist	3rd	12	12	12
69. H. H. H.	Langford	Methodist	3rd	12	12	12
70. H. H. H.	Langford	Methodist	3rd	12	12	12

Medical Department. Session 1865-66.

Name	Residence	Religion	Year	Anatomy	Physiology	Surgery	Medical History	Medicine	Chemistry	General	Medical	Antoni
37. John Barr	Narrabrook	Baptist	3rd	"	"	"	"	"	"	"	5	6
38. Wm. H. Dutton	Narrabrook	Baptist	3rd	"	"	"	"	"	"	"	5	6
39. James H. G. H. H.	Knoxfield	W. Methodist	3rd	"	"	"	"	"	"	"	5	6
40. Oscar H. H. H.	St. James	Baptist	2nd	12	12	12	12	12	12	12	7	8
41. George H. H. H.	Langford	W. Methodist	3rd	12	12	12	12	12	12	12	7	8
42. John H. H. H.	St. James	Baptist	3rd	"	"	"	"	"	"	"	5	6
43. John H. H. H.	Manilla	Congregational	3rd	"	12	12	12	12	12	12	7	8
44. Geo. B. H. H.	Langford	Baptist	3rd	12	12	12	12	12	12	12	7	8
45. C. S. H. H.	Manilla	Baptist	2nd	12	12	12	12	12	12	12	7	8
46. J. H. H.	Manilla	Methodist	2nd	12	12	12	12	12	12	12	7	8
47. James H. H.	Smithville	Methodist W.	2nd	12	12	12	12	12	12	12	7	8
48. H. H. H.	Langford	Methodist	3rd	"	"	"	"	"	"	"	5	6
49. B. H. H.	Langford	Methodist	2nd	12	12	12	12	12	12	12	7	8
50. M. H. H.	Langford	Methodist	3rd	12	12	12	12	12	12	12	7	8
51. H. H. H.	Langford	Methodist	2nd	12	12	12	12	12	12	12	7	8
52. H. H. H.	Langford	Methodist	3rd	12	12	12	12	12	12	12	7	8
53. H. H. H.	Langford	Methodist	3rd	12	12	12	12	12	12	12	7	8
54. H. H. H.	Langford	Methodist	3rd	12	12	12	12	12	12	12	7	8
55. H. H. H.	Langford	Methodist	3rd	12	12	12	12	12	12	12	7	8
56. H. H. H.	Langford	Methodist	3rd	12	12	12	12	12	12	12	7	8
57. H. H. H.	Langford	Methodist	3rd	12	12	12	12	12	12	12	7	8
58. H. H. H.	Langford	Methodist	3rd	12	12	12	12	12	12	12	7	8
59. H. H. H.	Langford	Methodist	3rd	12	12	12	12	12	12	12	7	8
60. H. H. H.	Langford	Methodist	3rd	12	12	12	12	12	12	12	7	8
61. H. H. H.	Langford	Methodist	3rd	12	12	12	12	12	12	12	7	8
62. H. H. H.	Langford	Methodist	3rd	12	12	12	12	12	12	12	7	8
63. H. H. H.	Langford	Methodist	3rd	12	12	12	12	12	12	12	7	8
64. H. H. H.	Langford	Methodist	3rd	12	12	12	12	12	12	12	7	8
65. H. H. H.	Langford	Methodist	3rd	12	12	12	12	12	12	12	7	8
66. H. H. H.	Langford	Methodist	3rd	12	12	12	12	12	12	12	7	8
67. H. H. H.	Langford	Methodist	3rd	12	12	12	12	12	12	12	7	8
68. H. H. H.	Langford	Methodist	3rd	12	12	12	12	12	12	12	7	8
69. H. H. H.	Langford	Methodist	3rd	12	12	12	12	12	12	12	7	8
70. H. H. H.	Langford	Methodist	3rd	12	12	12	12	12	12	12	7	8

University of Victoria College

Name	Residence	Religion	Year	Academy	Proficiency	Scoring
27. James Broadbent	Southville	Methodist	Third	"	"	"
38. Miss McLaughlin	Springhill	Episcopal	First	12	12	12
39. J. Kingdon	Colony	Anglican	Third	12	12	12
40. William Russell	West Hill	Pres. Episc.	Third	12	12	12
41. George Johnson	Comox	Wesleyan	Third	12	12	12
42. W. A. Cough	Ball Islet	Church of Eng.	Third	12	12	12
43. Robt. H. G. Galt	Beacons	"	Third	12	12	12
44. C. F. Corry	St. John's	Wesleyan	Third	12	12	12
45. Mr. Thomas	West Hill	Methodist	Third	12	12	12
46. J. S. Hughes	Clanville	Methodist	Third	12	12	12
47. J. J. Galt	West Hill	Methodist	Third	12	12	12
48. Galt	Beacons	Methodist	Third	12	12	12
49. G. A. Buchanan	Comox	Church of Eng.	Third	12	12	12
50. Robert Lamb	Comox	Methodist	Third	"	"	"
51. J. H. Watson	St. John's	Methodist	Third	12	12	12
52. Missa Clancy	Sheshalet	Methodist	Third	"	"	"
53. Frank A. Galt	Beacons	Methodist	Third	12	12	12
54. J. J. Galt	Beacons	Methodist	Third	12	12	12
55. C. G. Galt	Beacons	Methodist	Third	12	12	12
56. Geo. Roddington	Comox	Methodist	Third	"	"	"
57. Mc Marshall	Sheshalet	Methodist	Third	12	12	12
58. J. G. Shaw	Beacons	Methodist	Third	12	12	12
59. J. J. Galt	Beacons	Methodist	Third	12	12	12
60. M. W. Williams	Beacons	Methodist	Third	"	"	"
61. John Galt	Beacons	Methodist	Third	12	12	12
62. Galt	Beacons	Methodist	Third	12	12	12
63. David Galt	Beacons	Methodist	Third	12	12	12
64. J. Galt	Beacons	Methodist	Third	12	12	12
65. J. Galt	Beacons	Methodist	Third	12	12	12
66. J. Galt	Beacons	Methodist	Third	12	12	12
67. J. Galt	Beacons	Methodist	Third	12	12	12
68. J. Galt	Beacons	Methodist	Third	12	12	12
69. J. Galt	Beacons	Methodist	Third	12	12	12
70. J. Galt	Beacons	Methodist	Third	12	12	12
71. J. Galt	Beacons	Methodist	Third	12	12	12

Medical Department

Name	Residence	Religion	Year	Academy	Proficiency	Scoring	Medical	Pharmacy	Midwifery	Physic	Surgey	Other	Remarks
26													
27													
28													
29													
30													
31													
32													
33													
34													
35													
36													
37													
38													
39													
40													
41													
42													
43													
44													
45													
46													
47													
48													
49													
50													
51													
52													
53													
54													
55													
56													
57													
58													
59													
60													
61													
62													
63													
64													
65													
66													
67													
68													
69													
70													
71													
72													

University of Victoria College Medical Department Session 1867-68.

Name	Residence	Religion	Year	Anatomy	Physiology	Surgery	Medicine			Materia Medica	Mental Med.	Chemistry	Botany	Practical Anatomy	Registration	Matriculation and Date of Entry
							Medicine	Medicine	Medicine							
37. Isaac H. Piper	Bathurst	Baptist	First 12	12	12	12	12	12	7	7	6	7	5	5	2	St. E. Place Oct 1 st 68
38. Walter W. Fisher	Orcutt	Methodist	First 12	12	12	12	12	12	7	7	6	7	5	5	2	St. E. Place Oct 1 st 68
39. J. Diamond	Leoville	Ch. of England	Third 12	"	"	"	"	"	"	"	"	"	"	"	2	Oct. 1 st
40. Frank Patton	Leoville	Ch. of Eng.	Second 12	12	12	12	12	12	7	7	6	7	5	5	2	Oct. 1 st
41. Thomas Carter	Victoria	Ch. of England	Third 11	"	"	"	"	"	"	"	5	7	5	5	2	Oct. 1 st
42. Saml B. Gormley	Bellville	Methodist	Third 12	12	12	12	12	12	7	7	6	7	5	5	2	Oct. 1 st
43. John Harris	Halifax	Presbyterian	Second 12	12	12	12	12	12	7	7	6	7	5	5	2	Oct. 1 st
44. Geo. Boston	Lambton	Presbyterian	Second 12	12	12	12	12	12	7	7	6	7	5	5	2	Oct. 1 st
45. Geo. Brown	Victoria	Ch. of England	Second 12	12	12	12	12	12	7	7	6	7	5	5	2	Oct. 1 st
46. Alfred S. Whittier	Kingston	Ch. of England	Third 12	12	12	12	12	12	7	7	6	7	5	5	2	Oct. 1 st
47. Geo. H. Barrett	Leoville	Ch. of England	First 12	12	12	12	12	12	7	7	6	7	5	5	2	Oct. 1 st
48. W. W. Meacham	Nashville	Methodist	First 12	12	12	12	12	12	7	7	6	7	5	5	2	Oct. 1 st
49. J. J. Brown	Marquette	Methodist	Third 13	12	12	12	12	12	7	7	6	7	5	5	2	Oct. 1 st
50. Alfred West	Port Hood	Unitarian	Third 12	12	12	12	12	12	7	7	6	7	5	5	2	Oct. 1 st
51. David J. Hill	Port Hood	Unitarian	Third 12	12	12	12	12	12	7	7	6	7	5	5	2	Oct. 1 st
52. H. Lygon	Banda	Presbyterian	Second 12	12	12	12	12	12	7	7	6	7	5	5	2	Oct. 1 st
53. Geo. H. May	Leoville	Presbyterian	Second 12	12	12	12	12	12	7	7	6	7	5	5	2	Oct. 1 st
54. E. W. White	"	"	First 12	12	12	12	12	12	7	7	6	7	5	5	2	Oct. 1 st
55. Jonathan Bell	Leoville	Methodist	First 12	12	12	12	12	12	7	7	6	7	5	5	2	Oct. 1 st
56. F. Miller	Leoville	Methodist	Second 12	12	12	12	12	12	7	7	6	7	5	5	2	Oct. 1 st
57. C. W. Shaver	Amsterdam	Methodist	Third 12	12	12	12	12	12	7	7	6	7	5	5	2	Oct. 1 st
58. Charles G. White	Leoville	Presbyterian	Third 12	12	12	12	12	12	7	7	6	7	5	5	2	Oct. 1 st
59. James K. Houston	Hamilton	Presbyterian	Second 12	12	12	12	12	12	7	7	6	7	5	5	2	Oct. 1 st
60. George D. Lynch	Ballynora	Methodist	Third 12	12	12	12	12	12	7	7	6	7	5	5	2	Oct. 1 st
61. George Mann	Shalford	Presbyterian	Second 13	13	13	13	13	13	7	7	6	7	5	5	2	Oct. 1 st
62. William Brown	Victoria	Presbyterian	Second 13	13	13	13	13	13	7	7	6	7	5	5	2	Oct. 1 st
63. John Hart	Manilla	Presbyterian	Second 13	13	13	13	13	13	7	7	6	7	5	5	2	Oct. 1 st
64. William Lindsay	Manilla	Methodist	Second 13	13	13	13	13	13	7	7	6	7	5	5	2	Oct. 1 st
65. J. J. Kingston	Leoville	Methodist	Second 13	13	13	13	13	13	7	7	6	7	5	5	2	Oct. 1 st
66. James G. Gray	Leoville	Methodist	Second 13	13	13	13	13	13	7	7	6	7	5	5	2	Oct. 1 st
67. William G. Grant	Leoville	Methodist	Second 12	12	12	12	12	12	7	7	6	7	5	5	2	Oct. 1 st
68. James S. Murray	Victoria	Methodist	Second 12	12	12	12	12	12	7	7	6	7	5	5	2	Oct. 1 st
69. James H. Brown	Leoville	Methodist	Second 12	12	12	12	12	12	7	7	6	7	5	5	2	Oct. 1 st
70. James H. Brown	Leoville	Methodist	Second 12	12	12	12	12	12	7	7	6	7	5	5	2	Oct. 1 st
71. J. B. Nelson	Leoville	Methodist	Second 12	12	12	12	12	12	7	7	6	7	5	5	2	Oct. 1 st
72. J. B. Jewell	Leoville	Methodist	Second 12	12	12	12	12	12	7	7	6	7	5	5	2	Oct. 1 st
				26	25	27	27	27	25	10	26	27	22	21	26	
				28	27	28	28	28	28	10	28	27	22	22	26	

University of Victoria College Medical Department, Session 1867-68.

Name	Residence	Religion	Year	Anatomy	Physiol	Surgery	Medical Department										Matriculation
							Medicine	Midwifery	Medical Pathology	Pharmacology	Chemistry	Obstetrics	Hygiene	Botany	Practical Anatomy	Zoology	
73 G. H. Neal	Penang	English	Second	12	12	12	12	12	12	7	6	7	5	5	2	Oct 9 th 67	
74 J. P. Hall	Windsor	Methodist	Second	12	12	12	12	12	7	6	7	5	5	2	Oct 14 th		
75 H. W. Adams, G. D.	Weymouth	Methodist	First	"	"	"	"	"	"	"	"	"	"	"	Oct 14 th		
76 J. W. Havelly	Stouffville	Methodist	Second	12	12	12	12	12	7	6	7	5	5	2	Oct 14 th		
77 W. H. Hill	Ottawa	English	Second	12	12	12	12	12	7	6	7	5	5	2	Oct 14 th		
78 W. H. Hill	Ottawa	Methodist	Second	"	"	"	"	"	"	"	"	"	"	"	Oct 14 th		
79 Charles Stewart	London	Catholic	First	12	12	12	12	12	7	6	7	5	5	2	Oct 14 th		
80 G. H. Leonard	Ottawa	Methodist	Second	12	12	12	12	12	7	6	7	5	5	2	Oct 14 th		
81 John V. Byers	Fredericton	Episcopal	Third	12	12	12	12	12	7	6	7	5	5	2	Oct 14 th		
82 J. P. Hall	Ottawa	Methodist	Second	10	12	12	12	12	7	6	7	5	5	2	Oct 14 th		
83 Charles L. Tucker	Ottawa	English	First	12	12	12	12	12	7	6	7	5	5	2	Oct 14 th		
84 William C. Graham	Ottawa	Methodist	First	11	12	12	12	12	7	6	7	5	5	2	Oct 14 th		
85 William McLennan	Springville	Episcopal	Second	12	12	12	12	12	7	6	7	5	5	2	Oct 14 th		
86 Chas. J. St. John	Ottawa	Methodist	Second	12	12	12	12	12	7	6	7	5	5	2	Oct 14 th		
87 John R. Hill	Ottawa	Methodist	Second	12	12	12	12	12	7	6	7	5	5	2	Oct 14 th		
88 Wm. P. Atty	Bain	Episcopal	Second	12	12	12	12	12	7	6	7	5	5	2	Oct 14 th		
89 W. J. Spence	Ottawa	Methodist	Second	12	12	12	12	12	7	6	7	5	5	2	Oct 14 th		
90 J. P. Hall	Ottawa	Episcopal	Second	12	12	12	12	12	7	6	7	5	5	2	Oct 14 th		
91 J. P. Hall	Ottawa	Episcopal	Second	12	12	12	12	12	7	6	7	5	5	2	Oct 14 th		
92 Wm. C. Hill	Ottawa	Episcopal	Second	12	12	12	12	12	7	6	7	5	5	2	Oct 14 th		
93 Wm. C. Hill	Ottawa	Episcopal	Second	12	12	12	12	12	7	6	7	5	5	2	Oct 14 th		
94 J. P. Hall	Ottawa	Episcopal	Second	12	12	12	12	12	7	6	7	5	5	2	Oct 14 th		
95 J. P. Hall	Ottawa	Episcopal	Second	12	12	12	12	12	7	6	7	5	5	2	Oct 14 th		
96 J. P. Hall	Ottawa	Episcopal	Second	12	12	12	12	12	7	6	7	5	5	2	Oct 14 th		
97 R. R. Boncher	Ottawa	Episcopal	Second	12	12	12	12	12	7	6	7	5	5	2	Oct 14 th		
98 J. P. Hill	Ottawa	Episcopal	Second	12	12	12	12	12	7	6	7	5	5	2	Oct 14 th		
99 James P. Hill	Ottawa	Episcopal	Second	12	12	12	12	12	7	6	7	5	5	2	Oct 14 th		
100 Wm. C. Hill	Ottawa	Episcopal	Second	12	12	12	12	12	7	6	7	5	5	2	Oct 14 th		
101 J. C. Hill	Ottawa	Episcopal	Second	12	12	12	12	12	7	6	7	5	5	2	Oct 14 th		
102 Wm. C. Hill	Ottawa	Episcopal	Second	12	12	12	12	12	7	6	7	5	5	2	Oct 14 th		
103 J. P. Hill	Ottawa	Episcopal	Second	12	12	12	12	12	7	6	7	5	5	2	Oct 14 th		
104 J. P. Hill	Ottawa	Episcopal	Second	12	12	12	12	12	7	6	7	5	5	2	Oct 14 th		
105 J. P. Hill	Ottawa	Episcopal	Second	12	12	12	12	12	7	6	7	5	5	2	Oct 14 th		
106 J. P. Hill	Ottawa	Episcopal	Second	12	12	12	12	12	7	6	7	5	5	2	Oct 14 th		
107 J. P. Hill	Ottawa	Episcopal	Second	12	12	12	12	12	7	6	7	5	5	2	Oct 14 th		
108 J. P. Hill	Ottawa	Episcopal	Second	12	12	12	12	12	7	6	7	5	5	2	Oct 14 th		
109 J. P. Hill	Ottawa	Episcopal	Second	12	12	12	12	12	7	6	7	5	5	2	Oct 14 th		
110 J. P. Hill	Ottawa	Episcopal	Second	12	12	12	12	12	7	6	7	5	5	2	Oct 14 th		
111 J. P. Hill	Ottawa	Episcopal	Second	12	12	12	12	12	7	6	7	5	5	2	Oct 14 th		
112 J. P. Hill	Ottawa	Episcopal	Second	12	12	12	12	12	7	6	7	5	5	2	Oct 14 th		
113 J. P. Hill	Ottawa	Episcopal	Second	12	12	12	12	12	7	6	7	5	5	2	Oct 14 th		
114 J. P. Hill	Ottawa	Episcopal	Second	12	12	12	12	12	7	6	7	5	5	2	Oct 14 th		
115 J. P. Hill	Ottawa	Episcopal	Second	12	12	12	12	12	7	6	7	5	5	2	Oct 14 th		
116 J. P. Hill	Ottawa	Episcopal	Second	12	12	12	12	12	7	6	7	5	5	2	Oct 14 th		
117 J. P. Hill	Ottawa	Episcopal	Second	12	12	12	12	12	7	6	7	5	5	2	Oct 14 th		
118 J. P. Hill	Ottawa	Episcopal	Second	12	12	12	12	12	7	6	7	5	5	2	Oct 14 th		
119 J. P. Hill	Ottawa	Episcopal	Second	12	12	12	12	12	7	6	7	5	5	2	Oct 14 th		
120 J. P. Hill	Ottawa	Episcopal	Second	12	12	12	12	12	7	6	7	5	5	2	Oct 14 th		

University of Victoria College Medical Department, Session 1867-68.

Name	Residence	Religion	Year	Anatomy	Physiol.	Surgery	Treatment				Anatomy	Practical	Mentation	Mentation
							Medicine	Materia Medica	Medicine	Medicine				
173 G. H. Neal	Fingal	English	Second	12	12	12	12	12	7	6	7	5	2	Oct 1st
174 J. Hall	Winnipeg	Methodist	Second	12	12	12	12	12	7	6	7	5	2	Oct 1st
175 Mrs. Wm. M. B.	Agasson	Methodist	First	"	"	"	"	"	"	"	"	"	"	Oct 1st
176 John Hardy	Stouffville	Methodist	Second	12	12	12	12	12	7	6	7	5	2	Oct 1st
177 W. W. Hill	O. Morris	English	Second	12	12	12	12	12	7	6	7	5	2	Oct 1st
178 William S. Brown	Prants	W. Methodist	Second	"	"	"	"	"	"	"	"	"	"	Oct 1st
179 Charles Stewart	Stouffville	Methodist	Second	12	12	12	12	12	7	6	7	5	2	Oct 1st
180 G. H. Cameron	Nedra	W. Methodist	Second	12	12	12	12	12	7	6	7	5	2	Oct 1st
181 John H. Byers	Greenland	English	Second	12	12	12	12	12	7	6	7	5	2	Oct 1st
182 J. Campbell	Paris	Methodist	First	12	12	12	12	12	7	6	7	5	2	Oct 1st
183 Charles R. Cook	Stouffville	English	Second	12	12	12	12	12	7	6	7	5	2	Oct 1st
184 William A. Hughes	Oranien	Methodist	Second	12	12	12	12	12	7	6	7	5	2	Oct 1st
185 William McNamee	Springville	Methodist	Second	12	12	12	12	12	7	6	7	5	2	Oct 1st
186 Charles J. Cook	Paris	Methodist	Second	12	12	12	12	12	7	6	7	5	2	Oct 1st
187 John Raine	Stouffville	Methodist	Second	12	12	12	12	12	7	6	7	5	2	Oct 1st
188 Frank Oddy	Paris	Ch of Eng	First	12	12	12	12	12	7	6	7	5	2	Oct 1st
189 J. G. Spaulding	Stouffville	W. Methodist	Second	12	12	12	12	12	7	6	7	5	2	Oct 1st
190 Paul A. Spaulding	Stouffville	Episcopal	Second	12	12	12	12	12	7	6	7	5	2	Oct 1st
191 W. G. Lloyd	Stouffville	Ch of Eng	Third	12	12	12	12	12	7	6	7	5	2	Oct 1st
192 Walter Macleod	Stouffville	Ch of Eng	Third	"	"	"	"	"	"	"	"	"	"	Oct 1st
193 Geo. S. Williams	Stouffville	Ch of Eng	Third	12	12	12	12	12	7	6	7	5	2	Oct 1st
194 J. G. Spaulding	Stouffville	W. Methodist	Second	12	12	12	12	12	7	6	7	5	2	Oct 1st
195 J. G. Spaulding	Stouffville	W. Methodist	Second	12	12	12	12	12	7	6	7	5	2	Oct 1st
196 J. G. Spaulding	Stouffville	W. Methodist	Second	12	12	12	12	12	7	6	7	5	2	Oct 1st
197 R. R. Boncher	Stouffville	Episcopal	Second	12	12	12	12	12	7	6	7	5	2	Oct 1st
198 Sam. Taylor	Stouffville	Methodist	Second	12	12	12	12	12	7	6	7	5	2	Oct 1st
199 James P. Gordon	Newcastle	W. Methodist	First	12	12	12	12	12	7	6	7	5	2	Oct 1st
200 William Owen	Stouffville	Methodist	Second	12	12	12	12	12	7	6	7	5	2	Oct 1st
201 W. C. Gordon	Stouffville	Methodist	Second	12	12	12	12	12	7	6	7	5	2	Oct 1st
202 Alvan Crawford	Stouffville	Methodist	First	12	12	12	12	12	7	6	7	5	2	Oct 1st
203 Charles W. Henry	Stouffville	English	Second	12	12	12	12	12	7	6	7	5	2	Oct 1st
204 Geo. Mathews	Stouffville	Methodist	Second	12	12	12	12	12	7	6	7	5	2	Oct 1st
205 A. Burnham	Stouffville	Methodist	Second	12	12	12	12	12	7	6	7	5	2	Oct 1st
206 G. Gordon	Stouffville	Methodist	Second	12	12	12	12	12	7	6	7	5	2	Oct 1st
207 G. Gordon	Stouffville	Methodist	Second	12	12	12	12	12	7	6	7	5	2	Oct 1st
208 G. Gordon	Stouffville	Methodist	Second	12	12	12	12	12	7	6	7	5	2	Oct 1st

University of Victoria College Medical Department Session 1867-68

Name	Residence	Religion	Year	Anatomy	Physiology	Surgery	Subjects						Cheministry	Anatomy	Pathol. Anatomy	Registration		
							Medical	Med. Hist.	Med. Juris	Medical Pathology	Medical Jurisprudence	Medicine						
109	Geo. H. Brighton	Bye Mount	Methodist	Second	12	12	12	12	12	12	12	12	12	12	12	12	12	Oct 16 th
110	W. H. Spencer	Town	Church of Eng.	Third	12	12	12	12	12	12	12	12	12	12	12	12	12	Oct 18 th
111	J. H. D. Stewart	Edinburgh	Church of Eng.	Second	12	12	12	12	12	12	12	12	12	12	12	12	12	Oct. 18 th
112	Wm. Macleod	Fort St. James	Presbyterian	Third	12	12	12	12	12	12	12	12	12	12	12	12	12	Oct 18 th
113	George Stewart	Gold Springs	Congregational	Second	12	12	12	12	12	12	12	12	12	12	12	12	12	Oct 19 th
114	Calvin Leitch	Galt	Presbyterian	Third	12	12	12	12	12	12	12	12	12	12	12	12	12	Oct 19 th
115	Alex. Webster	Victoria	Presbyterian	Third	12	12	12	12	12	12	12	12	12	12	12	12	12	Oct 19 th
116	Edual George	Quilpe H. C.	Ch. of Eng.	Third	12	12	12	12	12	12	12	12	12	12	12	12	12	Oct 15 th
117	J. Langford	Victoria	Ch. of Eng.	Second	12	12	12	12	12	12	12	12	12	12	12	12	12	Oct 15 th
118	John Colin Campbell	Town	Presbyterian	Second	12	12	12	12	12	12	12	12	12	12	12	12	12	Oct 15 th
119	J. Aldrich	Hill	Presbyterian	Second	12	12	12	12	12	12	12	12	12	12	12	12	12	Oct 15 th
120	Dr. Ferguson	Victoria	Presbyterian	Second	12	12	12	12	12	12	12	12	12	12	12	12	12	Oct 15 th
121	Dr. McLaughlin	Fort St. James	Methodist	Third	12	12	12	12	12	12	12	12	12	12	12	12	12	Oct 15 th
122	J. H. Stewart	Edinburgh	Presbyterian	Third	12	12	12	12	12	12	12	12	12	12	12	12	12	Oct 15 th
123	John G. Stewart	Victoria	Presbyterian	Third	12	12	12	12	12	12	12	12	12	12	12	12	12	Oct 15 th
124	Chas. Black	Inverness	Ch. of Eng.	Third	12	12	12	12	12	12	12	12	12	12	12	12	12	Oct 15 th
125	William McEwan	Victoria	Presbyterian	Third	12	12	12	12	12	12	12	12	12	12	12	12	12	Oct 15 th
126	Frank Gray	Victoria	Ch. of Eng.	Third	12	12	12	12	12	12	12	12	12	12	12	12	12	Oct 15 th
127	Edmund Gray	Victoria	Ch. of Eng.	Third	12	12	12	12	12	12	12	12	12	12	12	12	12	Oct 15 th
128	John Macleod	Victoria	Ch. of Eng.	Third	12	12	12	12	12	12	12	12	12	12	12	12	12	Oct 15 th
129	John Macleod	Victoria	Ch. of Eng.	Third	12	12	12	12	12	12	12	12	12	12	12	12	12	Oct 15 th
130	J. F. Cochrane	Victoria	Ch. of Eng.	Third	12	12	12	12	12	12	12	12	12	12	12	12	12	Oct 15 th
131	John Fulton	Victoria	Presbyterian	Third	12	12	12	12	12	12	12	12	12	12	12	12	12	Oct 15 th
132	John Macleod	Victoria	Ch. of Eng.	Third	12	12	12	12	12	12	12	12	12	12	12	12	12	Oct 15 th
133	Richard Morris	Victoria	Ch. of Eng.	Third	12	12	12	12	12	12	12	12	12	12	12	12	12	Oct 15 th
134	A. H. Macleod	Victoria	Ch. of Eng.	Third	12	12	12	12	12	12	12	12	12	12	12	12	12	Oct 15 th
135	A. H. Macleod	Victoria	Ch. of Eng.	Third	12	12	12	12	12	12	12	12	12	12	12	12	12	Oct 15 th
136	Thomas Shaw	Victoria	Methodist	Third	12	12	12	12	12	12	12	12	12	12	12	12	12	Oct 15 th
137	Edmund Gray	Victoria	Ch. of Eng.	Third	12	12	12	12	12	12	12	12	12	12	12	12	12	Oct 15 th
138	John Macleod	Victoria	Ch. of Eng.	Third	12	12	12	12	12	12	12	12	12	12	12	12	12	Oct 15 th
139	John Macleod	Victoria	Ch. of Eng.	Third	12	12	12	12	12	12	12	12	12	12	12	12	12	Oct 15 th
140	John Macleod	Victoria	Ch. of Eng.	Third	12	12	12	12	12	12	12	12	12	12	12	12	12	Oct 15 th
141	John Macleod	Victoria	Ch. of Eng.	Third	12	12	12	12	12	12	12	12	12	12	12	12	12	Oct 15 th
142	John Macleod	Victoria	Ch. of Eng.	Third	12	12	12	12	12	12	12	12	12	12	12	12	12	Oct 15 th
143	John Macleod	Victoria	Ch. of Eng.	Third	12	12	12	12	12	12	12	12	12	12	12	12	12	Oct 15 th
144	John Macleod	Victoria	Ch. of Eng.	Third	12	12	12	12	12	12	12	12	12	12	12	12	12	Oct 15 th
145	John Macleod	Victoria	Ch. of Eng.	Third	12	12	12	12	12	12	12	12	12	12	12	12	12	Oct 15 th
146	John Macleod	Victoria	Ch. of Eng.	Third	12	12	12	12	12	12	12	12	12	12	12	12	12	Oct 15 th
147	John Macleod	Victoria	Ch. of Eng.	Third	12	12	12	12	12	12	12	12	12	12	12	12	12	Oct 15 th
148	John Macleod	Victoria	Ch. of Eng.	Third	12	12	12	12	12	12	12	12	12	12	12	12	12	Oct 15 th
149	John Macleod	Victoria	Ch. of Eng.	Third	12	12	12	12	12	12	12	12	12	12	12	12	12	Oct 15 th
150	John Macleod	Victoria	Ch. of Eng.	Third	12	12	12	12	12	12	12	12	12	12	12	12	12	Oct 15 th

University of Victoria College Medical Department Session 1868-69

Name	Residence	Religion	Year	Anatomy	Physiology	Surgery	Medicin	Midwifery	Medical History	Medical Jurisprudence	Clinics	Attendance	Practical	Final	Remarks
57 Walter Thompson	Ypokoille	Methodist	1st	12	12	12	12	12	12	12	6	75	5	2	Oct. Feb.
58 J. H. Murray	Holstein	Presbyterian	3rd	"	"	"	"	"	"	"	"	"	5	2	"
59 J. M. L. G. G. G.	British Head	Methodist	3rd	12	12	12	12	12	12	12	6	75	5	2	"
60 J. H. M. G. G.	Portland	Methodist	1st	12	12	12	12	12	12	12	6	75	5	2	"
61 Robert D. Brest	Strachway	Methodist	1st	12	12	12	12	12	12	12	6	75	5	2	Oct. 1st
62 J. H. M. G. G.	Woodstock	Presb. int.	1st	12	12	12	12	12	12	12	6	75	5	2	Oct. 1st
63 J. H. M. G. G.	Kenwick	"	1st	12	12	12	12	12	12	12	6	75	5	2	Oct. 1st
64 C. S. Murray	Toronto	Catholic	2nd	12	12	12	12	12	12	12	6	75	5	2	M. S. Oct 1st
65 W. H. M. G. G.	Portville	English Ch.	3rd	12	12	12	12	12	12	12	6	75	5	2	Oct. 1st
66 Jas. M. M. G. G.	Beaumont	"	3rd	"	"	"	"	"	"	"	"	"	5	2	Oct. 1st
67 W. H. M. G. G.	Bond Wood	Methodist	3rd	"	"	"	"	"	"	"	"	"	5	2	Oct. 1st
68 G. H. M. G. G.	Kenwick	Christian	3rd	"	"	"	"	"	"	"	"	"	5	2	Oct. 1st
69 James Jamison	Newcastle	Ch. of Eng.	1st	12	12	12	12	12	12	12	6	75	5	2	Oct. 1st
70 Wm. H. M. G. G.	Kellicott	Presbyterian	1st	12	12	12	12	12	12	12	6	75	5	2	Oct. 1st
71 Wm. M. G. G.	Lewis	Presbyterian	3rd	"	"	"	"	"	"	"	"	"	5	2	Oct. 1st
72 J. H. M. G. G.	Pelton	"	2nd	12	12	12	12	12	12	12	6	75	5	2	Oct. 1st
73 J. H. M. G. G.	Niagara	Ch. of England	2nd	12	12	12	12	12	12	12	6	75	5	2	Oct. 1st
74 J. H. M. G. G.	Pelton	Presbyterian	3rd	"	"	"	"	"	"	"	"	"	5	2	Oct. 1st
75 J. H. M. G. G.	Pelton	"	1st	12	12	12	12	12	12	12	6	75	5	2	Oct. 1st
76 J. H. M. G. G.	Port Head	Presbyterian	3rd	12	12	12	12	12	12	12	6	75	5	2	Oct. 1st
77 J. H. M. G. G.	Pelton	Methodist	3rd	"	"	"	"	"	"	"	"	"	5	2	Oct. 1st
78 J. H. M. G. G.	Chatham	R. Catholic	2nd	12	12	12	12	12	12	12	6	75	5	2	Oct. 1st
79 J. H. M. G. G.	Kingal	English Ch.	3rd	"	"	"	"	"	"	"	"	"	5	2	Oct. 1st
80 J. H. M. G. G.	Kingal	English Ch.	2nd	12	12	12	12	12	12	12	6	75	5	2	Oct. 1st
81 J. H. M. G. G.	Kingal	Presbyterian	1st	12	12	12	12	12	12	12	6	75	5	2	Oct. 1st
82 J. H. M. G. G.	Kingal	Methodist	3rd	"	"	"	"	"	"	"	"	"	5	2	Oct. 1st
83 J. H. M. G. G.	Strabane	Presbyterian	1st	12	12	12	12	12	12	12	6	75	5	2	Oct. 1st
84 J. H. M. G. G.	Langford	Methodist	3rd	12	12	12	12	12	12	12	6	75	5	2	Oct. 1st
85 J. H. M. G. G.	Langford	Presbyterian	1st	12	12	12	12	12	12	12	6	75	5	2	Oct. 1st
86 J. H. M. G. G.	Langford	Methodist	3rd	12	12	12	12	12	12	12	6	75	5	2	Oct. 1st
87 J. H. M. G. G.	Langford	Presbyterian	1st	12	12	12	12	12	12	12	6	75	5	2	Oct. 1st
88 J. H. M. G. G.	Langford	Methodist	3rd	12	12	12	12	12	12	12	6	75	5	2	Oct. 1st
89 J. H. M. G. G.	Langford	Presbyterian	1st	12	12	12	12	12	12	12	6	75	5	2	Oct. 1st
90 J. H. M. G. G.	Langford	Methodist	3rd	12	12	12	12	12	12	12	6	75	5	2	Oct. 1st
91 J. H. M. G. G.	Langford	Presbyterian	1st	12	12	12	12	12	12	12	6	75	5	2	Oct. 1st
92 J. H. M. G. G.	Langford	Methodist	3rd	12	12	12	12	12	12	12	6	75	5	2	Oct. 1st
93 J. H. M. G. G.	Langford	Presbyterian	1st	12	12	12	12	12	12	12	6	75	5	2	Oct. 1st
94 J. H. M. G. G.	Langford	Methodist	3rd	12	12	12	12	12	12	12	6	75	5	2	Oct. 1st
95 J. H. M. G. G.	Langford	Presbyterian	1st	12	12	12	12	12	12	12	6	75	5	2	Oct. 1st
96 J. H. M. G. G.	Langford	Methodist	3rd	12	12	12	12	12	12	12	6	75	5	2	Oct. 1st
97 J. H. M. G. G.	Langford	Presbyterian	1st	12	12	12	12	12	12	12	6	75	5	2	Oct. 1st
98 J. H. M. G. G.	Langford	Methodist	3rd	12	12	12	12	12	12	12	6	75	5	2	Oct. 1st
99 J. H. M. G. G.	Langford	Presbyterian	1st	12	12	12	12	12	12	12	6	75	5	2	Oct. 1st
100 J. H. M. G. G.	Langford	Methodist	3rd	12	12	12	12	12	12	12	6	75	5	2	Oct. 1st

University of Victoria College Medical				Department Session 1868-69														
Name	Residence	Religion	Year	Anatomy	Physiology	Surgery	Medicine	Nidwifery	Midwifery	Obstetrics	Diagnosis	Pharmacology	Chemistry	Hygiene	Public Health	Sanitation	Hygiene	
109	W. H. H. H.	Methodist	1 st	12	12	12	12	12	7	7	6	7	5	5	2	2	2	2
110	John Carroll	St Catharine	Methodist	1 st	12	12	12	12	7	7	6	7	5	5	2	2	2	2
111	William Holmes	English	1 st	12	12	11	12	12	7	7	6	7	5	5	2	2	2	2
112	Campbell	Methodist	1 st	12	12	12	12	12	7	7	6	7	5	5	2	2	2	2
113	David Butler	Methodist	2 nd	12	12	12	12	12	7	7	6	7	5	5	2	2	2	2
114	George Stewart	Methodist	3 rd	12	12	12	12	12	7	7	6	7	5	5	2	2	2	2
115	Thomas Corbridge	Methodist	1 st	12	12	12	12	12	7	7	6	7	5	5	2	2	2	2
116	Edwin Smith	Methodist	1 st	12	12	12	12	12	7	7	6	7	5	5	2	2	2	2
117	W. H. H.	Methodist	3 rd	12	12	12	12	12	7	7	6	7	5	5	2	2	2	2
118	W. H. H.	Methodist	3 rd	12	12	12	12	12	7	7	6	7	5	5	2	2	2	2
119	W. H. H.	Methodist	3 rd	12	12	12	12	12	7	7	6	7	5	5	2	2	2	2
120	W. H. H.	Methodist	3 rd	12	12	12	12	12	7	7	6	7	5	5	2	2	2	2
121	W. H. H.	Methodist	3 rd	12	12	12	12	12	7	7	6	7	5	5	2	2	2	2
122	W. H. H.	Methodist	3 rd	12	12	12	12	12	7	7	6	7	5	5	2	2	2	2
123	W. H. H.	Methodist	3 rd	12	12	12	12	12	7	7	6	7	5	5	2	2	2	2
124	W. H. H.	Methodist	3 rd	12	12	12	12	12	7	7	6	7	5	5	2	2	2	2
125	W. H. H.	Methodist	3 rd	12	12	12	12	12	7	7	6	7	5	5	2	2	2	2
126	W. H. H.	Methodist	3 rd	12	12	12	12	12	7	7	6	7	5	5	2	2	2	2
127	W. H. H.	Methodist	3 rd	12	12	12	12	12	7	7	6	7	5	5	2	2	2	2
128	W. H. H.	Methodist	3 rd	12	12	12	12	12	7	7	6	7	5	5	2	2	2	2
129	W. H. H.	Methodist	3 rd	12	12	12	12	12	7	7	6	7	5	5	2	2	2	2
130	W. H. H.	Methodist	3 rd	12	12	12	12	12	7	7	6	7	5	5	2	2	2	2
131	W. H. H.	Methodist	3 rd	12	12	12	12	12	7	7	6	7	5	5	2	2	2	2
132	W. H. H.	Methodist	3 rd	12	12	12	12	12	7	7	6	7	5	5	2	2	2	2
133	W. H. H.	Methodist	3 rd	12	12	12	12	12	7	7	6	7	5	5	2	2	2	2
134	W. H. H.	Methodist	3 rd	12	12	12	12	12	7	7	6	7	5	5	2	2	2	2
135	W. H. H.	Methodist	3 rd	12	12	12	12	12	7	7	6	7	5	5	2	2	2	2

1st Oct. 3rd
 2nd Oct. 5th
 3rd Oct. 12th
 4th Oct. 15th
 5th Oct. 17th
 6th Oct. 18th
 7th Oct. 19th
 8th Oct. 20th
 9th Oct. 21st
 10th Oct. 22nd
 11th Oct. 23rd
 12th Oct. 24th
 13th Oct. 25th
 14th Oct. 26th
 15th Oct. 27th
 16th Oct. 28th
 17th Oct. 29th
 18th Oct. 30th
 19th Oct. 31st

M. E. P. 1869

University of Victoria College Medical Department Session 1869-1870

No.	Name	Residence	Religion	Year	Anatomy	Physiology	Surgery	Medicine	Industry	Hygiene	Pharmacology	Chemistry	Medical Jurisprudence	Practical
1.	Alan Crawford	Portville	Methodist	3.	"	"	"	"	"	"	"	"	"	"
2.	Geo. W. Craig	Orangevale	"	3	"	"	"	"	"	"	"	"	"	2
3.	John J. Crutcher	Wheatfield	Episcopal	2	12	17	12	12	12	12	8	12	"	12 2
4.	Joseph H. Day	Millbrook	Unitarian	3 1 st	12	17	12	12	12	12	8	12	"	12 2
5.	Wm. Deane	Barrow	"	1	12	17	12	12	12	12	8	12	7	12 2
6.	Joseph Bennett	Woodhead	"	11	"	"	"	"	"	"	8	6	"	5 2
7.	John Bennett	London	Methodist	1	12	17	12	12	12	12	8	12	7	12 2
8.	John Burton	Wick	Episcopal	2	12	17	12	12	12	12	8	12	"	12 2
9.	Charles Burgess	Wick	Methodist	2	12	17	12	12	12	12	8	12	"	12 2
10.	John C. C. C.	Wick	Methodist	1	12	17	12	12	12	12	8	12	"	12 2
11.	John C. C.	Wick	Methodist	1	12	17	12	12	12	12	8	12	"	12 2
12.	John C. C.	Wick	Methodist	1	12	17	12	12	12	12	8	12	"	12 2
13.	John C. C.	Wick	Methodist	1	12	17	12	12	12	12	8	12	"	12 2
14.	John C. C.	Wick	Methodist	1	12	17	12	12	12	12	8	12	"	12 2
15.	John C. C.	Wick	Methodist	2 nd	12	17	12	12	12	12	8	12	7	12 2
16.	John C. C.	Wick	Methodist	1	12	17	12	12	12	12	8	12	"	12 2
17.	John C. C.	Wick	Methodist	2 nd	12	17	12	12	12	12	8	12	"	12 2
18.	John C. C.	Wick	Methodist	2 nd	12	17	12	12	12	12	8	12	"	12 2
19.	John C. C.	Wick	Methodist	2	12	17	12	12	12	12	8	12	"	12 2
20.	John C. C.	Wick	Methodist	2 nd	12	17	12	12	12	12	8	12	"	12 2
21.	John C. C.	Wick	Methodist	2 nd	12	17	12	12	12	12	8	12	"	12 2
22.	John C. C.	Wick	Methodist	3 rd	"	"	"	"	"	"	8	5	"	2
23.	John C. C.	Wick	Methodist	1	12	17	12	12	12	12	8	12	"	12 2
24.	John C. C.	Wick	Methodist	1	12	17	12	12	12	12	8	12	"	12 2
25.	John C. C.	Wick	Methodist	1	12	17	12	12	12	12	8	12	"	12 2
26.	John C. C.	Wick	Methodist	2 nd	12	17	12	12	12	12	8	12	7	12 2
27.	John C. C.	Wick	Methodist	3 rd	"	"	"	"	"	"	8	5	"	2
28.	John C. C.	Wick	Methodist	4 th	12	17	12	12	12	12	8	12	7	12 2
29.	John C. C.	Wick	Methodist	1 st	12	17	12	12	12	12	8	12	"	12 2
30.	John C. C.	Wick	Methodist	3 rd	"	"	"	"	"	"	8	5	"	2
31.	John C. C.	Wick	Methodist	4 th	12	17	12	12	12	12	8	12	7	12 2
32.	John C. C.	Wick	Methodist	3	"	"	"	"	"	"	8	5	"	2
33.	John C. C.	Wick	Methodist	2 nd	12	17	12	12	12	12	8	12	"	12 2
34.	John C. C.	Wick	Methodist	1 st	12	17	12	12	12	12	8	12	"	12 2
35.	John C. C.	Wick	Methodist	2 nd	12	17	12	12	12	12	8	12	"	12 2
36.	John C. C.	Wick	Methodist	1 st	12	17	12	12	12	12	8	12	7	12 2
				28	28	28	24	23	27	34	28	10	23	12 24

Name	Residence	Religion	Year	History	Predecessor	Medicine	Midwifery	Phy. Sur.	Ch. Surgery	Med. Juris	Chir. Curis	Botany	Distinction
32. Mrs. Gardner	Orma O.	Meth. dist.	2 nd 10										
38. Tho. Lewis	Bellefonte, Pa.	Ch. of England	1 st Jan. 12	12	12		12						M.B.L.
41. W. H. Roberts	Lebanon	Ch. of England	3 rd 12										
42. Geo. M. Harris	Madagascar	Ch. of England	3 rd 12										
44. W. H. Cairns	Fort St. George	Ch. of England	3 rd 12										
46. Wm. H. H. H. H.	London	Baptist	3 rd 12										
48. James Wood	London	Presbyterian	1 st 12	12	12								
49. C. J. Farrell	London	Ch. of England	2 nd 12	12	12								
50. C. L. L. L.	London	Ch. of England	2 nd 12	12	12								
51. C. L. L. L.	London	Ch. of England	2 nd 12	12	12								
52. C. L. L. L.	London	Ch. of England	2 nd 12	12	12								
53. C. L. L. L.	London	Ch. of England	2 nd 12	12	12								
54. C. L. L. L.	London	Ch. of England	2 nd 12	12	12								
55. C. L. L. L.	London	Ch. of England	2 nd 12	12	12								
56. C. L. L. L.	London	Ch. of England	2 nd 12	12	12								
57. C. L. L. L.	London	Ch. of England	2 nd 12	12	12								
58. C. L. L. L.	London	Ch. of England	2 nd 12	12	12								
59. C. L. L. L.	London	Ch. of England	2 nd 12	12	12								
60. C. L. L. L.	London	Ch. of England	2 nd 12	12	12								
61. C. L. L. L.	London	Ch. of England	2 nd 12	12	12								
62. C. L. L. L.	London	Ch. of England	2 nd 12	12	12								
63. C. L. L. L.	London	Ch. of England	2 nd 12	12	12								
64. C. L. L. L.	London	Ch. of England	2 nd 12	12	12								
65. C. L. L. L.	London	Ch. of England	2 nd 12	12	12								
66. C. L. L. L.	London	Ch. of England	2 nd 12	12	12								
67. C. L. L. L.	London	Ch. of England	2 nd 12	12	12								
68. C. L. L. L.	London	Ch. of England	2 nd 12	12	12								
69. C. L. L. L.	London	Ch. of England	2 nd 12	12	12								
70. C. L. L. L.	London	Ch. of England	2 nd 12	12	12								
71. C. L. L. L.	London	Ch. of England	2 nd 12	12	12								
72. C. L. L. L.	London	Ch. of England	2 nd 12	12	12								
73. C. L. L. L.	London	Ch. of England	2 nd 12	12	12								
74. C. L. L. L.	London	Ch. of England	2 nd 12	12	12								
75. C. L. L. L.	London	Ch. of England	2 nd 12	12	12								
76. C. L. L. L.	London	Ch. of England	2 nd 12	12	12								
77. C. L. L. L.	London	Ch. of England	2 nd 12	12	12								
78. C. L. L. L.	London	Ch. of England	2 nd 12	12	12								
79. C. L. L. L.	London	Ch. of England	2 nd 12	12	12								
80. C. L. L. L.	London	Ch. of England	2 nd 12	12	12								
81. C. L. L. L.	London	Ch. of England	2 nd 12	12	12								
82. C. L. L. L.	London	Ch. of England	2 nd 12	12	12								
83. C. L. L. L.	London	Ch. of England	2 nd 12	12	12								
84. C. L. L. L.	London	Ch. of England	2 nd 12	12	12								
85. C. L. L. L.	London	Ch. of England	2 nd 12	12	12								
86. C. L. L. L.	London	Ch. of England	2 nd 12	12	12								
87. C. L. L. L.	London	Ch. of England	2 nd 12	12	12								
88. C. L. L. L.	London	Ch. of England	2 nd 12	12	12								
89. C. L. L. L.	London	Ch. of England	2 nd 12	12	12								
90. C. L. L. L.	London	Ch. of England	2 nd 12	12	12								
91. C. L. L. L.	London	Ch. of England	2 nd 12	12	12								
92. C. L. L. L.	London	Ch. of England	2 nd 12	12	12								
93. C. L. L. L.	London	Ch. of England	2 nd 12	12	12								
94. C. L. L. L.	London	Ch. of England	2 nd 12	12	12								
95. C. L. L. L.	London	Ch. of England	2 nd 12	12	12								
96. C. L. L. L.	London	Ch. of England	2 nd 12	12	12								
97. C. L. L. L.	London	Ch. of England	2 nd 12	12	12								
98. C. L. L. L.	London	Ch. of England	2 nd 12	12	12								
99. C. L. L. L.	London	Ch. of England	2 nd 12	12	12								
100. C. L. L. L.	London	Ch. of England	2 nd 12	12	12								

M.B.L.

+

x

x

x

x

x

x

Name	Residence	Religion	Year	Anatomy	Physic	Surgery	Medicine	Midwifery	Botanic	Chemistry	Pharmacology	Elementary	Polity	Other
78. J. K. Butterfield	Bradford	Unitarian	2nd	12	17	12	12	12	12	12	12	12	12	12
79. H. L. Bailey	Altham	Church of England	2nd	12	17	12	12	12	12	12	12	12	12	12
75. Benjamin Abbott	Altham	Methodist												
76. Alex. McLaren	Toronto	Presbyterian	1st	17			12		XX	8	12			2
77. W. Green	Altham	Methodist	1st	12	17	12	12	12	12	12	12	12	12	3.1
78. E. J. Cox	Altham	Anglican	2nd	12	17	12	12	12	12	12	12	12	12	12
79. A. W. Brown	Altham	Methodist	3	XX	XX	12	12	12	12	12	12	12	12	3.2
80. S. H. G. G. G.	Altham	Anglican	3							8	8			2
81. H. Johnson	Altham	Anglican	3rd							8	8			2
82. W. Mitchell	Altham	Anglican	2nd	X	X	12	12	12	12	12	12	12	12	2
83. G. W. G. G.	Altham	Anglican	3											2
84. J. G. G. G.	Altham	Anglican	3							8	8			2
85. J. G. G. G.	Altham	Church of England	2	12	17	12	12	12	12	12	12	12	12	2
86. J. G. G. G.	Altham	Church of England	2	12	17	12	12	12	12	12	12	12	12	2
87. J. G. G. G.	Altham	Church of England	2	12	17	12	12	12	12	12	12	12	12	2
88. J. G. G. G.	Altham	Church of England	3	12	17	12	12	12	12	12	12	12	12	2
89. J. G. G. G.	Altham	Church of England	1	12	17	12	12	12	12	12	12	12	12	2
90. J. G. G. G.	Altham	Church of England	1	12	17	12	12	12	12	12	12	12	12	2
91. J. G. G. G.	Altham	Church of England	3											2
92. J. G. G. G.	Altham	Church of England	4	12	17	12	12	12	12	12	12	12	12	2
93. J. G. G. G.	Altham	Church of England	1	12	17	12	12	12	12	12	12	12	12	2
94. J. G. G. G.	Altham	Church of England	1	12	17	12	12	12	12	12	12	12	12	2
95. J. G. G. G.	Altham	Church of England	1	12	17	12	12	12	12	12	12	12	12	2
96. J. G. G. G.	Altham	Church of England	4							8	8			2
97. J. G. G. G.	Altham	Church of England	5							8	8			2
98. J. G. G. G.	Altham	Church of England	2	12	17	12	12	12	12	12	12	12	12	2
99. J. G. G. G.	Altham	Church of England	X	X	X	X	X	X	X	X	X	X	X	2
100. J. G. G. G.	Altham	Church of England	1	12	17	12	12	12	12	12	12	12	12	2
101. J. G. G. G.	Altham	Church of England	2	12	17	12	12	12	12	12	12	12	12	2
102. J. G. G. G.	Altham	Church of England	1	12	17	12	12	12	12	12	12	12	12	2
103. J. G. G. G.	Altham	Church of England	1	12	17	12	12	12	12	12	12	12	12	2
104. J. G. G. G.	Altham	Church of England	18	18	17	12	12	12	12	12	12	12	12	2
105. J. G. G. G.	Altham	Church of England	23	23	23	23	23	23	23	23	23	23	23	2
106. J. G. G. G.	Altham	Church of England	23	22	21	21	21	21	21	21	21	21	21	2
107. J. G. G. G.	Altham	Church of England	23	22	21	21	21	21	21	21	21	21	21	2
108. J. G. G. G.	Altham	Church of England	64	63	61	61	61	61	61	61	61	61	61	2

Grand Total

M. G. L.

M. G. P.

University of Victoria College.

Medical Department (Session 1870-71)

67
68
69
70
71
72
73
74
75
76
77
78
79
80
81
82
83
84
85
86
87
88
89
90
91
92

Students	Residence	Religion	Year	Anatomy	Physiology	Surgery	Medicine	Botany	Chemistry	Med. Jur.	Phyl.	Pathology	Pharmacology	Registration
74	Hoggs Island	Roman Catholic	Proctorian											
75	W. K. Smith	Montreal	Methodist											
76	R. W. Cullough	Tiffin	Presbyterian	12	17		8	12	12					2 Paid
77	Chas. Orchard	Toronto	Rm											2 Paid
78	Law													2 Paid
79	W. S. Smith	Brentford												Noted in 77

W. S. Smith Glasgow

University of Victoria College

Students Names	Residence	Religion	Year	
-------------------	-----------	----------	------	--

Medical Department Session 1872-73

1	J. M. Donald	Danforth	Methodist	2 nd Year	Full Course
2	W. McClellan	Maplewood	Methodist	1 st Year	Full Course
3	Francis Wilson	Fort St. James	Episcopalian	1 st Year	Full Course
4	W. Imminger	Millford	Pres. Meth.	1 st Year	Full Course
5	Peter McLean	Strathcona	Episcopalian	2 nd Year	Full Course
6	W. McCullough	Strathcona	Episcopalian	1 st Year	
7	P. Atkinson	Strathcona	Methodist	1 st Year	
8	L. Beck	Langford	Anglican	3 rd Year	Full Course
9	J. G. Gable	Esquimalt	Catholic	1 st Year	Full Course
10	W. Cook	Wellesley	Methodist	1 st Year	
11	J. G. Gable	Esquimalt	Catholic	2 nd Year	Full Course
12	W. G. Gable	Esquimalt	Catholic	2 nd Year	Full Course
13	W. G. Gable	Esquimalt	Catholic	2 nd Year	Full Course
14	W. G. Gable	Esquimalt	Catholic	2 nd Year	Full Course
15	E. Boulter	Strathcona	Methodist	1 st Year	
16	R. Kennedy	Strathcona	Methodist	1 st Year	Full Course
17	D. J. McDonald	Strathcona	Methodist	2 nd Year	Full Course
18	J. M. Donald	Strathcona	Methodist	2 nd Year	
19	A. G. Douglas	Strathcona	Methodist	2 nd Year	Primary Course
20	A. G. Douglas	Strathcona	Methodist	2 nd Year	
21	W. McClellan	Strathcona	Methodist	2 nd Year	Full Course
22	John McMillan	Strathcona	Baptist	2 nd Year	Full Course
23	William Gray	Strathcona	Baptist	1 st Year	Primary
24	George Kesteven	Strathcona	Baptist	1 st Year	Primary
25					
26					
27					
28					
29					
30					
31					
32	W. G. Gable	Esquimalt	Catholic	2 nd Year	
33	C. H. Gable	Esquimalt	Catholic	2 nd Year	
34	E. G. Gable	Esquimalt	Catholic	2 nd Year	
35	A. G. Gable	Esquimalt	Catholic	2 nd Year	
36	J. G. Gable	Esquimalt	Catholic	2 nd Year	

Registration

Paid - \$2.00
Paid - \$5

Paid \$1.00
Paid \$5.00
Paid 5.00

Medicals University of Victoria Collg

No	Name	Residence	Religion	Year
1	A. Salomon	Marathon	Baptist	1st
2	Wm J. Strongway	Penwick	Methodist	1st
3	H. Minns	Halford	Free Meth	2nd
4	William Gray	Chatham	Free German	2nd
5	John Douglas	Leam	W. Methodist	
6	W. Hood	Ovland	W.M.	2 nd
7	Peter McLean	Memphra	Presbyterian	2 nd
8	John Cowfoot	Essex	Ep. Catholic	3 rd
9	Thomas Elder	Ammanthwaite	Ep. Cath	2 nd
10	D. J. McDonald	Waggon	Presbyterian	3 rd
11	W. McCallough	Leam	W.M.	3 rd
12	C. P. Kerney	Toronto	U. Church	2 nd
13	John Kirkpatrick	Godsich	Episcopalian	2 nd
14	Joseph Lewis	Victoria Square	W. Meth	1 st
15	George Baptie	Toronto	Presbyterian	
16	Richard Moon	Pointe-aux-Lacs	Methodist	3 rd Full course
17	James Smith	Clayton	Methodist	1 st
18	J. S. Atkinson	Hamilton	W. Methodist	2 nd
19	J. H. Munton	Toronto	Methodist	3 rd
20	W. H. Banbury	Toronto	Ch. of Engl.	1 st
21	Charles J. Jones	Brampton	W. Methodist	1 st
22	J. J. Smith	Ammanville	Ep. Cath	1 st
23	John C. Boulter	Waukegan	Methodist	2 nd Full course
24	John M. McPherson	Bellevue	Baptist	3 rd
25	John A. Ireland	Amherst	Presby. Union	2 nd Hall course
26	W. D. Brett	Halford	Methodist	3 rd Free course
27	J. McNeill	Lemora	Methodist	1 st Full course
28	W. H. McNeill			
29	E. B. Grant			
30	H. Edworthy	Bella Poon	Ep. Catholic	4 th Full course
31	M. B. Mallory	Nabance	Ch. of England	Master's Medicine & Chemistry
32	W. H. Martin	Essex	Methodist	Master's Medicine & Chemistry
33	Chas. Block	Essex	Ch. of England	2 nd yr.
34	W. G. Caldwell	Brampton	Methodist	3 rd yr. Final course
35	John	Essex		
36	J. Lewis	Essex		
37	A. C. Graham	Essex		

Medical Department Sussex 1863-74

No	Name	Residence	Religion	Year
1	A. Salomon	Marathon	Baptist	1st
2	Wm J. Strongway	Penwick	Methodist	1st
3	H. Minns	Halford	Free Meth	2nd
4	William Gray	Chatham	Free German	2nd
5	John Douglas	Leam	W. Methodist	
6	W. Hood	Ovland	W.M.	2 nd
7	Peter McLean	Memphra	Presbyterian	2 nd
8	John Cowfoot	Essex	Ep. Catholic	3 rd
9	Thomas Elder	Ammanthwaite	Ep. Cath	2 nd
10	D. J. McDonald	Waggon	Presbyterian	3 rd
11	W. McCallough	Leam	W.M.	3 rd
12	C. P. Kerney	Toronto	U. Church	2 nd
13	John Kirkpatrick	Godsich	Episcopalian	2 nd
14	Joseph Lewis	Victoria Square	W. Meth	1 st
15	George Baptie	Toronto	Presbyterian	
16	Richard Moon	Pointe-aux-Lacs	Methodist	3 rd Full course
17	James Smith	Clayton	Methodist	1 st
18	J. S. Atkinson	Hamilton	W. Methodist	2 nd
19	J. H. Munton	Toronto	Methodist	3 rd
20	W. H. Banbury	Toronto	Ch. of Engl.	1 st
21	Charles J. Jones	Brampton	W. Methodist	1 st
22	J. J. Smith	Ammanville	Ep. Cath	1 st
23	John C. Boulter	Waukegan	Methodist	2 nd Full course
24	John M. McPherson	Bellevue	Baptist	3 rd
25	John A. Ireland	Amherst	Presby. Union	2 nd Hall course
26	W. D. Brett	Halford	Methodist	3 rd Free course
27	J. McNeill	Lemora	Methodist	1 st Full course
28	W. H. McNeill			
29	E. B. Grant			
30	H. Edworthy	Bella Poon	Ep. Catholic	4 th Full course
31	M. B. Mallory	Nabance	Ch. of England	Master's Medicine & Chemistry
32	W. H. Martin	Essex	Methodist	Master's Medicine & Chemistry
33	Chas. Block	Essex	Ch. of England	2 nd yr.
34	W. G. Caldwell	Brampton	Methodist	3 rd yr. Final course
35	John	Essex		
36	J. Lewis	Essex		
37	A. C. Graham	Essex		

High school

Paid 5.00

Paid 3.00

University of Victoria B.C.

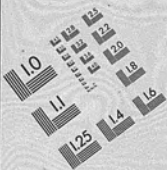
Medical Department Session

74-75

Registration

18	John S. Wilson	Windsor	1st
19	H. Grimshaw	Millgrove	Methodist 3rd
20	J. Alfred Noble	Millgrove	Methodist 1st
21	David Jamieson	St. Forest	C. Presbyterian 1st
22	James D.	5th
23	James D.	Methodist 2nd
24	William	Methodist 1st
25	A. H. Salomon	Esquimalt	Presbyterian 1st
26	A. King	...	Unitarian 3rd
27	W. H. Thompson	Strawberry	Methodist 2nd
28	W. H. Clapp	...	Ch. M. 1st
29	Prof. J. Duggan	...	Pres. Ch. 1st
30	James B. Smith	Langford	Methodist 2nd
31	W. H. Clapp	...	Ch. of Eng. 2nd
32	3rd
33	2nd
34	2nd
35	2nd
36	3rd
37	Walter J. Burns	Brampton	Methodist 2nd
38	3rd
39	W. S. Cook	Willand	3rd
40	2nd
41	1st
42	1st
43	J. C. Rowden	Hamburg	3rd
44	3rd
45	George Deptic	Levan	2nd
46	C. McKeegan	...	3rd
47	James H.	Methodist 1st
48	1st
49	1st

Paid \$500
Paid \$500



Association for Information and Image Management

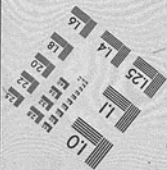
1100 Wayne Avenue, Suite 1100
Silver Spring, Maryland 20901
301-587-8002



Centimeter



Inches



MANUFACTURED TO AIM STANDARDS
BY APPLIED IMAGE, INC.



10
FREE
16
FREE
5 mm
12
11
10
FREE

END OF
TITLE