

VICTORIA UNIVERSITY  
(TORONTO, ONT.)  
REGISTRAR'S OFFICE

SERIES 2: STUDENT  
RECORDS

SUBSERIES 2: ARTS  
RECORDS

89.137V 10S-1

ALPHABETICAL REGISTER  
OF STUDENTS  
1902-1906

CERTIFICATE OF AUTHENTICITY

THIS IS TO CERTIFY THAT THE MICROPHOTOGRAPHIC IMAGES APPEARING ON THIS ROLL OF MICROFILM ARE ACCURATE AND COMPLETE RECORDS OF MATERIAL DELIVERED TO XEBEC, AND WERE MICROFILMED IN THE REGULAR COURSE OF BUSINESS PURSUANT TO ESTABLISHED ROUTINE POLICY FOR THE MAINTENANCE AND PRESERVATION OF SUCH RECORDS THROUGH THE STORAGE OF SUCH MICROFILMS IN PROTECTED LOCATIONS.

IT IS FURTHER CERTIFIED THAT THE PHOTOGRAPHIC PROCESSES USED FOR MICROFILMING THE ABOVE RECORDS WERE ACCOMPLISHED IN A MANNER AND ON MICROFILM WHICH MEETS THE RECOMMENDED REQUIREMENTS OF THE STANDARDS FOR PERMANENT MICROPHOTOGRAPHIC REPRODUCTIONS.

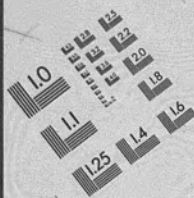
~~87437V~~ 87437V 105-1  
ITEM

13x  
REDUCTION RATIO

MAR. 10 198  
DATED MICROFILMED

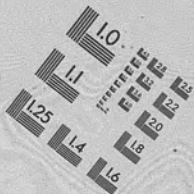
Barbara Chubb  
CAMERA OPERATOR

XEBEC IMAGING SERVICES INC.  
CONCORD, ONTARIO, CANADA



AIM

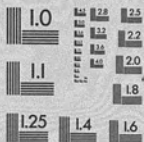
Association for Information and Image Management  
1102 Wayne Avenue, Suite 1100  
Silver Spring, Maryland 20910  
301/587-8202



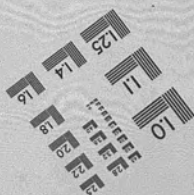
Centimeter



Inches



MANUFACTURED TO AIM STANDARDS  
BY APPLIED IMAGE, INC.



67.1374  
vol. 1

A  
B

A  
B

NAME.	ADDRESS.	Amount.	First Instalment.	Second Instalment.	Third Instalment.	TOTAL.
Burwash, Geo W	Monte	500	6cp.	7yly	Apr. 17 1891.	Sept 1891
Krieger, Q <sup>r</sup>		250			Nov 1 91	
Clément, H. H. P.		1000			1 91	
Dewart, Geo D.		500			Oct. 31 91	
Ludger, J. H.		3000			Mar. 1 92	
Ferman, Geo D.		100			Nov. 1 91	
Stephen Anna, Et Co.	New York.	500	5cp.	7y.	Apr. 17 92	
Lake, Geo John W.		1000	6.	7.	Jan 1 92	
Lanceley, Geo E.		500			Oct. 1 91	
Johnston, D <sup>r</sup>	Washington D.	200			3 91	
Potte, D <sup>r</sup>	Monte	500			Apr. 1 91	
St. John, J. W.		500			Nov. 1 91	
Withers, Geo D.		500			Apr. 1 91	
Hammill, J. J.		500			Nov. 1 91	
Clément, G. V.	Shiraz	200			9 91	
Kand, A. E.	New Westmunde	2000	5.	4yly	Aug. 1 92	
DeKock, H. L.		500	6.		1 92	
Latham, Peter		100				
White, A. E.		200			4 92	
Robson, Geo. E.		200			1 92	
D.	New Westmunde	250			1 92	
Pero, Alex	Paid	500			1 92	
Coatham, H. E.		500			1 92	
Curtis, D. S.		500			1 92	
Wintemute, Jas. L.		200			1 92	
Howard		22500				

NAME.	ADDRESS.	Amount.	First Instalment.	Second Instalment.	Third Instalment.	TOTAL.
Juleau, J. E.	New Westmunde	\$22500				1st instalment
Halls, A. C.	Chilliwack	200	6cp.	4yly	June 1 93	
Boswell, Geo W.		300			Aug 5 92	
Gillanders, A. F.		300			1 92	
Potte, Geo John		100			1 92	
White, Geo John		100			Sept. 1 91	
Whitland, R. H.		100			Aug 5 92	
Hall, Jas.		300			1 92	
Richardson, D <sup>r</sup> Masley, Vancouver		100			1 92	
Nicoll, Edos		6			1 92	
Green, Geo A. E.		1000			1 92	
Gardner, J. E.		100			1 92	
White, Geo H.		300			1 92	
MacLellan, A. J.	Victoria	1000			1 92	
Hoopner, Thos.		500			1 92	
Laganby, Miss E.		100			1 92	
Milson, Geo C.		100			1 92	
Sturmer, H.		20				
Barr, Geo H. W.		100			May 15 92	
Brook, A. E.	Vancouver	100			Aug 12 92	
Glaselle, John D.	Langray	300			Oct. 26 92	
Sadler, Thos.		300				
Bruwster, W. S.	Knarbyrd.	200	7.	May	1 92	
Coleman, D <sup>r</sup> A. P.	Monte	300	7.	4yly	Jan 1 93	
Keenleyside, A.	London.	100	6.		Dec. 1 92	
Jaffray, Robt	Monte	1000	7.	Jan	1 92	
Leid		29526				

NAME.	ADDRESS.	Amount.	First Instalment.	Second Instalment.	Third Instalment.	TOTAL.
W. Parrish, D. G.	Toronto	29526				First payment
Wilson, Geo.	Port Hope	400	6/92	7/92	July 15 92	
Amos, A. E.	Toronto	100			7/92	Jan. 1923
Matthews, Mrs. C.	Hamilton	500	5			2/93
Griffin, D. H. D.		1000	5		May 6 93	
Kyerson, A. D.	Toronto	200	6		Apr. 193	
Scaris, Col. R.	London	500		7/2	May 11 93	
Cop. S. C.	Toronto	100	6			25 93
McParade, H. H.		2000			July 193	
Ellis, John D.		300			Apr. 15 93	
Daly, J. W.	London	200			7/93	Mar 194
Daly, A. J.	Simcoe	1000	5/93	7/93	Sep. 11 93	
Maam, W. E.	Toronto	300			7/93	Dec. 193
Harren, H. A.		50	6		Sep. 193	
Wilson, Chas. J.	Pictou	200	6		Nov. 193	
James, C. L.	Toronto	1000	11/2		Apr. 29 93	
Davis, E. J. M. P. King		100	6		Nov. 193	
Stone, Mrs. D.		300	6	7/2	Oct. 20 94	
		50	6		7/94	Apr. 20 94
		37726				
West. Can. Tel. Co. Less		500				
		37226				
Lancely, Mrs. J. K.		75	6		June 1 94	
Matthews, Mrs. C. Less		37301				
		1000				
		36301				

NAME.	ADDRESS.	Amount.	First Instalment.	Second Instalment.	Third Instalment.	TOTAL.
Steward		36,301				
Less W. Daly		1,000				
Less J. C. Cox		35,301				
		2,000				
		33,301				
		100				
		33,201				
		500				
" A. Peers Paid		500				
		32,701				
Less Lancely		500				
Johnson		300				
Ellis		100				
Walton		700				
		900				
		31,801				

A.

1902-3.

NAME.	ADDRESS.	Amount.	First Instalment.	Second Instalment.	Third Instalment.	TOTAL.
Hilton Miss Ethel	87 Glen Road	8 <sup>00</sup>	8 <sup>00</sup>	—	Spec	8 <sup>00</sup>
Adams J. H.	1 St. Thomas St	36 <sup>00</sup>	18 <sup>00</sup>	18 <sup>00</sup>	I	36 <sup>00</sup>
Archibald G. A.	273 St. George St	36 <sup>00</sup>	36 <sup>00</sup>	—	I	36 <sup>00</sup>
Allen Miss M. B.	144 Yorkville Lane Wilmington	36 <sup>00</sup>	18 <sup>00</sup>	18 <sup>00</sup>	III	36 <sup>00</sup>
Anderson R. J.	Asplen West	36 <sup>00</sup>	31 <sup>00</sup>	—	III	31 <sup>00</sup>
Allen W. H.	114 Yorkville Lane Wilmington	20 <sup>00</sup>	Home Conf	—	—	20 <sup>00</sup>
Armstrong H. C.	54 Hayden St Ottawa, Ontario	20 <sup>00</sup>	Home	—	—	20 <sup>00</sup>

1903-1904

Armstrong H. C.	Shawville, Ont. 50 Greenville Cornwall	refund of \$22.00	18 <sup>00</sup>	18 <sup>00</sup>	I	36 <sup>00</sup>
Adams John H.	1 St. Thomas St Wilmington	36 <sup>00</sup>	18 <sup>00</sup>	18 <sup>00</sup>	II	36 <sup>00</sup>
Allen Miss M. B.	144 Yorkville Lane Wilmington	36 <sup>00</sup>	18 <sup>00</sup>	18 <sup>00</sup>	IV	36 <sup>00</sup>
Archibald G. A.	273 St. George St Cornwall	36 <sup>00</sup>	18 <sup>00</sup>	18 <sup>00</sup>	II	36 <sup>00</sup>
Austin Barnaby	124 Bedford St Wilmington	5 <sup>00</sup>	5 <sup>00</sup>	—	Spec	5 <sup>00</sup>
Allen W. H.	54 Hayden St Worship	20 <sup>00</sup>	Home Conf	—	—	20 <sup>00</sup>
Archer W. H.	58 1/2 Church	20 <sup>00</sup>	—	—	—	20 <sup>00</sup>
Albertson W. B.	Castville	20 <sup>00</sup>	Home Bld.	—	—	20 <sup>00</sup>
Ashcraft Miss M.	33 Beaton St	18 <sup>00</sup>	18 <sup>00</sup>	—	I	18 <sup>00</sup>

1904-1905

NAME.	ADDRESS.	Amount.	First Instalment.	Second Instalment.	Third Instalment.	TOTAL.
Albertson W. B.	Castville 50 Hayden St	20 <sup>00</sup>	Home Conf	—	—	20 <sup>00</sup>
Brown J. W.	Bolton Shawville Lane	36 <sup>00</sup>	36 <sup>00</sup>	—	I	36 <sup>00</sup>
Armstrong J. H.	18 Hayden	36 <sup>00</sup>	18 <sup>00</sup>	18 <sup>00</sup>	II	36 <sup>00</sup>
Adams J. H.	7 St. Thomas	36 <sup>00</sup>	18 <sup>00</sup>	18 <sup>00</sup>	III	36 <sup>00</sup>
Ashcraft Miss M.	33 Beaton St	36 <sup>00</sup>	18 <sup>00</sup>	18 <sup>00</sup>	III	36 <sup>00</sup>
Adams Miss M. B.	45 Egan St. Shawville	1 <sup>00</sup>	—	—	—	1 <sup>00</sup>
Albright Fred.	Shawville	36 <sup>00</sup>	5 <sup>00</sup>	18 <sup>00</sup>	I	23 <sup>00</sup>
Archibald G. A.	273 St. George St	36 <sup>00</sup>	36 <sup>00</sup>	—	I	36 <sup>00</sup>
G. A.		23 <sup>00</sup>	28 <sup>00</sup>	—	III	23 <sup>00</sup>

1905-6

Albertson, W. B.	Castville 48 Hayden	20 <sup>00</sup>	Manitoba Con.	—	—	—
Allen G. S.	67 Glenview Shawville	18 <sup>00</sup>	18 <sup>00</sup>	—	I	18 <sup>00</sup>
Archibald, G. A.	273 St. George Shawville, Ont.	5 <sup>00</sup>	5 <sup>00</sup>	—	II	5 <sup>00</sup>
Armstrong, J. H.	48 Hayden	36 <sup>00</sup>	10 <sup>00</sup>	8 <sup>00</sup>	III	36 <sup>00</sup>
Ashall Miss M.	33 Beaton St	36 <sup>00</sup>	18 <sup>00</sup>	13 <sup>00</sup>	II	31 <sup>00</sup>
Adams John H.	1 St. Thomas	36 <sup>00</sup>	18 <sup>00</sup>	18 <sup>00</sup>	IV	36 <sup>00</sup>
Adams Ed. W.	1 St. Thomas	36 <sup>00</sup>	18 <sup>00</sup>	18 <sup>00</sup>	I	36 <sup>00</sup>
Archibald, G. A.	273 St. George 45 Egan St.	36 <sup>00</sup>	18 <sup>00</sup>	18 <sup>00</sup>	II	36 <sup>00</sup>
Albright, F. S.	Shawville	36 <sup>00</sup>	18 <sup>00</sup>	18 <sup>00</sup>	—	36 <sup>00</sup>
Allison Miss A. H.	16 Ryker Bolton	5 <sup>00</sup>	5 <sup>00</sup>	—	I	5 <sup>00</sup>
Arnot James H.	146 Cumberland, Bolton	36 <sup>00</sup>	18 <sup>00</sup>	18 <sup>00</sup>	I	36 <sup>00</sup>
Adams Miss M. B.	Shawville	—	—	—	—	1 <sup>00</sup>

1906-7

NAME. ADDRESS. Amount. First Instalment. Second Instalment. Third Instalment. TOTAL.

1907-8

NAME. ADDRESS. Amount. First Instalment. Second Instalment. Third Instalment. TOTAL.



13

1902-3.

NAME.	ADDRESS.	Amount.	First Instalment.	Second Instalment.	Third Instalment.	TOTAL.
Bull Miss Helen	63 Rose Ave	5 <sup>00</sup>	5 <sup>00</sup>	—	Spec	5 <sup>00</sup>
Bugs W. H.	Chesley	36 <sup>00</sup>	18 <sup>00</sup>	18 <sup>00</sup>	I	36 <sup>00</sup>
Bennett John P.	26 St Mary St	36 <sup>00</sup>	18 <sup>00</sup>	18 <sup>00</sup>	II	36 <sup>00</sup>
Bowman J. C.	103 Kaylton Ave London	36 <sup>00</sup>	—	—	I Schdp	36 <sup>00</sup>
Bristol Miss M.	591 Church St Ottawa	36 <sup>00</sup>	18 <sup>00</sup>	18 <sup>00</sup>	IV	36 <sup>00</sup>
Ball E. E.	Lansing	36 <sup>00</sup>	18 <sup>00</sup>	18 <sup>00</sup>	I	36 <sup>00</sup>
Bonnick Miss M.	613 James	5 <sup>00</sup>	5 <sup>00</sup>	—	Spec	5 <sup>00</sup>
Baxter Miss M.	4111 Markham 16 Waitland	36 <sup>00</sup>	36 <sup>00</sup>	—	III	36 <sup>00</sup>
Bishop Chas. W.	62 St George St Parry Sound	18 <sup>00</sup>	18 <sup>00</sup>	—	III	18 <sup>00</sup>
Bentley Rose V.	550 Church St Brantford	36 <sup>00</sup>	18 <sup>00</sup>	18 <sup>00</sup>	IV	36 <sup>00</sup>
Bowles Maudie	22 Byrd St Chesley	18 <sup>00</sup>	9 <sup>00</sup>	9 <sup>00</sup>	II	18 <sup>00</sup>
Barker V. H.	514 Hampton St Stratford	18 <sup>00</sup>	9 <sup>00</sup>	9 <sup>00</sup>	III	18 <sup>00</sup>
Baker H. H.	71 Woodlawn Ave Thornton	20 <sup>00</sup>	10 <sup>00</sup>	10 <sup>00</sup>	I	20 <sup>00</sup>
Blackstock W. B.		20 <sup>00</sup>	Toronto Conf			20 <sup>00</sup>
Baker S.	122 Fern Ave	20 <sup>00</sup>	Toronto Conf			20 <sup>00</sup>
Brace A. J.	Wallerdale	20 <sup>00</sup>				20 <sup>00</sup>
Burwash S. M.	113 Blom. St 120 Cumberland	20 <sup>00</sup>				20 <sup>00</sup>
Book A. H.	West Ely Ave 361 Church St	20 <sup>00</sup>				20 <sup>00</sup>
Barber J. Louis	Woodstock	20 <sup>00</sup>	Hamilton Conf			20 <sup>00</sup>
Bradshaw G. H.	Hamilton 137 Church St	20 <sup>00</sup>	P. C.			20 <sup>00</sup>
Brown Norma G.	Medina	36 <sup>00</sup>	36 <sup>00</sup>	—	I	36 <sup>00</sup>
Bayshaw J. A.	477 Marion St	36 <sup>00</sup>	36 <sup>00</sup>	—	IV	36 <sup>00</sup>
Brownell H. W.	Kemptville	10 <sup>00</sup>	10 <sup>00</sup>	—	—	10 <sup>00</sup>

1903-1904

NAME.	ADDRESS.	Amount.	First Instalment.	Second Instalment.	Third Instalment.	TOTAL.
Brown Walter T.	Lakefield 50 Alexanders	36 <sup>00</sup>	18 <sup>00</sup>	18 <sup>00</sup>	I	36 <sup>00</sup>
Burgess Miss M.	Marion Brimley St	36 <sup>00</sup>	18 <sup>00</sup>	18 <sup>00</sup>	I	36 <sup>00</sup>
Billy George	23 Walton Collingwood	36 <sup>00</sup>	18 <sup>00</sup>	18 <sup>00</sup>	I	36 <sup>00</sup>
Bernie Miss M.	Brimley St Ottawa	36 <sup>00</sup>	18 <sup>00</sup>	18 <sup>00</sup>	I	36 <sup>00</sup>
Biggar	Highland 19 Byrd St	36 <sup>00</sup>	18 <sup>00</sup>	18 <sup>00</sup>	I	36 <sup>00</sup>
Ball E. E.	Lansing London	36 <sup>00</sup>	18 <sup>00</sup>	18 <sup>00</sup>	II	36 <sup>00</sup>
Bowman Fred C.	181 Ryburgh Medina Rd	36 <sup>00</sup>	schdp	—	II	Schdp
Brown Homer G.	137 Church St Stratford	36 <sup>00</sup>	18 <sup>00</sup>	18 <sup>00</sup>	II	36 <sup>00</sup>
Bennett J. D.		36 <sup>00</sup>	18 <sup>00</sup>	18 <sup>00</sup>	III	36 <sup>00</sup>
Baxter Miss M.	41 Markham London	36 <sup>00</sup>	18 <sup>00</sup>	18 <sup>00</sup>	IV	36 <sup>00</sup>
Bishop Chas. W.	16 Waitland	18 <sup>00</sup>	18 <sup>00</sup>	—	IV	18 <sup>00</sup>
Baker Herbert W.	39 Brunswick St. Catharines	18 <sup>00</sup>	9 <sup>00</sup>	9 <sup>00</sup>	I	18 <sup>00</sup>
Bunting Miss M.	Brimley St Thornton	36 <sup>00</sup>	Schdp	—	I	Schdp
Blackstock W. B.		20 <sup>00</sup>	10 <sup>00</sup>	10 <sup>00</sup>	I	20 <sup>00</sup>
Bayshaw J. A.	477 Marion	36 <sup>00</sup>	18 <sup>00</sup>	—	IV	18 <sup>00</sup>
Booth Ethel H.	246 Brock Ave	18 <sup>00</sup>	9 <sup>00</sup>	9 <sup>00</sup>	I	18 <sup>00</sup>
Baker Harold H.	39 Brunswick Queen's Road	18 <sup>00</sup>	9 <sup>00</sup>	9 <sup>00</sup>	IV	18 <sup>00</sup>
Bull Benj. J.	36 Brimley St London	36 <sup>00</sup>	18 <sup>00</sup>	18 <sup>00</sup>	II	36 <sup>00</sup>
Bishop S. P.	16 Waitland West Ely Ave	20 <sup>00</sup>	Toronto Conf			20 <sup>00</sup>
Booth A. H.	120 Cumberland	20 <sup>00</sup>				20 <sup>00</sup>
Bruce A. J.	Newmarket 181 Waitland	20 <sup>00</sup>				20 <sup>00</sup>
Beer J. H.	London 473 Church	20 <sup>00</sup>	London			20 <sup>00</sup>
Beel W. G.	Cleveland Ohio 33 Cumberland	20 <sup>00</sup>	Hamilton			20 <sup>00</sup>
Brown J. G.	Lakefield 50 Ryburgh	20 <sup>00</sup>	Bay Conf			20 <sup>00</sup>
Barrett C. W.	Newmarket	20 <sup>00</sup>				20 <sup>00</sup>
Baillie J. E.	Hamilton 182 North St	20 <sup>00</sup>	Main			20 <sup>00</sup>
Bradshaw G. H.	296 Bait	20 <sup>00</sup>	P. C.			20 <sup>00</sup>

1903-04

NAME.	ADDRESS.	Amount.	First Instalment.	Second Instalment.	Third Instalment.	TOTAL.
Bach Mrs. School of Hygiene		5.00	5.00	—	Spec.	5.00
Bonnick Miss	613 James St. Highville	6.00	6.00	—	Spec.	6.00
Brownlee Hugh W.	57 Brunswick Ave.	23.00	23.00	—		23.00
Cruck Mrs. Mann School of Hygiene		8.00	8.00	—		8.00
Damp Mrs. Mrs. 417 James St.	Edy Hill	7.00	7.00	—	Spec.	7.00

1904-1905

NAME.	ADDRESS.	Amount.	First Instalment.	Second Instalment.	Third Instalment.	TOTAL.
Bishop E. S.	Loudon 16 Hartland St.	20.00			For sale Conf.	20.00
Bishop C. W.	"	20.00				20.00
Booth A. H.	"	20.00				20.00
Beer J. H.	Loudon					
Barber J. H.	Broadstack 561 Church St.	20.00			Hamilton	20.00
Bradshaw G. S.	Hamilton 65 Gray St.	20.00				20.00
Bull W. G.	Cleveland, Ohio 32 Gray St.	20.00				20.00
Brown J. G.	Katefield 57 Bloor East	20.00				20.00
Breechen Thos. H.	190 Brockville St. 41 Brunswick Ave.	18.00	18.00	—	I	18.00
Bearman H. A. R.	Amesley Hall Wellingboro	10.00	10.00	—	I	10.00
Broadbent H. R.	Amesley Hall Parkville	36.00	36.00	2.00	I	36.00
Barcl Jean H.	Amesley Hall	36.00	36.00	—	I	36.00
Barber R. W.	Stratford 39 Bloor St.	36.00	18.00	18.00	I	36.00
Buelcher H. H.	St. Mary's Bellevue	36.00	18.00	18.00	I	36.00
Brownlee J. C.	Loudon 101 Brunswick St.	36.00	18.00	18.00	I	36.00
Brygar Hazel A.	Amesley Hall Loudon	36.00	18.00	18.00	II	36.00
Burges J. W. Bell	"	36.00	18.00	18.00	II	36.00
Booth E. H. D.	246 Brockville Spencerville	18.00	9.00	9.00	II	18.00
Bennett J. D.	71 Gloucester	36.00	18.00	18.00	II	36.00
Bunting Maud	Collingwood	36.00	36.00	—	II	36.00
Bernie Marie	Amesley Hall Hamilton	36.00	18.00	18.00	II	36.00
Blackstock W. C.	77 James Ave. Katefield	20.00	10.00	10.00	II	20.00
Brown Walter D.	37 Bloor St. E.	36.00	18.00	18.00	II	36.00
Baker N. W.	39 Brunswick St. 419 Brunswick St.	18.00	9.00	9.00	II	18.00
Boorman S. C.	Hamilton 182 Bloor St. W.	36.00	36.00	—	III	36.00

NAME.	ADDRESS.	Amount.	First Instalment.	Second Instalment.	Third Instalment.	TOTAL.
Black Emerson E.	Hamming	36.00	18.00	18.00	III	36.00
Brown Homer G.	137 Church St	36.00	18.00	18.00	III	36.00
Bull Benj. J.	Burham 245 Essex Ave	36.00	18.00	18.00	III	36.00
Burnell John D.	Stratford	36.00	18.00	18.00	III	36.00
Brownie H. C.	Keenleyside 433 Chesapeake P. G.	—	—	—	P. G.	—
Bullby Geo. H.	Blair St 51 Bay St	36.00	18.00	18.00	III	36.00

1905-6.

Black A. E.	Queensport 653 Acadia	20.00	Toronto	I	20.	
Broth A. H.	West Bay 177 Brunswick	20.00	"	"	20.	
Bowles W. C.	105 Mill St	20			20.00	
Bev J. H.			London			
Bull W. J.	Cleveland Ohio 52 Bay St	20.00	Hamilton		20.00	
Burman E.	at Acadia College		Bay Con.			
Brown J. G.	Lakeside 71 Bay St	20.00			20.00	
Bard J. C.	Brookbridge 45 Bay St	20.00	Assiniboia		20.00	
Burton E. R. M.	174 York St St. John's	20.00			20.00	
Bullock, Miss B. C.	Keenleyside Hall	36.00	18.00	18.00	III	36.00
Burman, H. C.	London 152 Bealough	Schp.		IV	Schp.	
Buchanan, George	152 Bay St	36.00	18.00	18.00	I	36.00
Baker W. Roy	Smithville 512 Church	36.00	18.00	18.00	I	36.00
Baffam Edward	Bayville 45 Bay St	36.00	36.00	—	I	36.00
Bowles, Allan	Blair St 63 Bay	36.00	18.00	18.00	I	36.00
Bermie Miss M. C.	Keenleyside Hall	36.00	18.00	18.00	I	36.00
Buckingham, Geo. L.	Keenleyside Hall 146 Brunswick	36.00	18.00	18.00	II	36.00
Bowles Frank N.	Blair St 15 Conn St	36.00	18.00	18.00	II	36.00

1905-6.

NAME.	ADDRESS.	Amount.	First Instalment.	Second Instalment.	Third Instalment.	TOTAL.
Barber Percy W.	Stratford	36.00	18.00	18.00	III	36.00
Burman J. B. S.	70 Seaton St Keenleyside Hall	10.00	10.00	—	II	10.00
Bard Miss Jean T.	Keenleyside Hall 146 Brunswick	36.00	18.00	18.00	II	36.00
Bigger H. C.	Keenleyside Hall St. John's	36.00	18.00	18.00	II	36.00
Butcher Frank H.	15 Sullivan St. Keenleyside Hall	36.00	18.00	18.00	II	36.00
Bugg Nathan R.	376 Bay St	20.00	18.00	2.00	II	20.00
Baker Herbert W.	391 Brunswick London	15.00 7.75 7.25	7.75	7.75	III	15.50
Burgess, Miss J. B.	Keenleyside Hall	36.00	18.00	18.00	III	36.00
Broth Miss Ethel H.	246 Brockton	18.00	9.00	9.00	III	18.00
Ball E. C.	Keenleyside Hall 146 Brunswick	36.00	18.00	18.00	II	36.00
Bermie Miss M. C.	Keenleyside Hall Chicago Ill	36.00	18.00	18.00	III	36.00
Bicknell Miss Lillian	Keenleyside Hall Keenleyside	36.00	18.00	18.00	III	36.00
Bunting, Miss Maud	Keenleyside Hall 558 Church	36.00	Schp.	—	III	Schp.
Bilby George H.	Blair St 147 Blair St	36.00	18.00	18.00	III	36.00
Brown W. L.	Keenleyside Hall 75 Bay St	36.00	18.00	18.00	III	36.00
Broad Luella	Keenleyside Hall Keenleyside	36.00	36.00	—	II	36.00
Brownie W. G.	304 Huron St 526 Church	36.00	18.00	18.00	II	36.00
Brown Homer G.	Keenleyside Hall Medina	36.00	18.00	18.00	II	36.00
Bonnett L. D.	Spencer 412 Gerrard St	36.00	18.00	—	III	—
Barber J. H.		—	—	—	P. G.	—
Brock Rev. G. B.	246 Brock Ave	—	—	—	Keenleyside	—

C.

1902-3

NAME.	ADDRESS.	Amount.	First Instalment.	Second Instalment.	Third Instalment.	TOTAL.
Claver S. S.	442 Jarvis St	18 <sup>00</sup>	18 <sup>30</sup>	—	II	18 <sup>30</sup>
Cumpley J. P.	65 Grenville Victoria	36 <sup>00</sup>	36 <sup>00</sup>	—	II	36 <sup>00</sup>
Callaghan J. C.	39 1/2 George St Hamilton	36 <sup>00</sup>	36 <sup>00</sup>	—	I	36 <sup>00</sup>
Connolly Miss M.	28 Bross St Hamilton	36 <sup>00</sup>	18 <sup>00</sup>	18 <sup>00</sup>	I	36 <sup>00</sup>
Campbell Miss E. S.	41 Wilson Kenton	18 <sup>00</sup>	9 <sup>00</sup>	9 <sup>00</sup>	II	18 <sup>00</sup>
Conroy M. E.	Toronto Junction	36 <sup>00</sup>	18 <sup>00</sup>	21 <sup>00</sup>	I	36 <sup>00</sup>
Chorine J. H.	31 Madisson Ave	18 <sup>00</sup>	18 <sup>00</sup>	—	II	18 <sup>00</sup>
Church Miss S. L.	Toronto Junction	36 <sup>00</sup>	—	—	I	36 <sup>00</sup>
Cullen Miss M.	20 Macdonell	18 <sup>00</sup>	9 <sup>00</sup>	9 <sup>00</sup>	II	18 <sup>00</sup>
Cullen - H. E.	20	18 <sup>00</sup>	9 <sup>00</sup>	9 <sup>00</sup>	I	18 <sup>00</sup>
Campbell - R. E.	Grand Union 7 Charles	16 <sup>00</sup>	8 <sup>00</sup>	—	Spec.	
Cushing - Louis	Ontario	7 <sup>00</sup>	3 <sup>50</sup>	3 <sup>50</sup>	Spec.	7 <sup>00</sup>
Cummins H. H.	473 Church St Hamilton	36 <sup>00</sup>	18 <sup>00</sup>	18 <sup>00</sup>	I	36 <sup>00</sup>
Clark A. H.	99 1/2 Appleton Windsor	18 <sup>00</sup>	9 <sup>00</sup>	9 <sup>00</sup>	II	18 <sup>00</sup>
Carr Mrs Stephen	48 Hayden Colborne	31 <sup>00</sup>	31 <sup>00</sup>	—	III	31 <sup>00</sup>
Cantelon John W.	24 Bross St Kentville	36 <sup>00</sup>	18 <sup>00</sup>	18 <sup>00</sup>	III	36 <sup>00</sup>
Connolly W. G.	19 Bross St Hamilton	36 <sup>00</sup>	18 <sup>00</sup>	18 <sup>00</sup>	II	36 <sup>00</sup>
Cochran James	82 Bross St Burr	36 <sup>00</sup>	—	—	I	36 <sup>00</sup>
Comber J. J.	120 Cumberland Loree	20 <sup>00</sup>	Toronto	—	—	20 <sup>00</sup>
Conroy W.	7 Bross St Grantham	20 <sup>00</sup>	London	—	—	20 <sup>00</sup>
Copeland J. W.	6 Cumberland Kentville	20 <sup>00</sup>	Hamilton	—	—	20 <sup>00</sup>
Clare D. R.	7 Cumberland Chapman	20 <sup>00</sup>	Bay	—	—	20 <sup>00</sup>
Clary J. H.	107 Arkwright	20 <sup>00</sup>	—	—	—	20 <sup>00</sup>
Croft H. H.	Brighton	20 <sup>00</sup>	—	—	—	20 <sup>00</sup>
Chapman J. J.	10 St Joseph Oreos	20 <sup>00</sup>	—	—	—	20 <sup>00</sup>
Claver Miss M.	442 Jarvis St	36 <sup>00</sup>	18 <sup>00</sup>	18 <sup>00</sup>	Spec.	—

NAME.	ADDRESS.	Amount.	First Instalment.	Second Instalment.	Third Instalment.	TOTAL.
Cruz Albert	32 Belmont St Toronto	2 <sup>00</sup>	—	—	—	II
Candwell Mr J. L.	384 Sherburne 149 Cumberland Port Dover	3 <sup>00</sup>	1 <sup>50</sup>	1 <sup>50</sup>	I	3 <sup>00</sup>
Cruise Geo. A.	Port Dover	27 <sup>00</sup>	9 <sup>00</sup>	18 <sup>00</sup>	—	27 <sup>00</sup>
Cable, Thos Geo.	25 Malley St	23 <sup>00</sup>	15 <sup>00</sup>	8 <sup>00</sup>	—	23 <sup>00</sup>

1903-1904

NAME.	ADDRESS.	Amount.	First Instalment.	Second Instalment.	Third Instalment.	TOTAL.
Chadwick Ethel	125 Seclaware Gables	36.00	Self	-	I	Self
Croston Hannah	633 Church St	11.00	5.50	5.50	Spec	11.00
Corcoran Edwale	400 Markham Ingersoll	1.50	-	-	-	1.50
Chenwellth J J	123 College St	36.00	18.00	18.00	I	36.00
Curman M. E.	Gregg Winnistey Hall	36.00	36.00	-	I	36.00
Cornwall Pauline	Winnistey Hall	18.00	18.00	-	I	18.00
Cullen Kate E.	20 Macdonald	18.00	18.00	-	II	18.00
Chubb Mrs. E. H.	Forrest Junction	36.00	Self	-	II	Self
Courson M. E.	Peterboro	36.00	18.00	-	II	36.00
Campbell J. P.	147 McMillan	36.00	36.00	-	III	36.00
Cannolly W. G.	Camtown Warton	36.00	18.00	2.00	III	20.00
Clark R. H.	77 Hamilton Port Dover	18.00	9.00	9.00	III	18.00
Cruise Geo. A.	160 Queenstown	36.00	18.00	18.00	III	36.00
Care J. P.	Colony 48 Haydon	26.00	26.00	-	IV	26.00
Cantelony John W.	Stratville 29 Guy St.	36.00	18.00	18.00	IV	36.00
Claver Ernest	432 Jarvis Barr.	13.00	13.00	-	IV	13.00
Cahoon J. W.	6 Guy Karee	Self	-	-	II	Self
Candler J. J.	31 Chevaline Wainstead	20.00	Forrest Junction	-	-	20.00
Collin W. H.	114 Yorkville	20.00	London	-	-	20.00
Crowley Wm.	Shantree 17 Guy St.	20.00	-	-	-	20.00
Copeland J. Milton	Smithville 40 Bernard	20.00	Namulla	-	-	20.00
Carter E. Weston	Harrison 12 Belmont	20.00	-	-	-	20.00
Chapman J. H.	Cross 10 Belmont	20.00	Bay	-	-	20.00
Clark W. H.	64 Upper 71 Victoria Ave.	20.00	-	-	-	20.00
Croft H. H.	Brighton 210 Guy St.	20.00	-	-	-	20.00
Cake Am. G.	28 Forrey	36	16	20.00	II	36.00

NAME.	ADDRESS.	Amount.	First Instalment.	Second Instalment.	Third Instalment.	TOTAL.
Combs Fred C.	68 First Rd. W. Bradford	23.00	23.00	-	-	23.00
Cornolly Maudie	Camtown 37 Guy St.	10.00	10.00	-	I	10.00

Y  
E  
L  
L

1904-05

NAME.	ADDRESS.	Amount.	First Instalment.	Second Instalment.	Third Instalment.	TOTAL.
	<i>Ingersoll</i>					
Chenoweth G. J.	57 Hayden St. Col. Springs	20.	Toronto Conf.			20.
Coulter C. H.	51 Cumberland Harrison	20.	London			20.
Curley C. W.	57 1/2 Haywards gust	20.	Hamilton			20.
Cooper A. H.	8 Crosswain Hicksville	20.				20.
Copeland J. W.	7 North St Hicksville	20.				20.
Clare W. R.	258 Huron St Brighton		Bay			20.
Crossy H. H.	9 Bogar St. Hicksville	20.00	B. C.			20.
Crateworth E. T.	218 Carlton St.	36.00	18.00	18.00	I	36.00
Colman H. H.	476 Huron St. Canton	36.00	18.00	18.00	I	36.00
Cowley G. J.	37 Gurnet 23 Gurnet	36.00	18.00	18.00	I	36.00
Craig W. J. W.	Manchester Hicksville	36.00	18.00	18.00	I	36.00
Courice W. W.	153 Cumberland	36.	18.	18.00	I	36.00
Cooper C. C.		36.00			I	
Chadwick E. C.	121 Pelawards Hicksville	36.00	18.	18.00	II	36.00
Cunningham H. W.	Hicksville Ingersoll	18.00	18.00		II	18.00
Caseman Maggie E.	Barclay Hill	36.00	36.00		II	36.00
Coombs Fred C.	Bradford	36.00	18.	18.00	II	36.00
Cullen Kate G.	20 Macdonnell	18.	9.	9.00	III	18.00
Chubb Ethel L.	Toronto Junction	36.00	Setp.		III	Setp.
Chouin J. W.	34 Gurn St. 189 Pacific Ave.	36.00			III	Setp.
Crosby Mrs. M. B.	Toronto Junction Canton	36.00	36.00		III	36.00
Cronley W. G.	Peterboro	20.00	10.00	10.00	IV	20.00
Campbell Thos. P.	177 McWilliam St Port Dover	36.00	36.00		IV	36.00
Cranley Geo. C.	9 Sussex Ave Warton	36.00	18.00	18.00	IV	36.00
Clark Robt. H.		18.	9.00	9.00	IV	18.00

1904-05

NAME.	ADDRESS.	Amount.	First Instalment.	Second Instalment.	Third Instalment.	TOTAL.
Chapple Mrs. Lela.	1500 Green St.	3.00				3.00
Coxey Miss Edna.	157 Clarendon Madoc	6.00	3.00			6.00
Connor C. H.	120 Cumberland	20.00	B. C. Conf.			20.00
Chapman Louis		2.00	2.00			2.00
	<i>1906.</i>					
Cornolly W. G.	Myrtle St 32 Gurnet Ave. Col. Springs	20.00	London Conf.			20.00
Coulter C. W.	7 Bogar St. Harrison	20.00			II	20.00
Carter C. M.	48 Ann St. Brighton	20.00	Hamilton			20.00
Cassmore G. S.	31 Bogar gust P. O. 547	20.00			I	20.00
Cooper C. M.	14 Cumberland Hicksville	20.00				20.00
Copeland J. M.	37 Haver St. E. Brighton	20.00				20.00
Craig H. H.	9 Bogar St. Hicksville	20.	Bay			20.00
Cullis R. E.	34 Bogar St. Hicksville	20.00	B. C.			20.00
Cobwell J. C.	51 Bogar St. Madoc	20.00			II	20.00
Connor C. H.	120 Cumberland	20.00			III	20.00
Culp M. M.	120 Cumberland Hicksville	20.	Union			20.00
Clarke H. F. J.	199 College St Richmond Hill	36.00	18.00	18.00	I	36.00
Campbell Geo. H.		36.00	18.00		I	18.00
Chubb Miss Alice	Toronto June London	36.00	18.00	18.00	I	36.00
Clement W. P.	22 St. Mary St. Mallory Bay	36.00	18.00	18.00	I	36.00
Connolly C. H.	5 L. Luther Ave.	36.00	18.00	18.00	I	36.00
Copeland Gordon G.	140 Spadina Hicksville	36.00	18.00	18.00	I	36.00
Courice W. W.	6 Bogar St.	36.00	18.00	18.00	II	36.00
Crateworth E. T.	218 Carlton St. Hicksville	36.00	18.00	18.00	II	36.00
Cass W. M.	10 St. Joseph	36.00	18.00	18.00	II	36.00
Colman Miss Helen	476 Huron	36.00	18.00	18.00	II	36.00

1915-6.

NAME.	ADDRESS.	Amount.	First Instalment.	Second Instalment.	Third Instalment.	TOTAL.	NAME.	ADDRESS.	Amount.	First Instalment.	Second Instalment.	Third Instalment.	TOTAL.
Crombie J.E.	<sup>Bradford</sup> 11 St Joseph	36 <sup>00</sup>	18 <sup>00</sup>	18 <sup>00</sup>	III	36 <sup>00</sup>							
Shadwick, Mrs E.J.	68 Dufferin Av.	36 <sup>00</sup>	18 <sup>00</sup>	18 <sup>00</sup>	III	36 <sup>00</sup>							
Sarman, Miss M.C.	<sup>Inquiries</sup> Connaught Hall	36 <sup>00</sup>	18 <sup>00</sup>	18 <sup>00</sup>	III	36 <sup>00</sup>							
Schubt, Miss E.L.	Toronto Junc.	36 <sup>00</sup>	Schp.	—	IV	Schp.							
Conroy, M.E.	139 <sup>1/2</sup> Clapton Av.	36 <sup>00</sup>	18 <sup>00</sup>	18 <sup>00</sup>	IV	36 <sup>00</sup>							
Cullen, Miss K.B.	20 Macdonell	18 <sup>00</sup>	9 <sup>00</sup>	9 <sup>00</sup>	IV	18 <sup>00</sup>							
Corbett, Jas. W.	<sup>225</sup> <sup>125</sup> <sup>St. George</sup> <sup>St. George</sup> <sup>St. George</sup>	36 <sup>00</sup>	Schp.	—	IV	Schp.							
Cummins, Mrs M.	75 Robert St.	18 <sup>00</sup>	18 <sup>00</sup>	—	III	18 <sup>00</sup>							
Colme, Leo. A.	<sup>appled</sup> 654 Spadina Av.	36 <sup>00</sup>	—	—	I	Schp.							
Cran, Mrs M.	<sup>Edgemoor</sup> 50 Bainsford	18 <sup>00</sup>	18 <sup>00</sup>	—	I	18 <sup>00</sup>							
Cocking, Mrs H.	<sup>Burham</sup> Hunstable Ave	18 <sup>00</sup>	9 <sup>00</sup>	9 <sup>00</sup>	—	18 <sup>00</sup>							
Cavies, John S.	236 Marlborough St.	36 <sup>00</sup>	18 <sup>00</sup>	18 <sup>00</sup>	I	—							
Clepper, J.H.		36 <sup>00</sup>	18 <sup>00</sup>	18 <sup>00</sup>	II	36 <sup>00</sup>							
Coleman, Miss J.	<sup>Springfield</sup> 50 Main St	8 <sup>00</sup>	8 <sup>00</sup>	—	I	8 <sup>00</sup>							
Clark, E. A.	<sup>Marquette</sup> Newbury Place	Schp.	—	—	I	Schp.							

D E E

NAME. ADDRESS. Amount. First Instalment. Second Instalment. Third Instalment. TOTAL.

NAME. ADDRESS. Amount. First Instalment. Second Instalment. Third Instalment. TOTAL.

D  
E  
E  
C  
L



D.

1902-3.

NAME.	ADDRESS.	Amount.	First Instalment.	Second Instalment.	Third Instalment.	TOTAL.
Douglas Miss A. C.	220 Wellesley	5 <sup>00</sup>	2 <sup>50</sup>	2 <sup>50</sup>	None	5 <sup>00</sup>
Dwight Miss C.	31 Major St	36 <sup>00</sup>	18 <sup>00</sup>	18 <sup>00</sup>	None	36 <sup>00</sup>
Dunham A. H.	136 Robert St	36 <sup>00</sup>	18 <sup>00</sup>	18 <sup>00</sup>	None	36 <sup>00</sup>
Dunham R. G.	"	36 <sup>00</sup>	18 <sup>00</sup>	18 <sup>00</sup>	None	36 <sup>00</sup>
Dunwall Miss	388 Huron St	?			IV	
Deacon Adm.	126 Yorkville 14 Colborne	36 <sup>00</sup>			I	Schp.
Davison J. H.	48 Atholborough	36 <sup>00</sup>	18 <sup>00</sup>	18 <sup>00</sup>	II	36 <sup>00</sup>
Demille G. W.	56 1/2 Cumberland St Brighton	20 <sup>00</sup>		Bay Conf.		20 <sup>00</sup>
Dunson J. A. W.	246 Brunswick	36 <sup>00</sup>	10 <sup>00</sup>		III	11 <sup>00</sup>
Dunard Emma M.	118 Main St	23 <sup>00</sup>		23 <sup>00</sup>	III	23 <sup>00</sup>

1903-1904.

NAME.	ADDRESS.	Amount.	First Instalment.	Second Instalment.	Third Instalment.	TOTAL.
Dwight Herbert	42 Brewell St 54 Niagara St	Schp. 36 <sup>00</sup>			I	Schp.
Drafton Leonard	23 Cross St Windsor	36 <sup>00</sup>	18 <sup>00</sup>	18 <sup>00</sup>	I	36 <sup>00</sup>
Dufour Margaret M.	Commercial Hall	36 <sup>00</sup>	18 <sup>00</sup>	18 <sup>00</sup>	I	36 <sup>00</sup>
Davison J. H.	118 Atholborough	36 <sup>00</sup>	18 <sup>00</sup>	18 <sup>00</sup>	III	36 <sup>00</sup>
Dwight S. C.	Pictou 42 Brewell	36 <sup>00</sup>	18 <sup>00</sup>	18 <sup>00</sup>	III	36 <sup>00</sup>
Dunson J. A. W.	234 Brunswick	31 <sup>00</sup>	31	31	III	36 <sup>00</sup>
Deacon Adm.	126 Yorkville 14 Colborne	18 <sup>00</sup>	9 <sup>00</sup>	9 <sup>00</sup>	II	18 <sup>00</sup>
Dunard Emma M.	Commercial Hall Windsor	36 <sup>00</sup>	18 <sup>00</sup>	18 <sup>00</sup>	II	36 <sup>00</sup>
Daniels W. P.	51 Ogden St	20 <sup>00</sup>		Hamilton Conf.		20 <sup>00</sup>

1904-1905

NAME.	ADDRESS.	Amount.	First Instalment.	Second Instalment.	Third Instalment.	TOTAL.
Dudgeon J. W.	30 Cameron St Exeter	20.00	Toronto Conf			20.
Dowse G. W.	57 Campbell St Stratford	20.00	London			20.
Davidson W. W.	27 Gordon St.	36.00	18.00	18.00	I	36.00
Dowse R. A.	Brookstown	36.00	18.00	18.00	I	36.00
Dowse E. B.	Highgate West Hill	36.00	18.00	18.00	I	36.00
Dry Geo. H.	238 Victoria Ave Toronto	36.00	18.00	18.00	I	36.00
Delahoy Miss M.	Amesley Hall Niagara	36.00	36.00		I	36.00
Drape Miss M. K.	Amesley Hall Niagara	36.00	18.00	18.00	II	36.00
Dwight H. B.	98 St Patrick St	36.00	Schp			Schp
Dwight Harold.	423 Ossington Ave Toronto	36.00	18.00	18.00	II	36.00
Dwight Helen E.	Amesley Hall Niagara	18.00	9.00	9.00	III	18.00
Dwight Lewis G.	98 St Patrick St	36.00	18.00	18.00	IV	36.00
Dawson J. A. W.			Schp			Schp
Dingman Harb.		7.00	7.00			Creag 7.00
Dunkley Mrs. M. W.	55 Regent St 48 Highgate	6.00	6.00			6.00
Dunbar John R.	Reginald Dearborn Ave Niagara	36.00	18.00	18.00	IV	36.00
Dean B. E.	23 Alder St.	18.00	18.00		I	18.00
Dawling Miss	School of Expression	8.00	8.00			Spe 8.00

1905-6

NAME.	ADDRESS.	Amount.	First Instalment.	Second Instalment.	Third Instalment.	TOTAL.
Dudgeon J. W.	30 Cameron St Exeter	20.00	Toronto			20.00
Dwan G. W.	144 Cumberland Hamilton	20.00	London			20.00
Danard, C. H.	33 St James St. London	20.00	Hamilton			20.00
Dunnett, Miss G. B.	Amesley Hall	36.00	18.00	18.00	I	36.00
Duth P. E.	41 Grove Ave. Toronto	36.00	18.00	18.00	I	36.00
Dunn Miss L.	Amesley Hall Stratford	10.00	10.00		I	10.00
Davidson, J. W.	97 St James London	36.00	18.00	18.00	II	36.00
DeLaney, Miss D. M.	116 Parkville Ave Niagara	36.00	18.00		II	
Dunham, Miss B. M.	Amesley Hall Aldershot	36.00	18.00	18.00	II	36.00
Down, E. C.	126 Parkville Niagara	36.00	18.00	18.00	II	36.00
Dongan, Harry L.	110 Lynn Terland Hamilton	36.00	18.00	18.00	II	36.00
Danard, Chas. H.	35 St James St Niagara	36.00	Hamilton		II	
Drape Miss M. W.	Amesley Hall Niagara	36.00	18.00	18.00	III	36.00
Dwight, Ada E.	Amesley Hall	18.00	9.00	9.00	IV	18.00
Dwight, Miss L.	423 Ossington 144 Cumberland	36.00	18.00	18.00	III	36.00
Dwight, R. A.	Cooperville West Hill	36.00	18.00	18.00	II	36.00
Dry Geo. H.	10 St Joseph St.	18.00	18.00		I	18.00
Dawson J. L. W.	224 River Street Toronto					P. 9
Dean Miss G.	36 Bazaar St	18.00	18.00		I	18.00

NAME.	ADDRESS.	Amount.	First Instalment.	Second Instalment.	Third Instalment.	TOTAL.	NAME.	ADDRESS.	Amount.	First Instalment.	Second Instalment.	Third Instalment.	TOTAL.

1906-7.

RECEIVED

6.

1902-3.

NAME.	ADDRESS.	Amount.	First Instalment.	Second Instalment.	Third Instalment.	TOTAL.
Bakins P. W.	60 Prince Street	36.00	18.00	18.00	III	36.00
Edy Miss S. M.	Alliston	18.00	9.00	9.00	II	18.00
Elliot Alexander	55 Alexander Peterboro	36.00	18.00	18.00	II	36.00
Erskine Miss	90 Spruce Hill	14.00	4.00	—	—	14.00

190

1903-1904.

NAME.	ADDRESS.	Amount.	First Instalment.	Second Instalment.	Third Instalment.	TOTAL.
Bellevue Alexander	Peterboro 22 Gary St.	36.00	18.00	18.00	III	36.00
Benson Albert J.	Hyde Park	36.00	18.00	18.00	II	36.00
Bakins P. W.	60 Prince Street	36.00	18.00	18.00	II	36.00

1904-1905

Edmison Alexander	Brighton 86 Gary St.	18.00	9.00	9.00	II	18.00
Edmison P. W.	Peterboro	18.00	9.00	9.00	II	18.00
Elliot Alex.	116 Elm St.	36.00	36.00	—	II	36.00

1905-6.

Living Chas. J.	<sup>Luboga</sup> 3 Hitchcock Av.	36.00	36.00	—	I	36.00
Emerson Emily	<sup>Moor</sup> 60 Logans	6.00	3.00	3.00	III	6.00
Edmison P. W.	<sup>Pittsfield</sup> 90 Gary St.	14.00	—	—	—	14.00





27

1902-3

NAME.	ADDRESS.	Amount.	First Instalment.	Second Instalment.	Third Instalment.	TOTAL.
Ford A. H.	10 Marsh St Forest	18.00	9.00	9.00	IV	18.00
Wife Miss Lucia	509 Church St Peterboro	36.00	18.00	18.00	III	36.00
Wife Miss Martha	41 Balmwood St Peterboro	18.00	18.00			18.00
Wife Miss Sarah	8 Brunswick Peterboro	36.00	18.00	18.00	I	36.00
Farrell Fred G.	8 Newlandworth Peterboro	36.00	18.00	18.00	I	36.00
Forster Ernest	83 College St Granlypton	31.00	31.00		IV	31.00
Flavelle Miss Minnie	Lucas Park 120 Cumberland	10.00	10.00		Spec	10.00
Farley Harry	Belleville	36.00	18.00	18.00	III	36.00
Fisher, C. L.	Clinton 570 Spaulding	10.00	5.00	5.00		10.00
Farwell S. L.	Strayton 56 Cyax St	20.00	Toronto Conf			20.00
Friday W. A.	Kimcardine 63 Collier St	20.00	London			20.00
Forbes C. A.	Fredericton 99 Forest St	20.00	N.S.			20.00
Fulleton A. F.	Parrboro.	18.00	18.00		II	18.00

1903-1904

NAME.	ADDRESS.	Amount.	First Instalment.	Second Instalment.	Third Instalment.	TOTAL.
Gleesing G. A. P.	371 Markham Gorham	36.00	18.00	18.00	I	36.00
Gord C. J.	3 Holyat Peterboro	36.00	18.00	18.00	I	36.00
Grant Pearl B.	Annecley Hill Peterboro	36.00	18.00	18.00	I	36.00
Gleesing Peter A.	1120 Buckner St Spec	10.00	10.00		I	10.00
Flavelle Minnie	Lucas Park Spec	10.00	10.00		Spec	10.00
Farrell Fred G.	Newlandworth Parrboro, N.H.	36.00	18.00	18.00	II	36.00
Fulleton A. F.	99 Hasleton Belleville	36.00	18.00	18.00	III	36.00
Farley Harry	33 Cumberland Peterboro	36.00	18.00	18.00	II	36.00
Wife Miss, C. L.	Annecley Hill Peterboro	36.00	18.00	18.00	IV	36.00
Gudger Peter	Woodville	13.00	13.00		Spec	13.00
Friday W. A.	Kimcardine 7 Cyax St	20.00	London			20.00
Fisher C. L.	Clinton 6 Lawrence	23.00	23.00		II	23.00

1904-1905

NAME.	ADDRESS.	Amount.	First Instalment.	Second Instalment.	Third Instalment.	TOTAL.
Hay G C	Fluicardine		Levittabouf			
Fentony W S	47 Cogan St.	20.00	London			20.00
Foreman G S	298 St. Hubert Hamilton North Valley	20.00	Hamilton			20.00
Flynn G S	18 St. Mary St	20.00	Montreal			20.00
Fleming H. M.	Blainville Bathurst St. Wk.	10.00	—		II	10.00
Font Karl A.	Bellevue Riverview Ave	36.00	14.00	22	II	36.00
Ford Clinton	Barnett St. Mary St.	36.00	18.00	18.00	II	36.00
Fennell Fred W.	Wapona 238 Robert St	36.00	Self		III	Self
Furlet J. G.	Hamilton 26 Cogan St	36.00	18.00	18.00	III	36.00
Fletcher L. H.	Parsboro, N.S. 99 Hazelatine St.	36.00	18.00	18.00	IV	36.00
Ferguson Geo. L.	New York 57 Cogan St.	15.00	15.00			15.00
Furbair Claude	150 38 Russell St	15.00	—		Once	15.00
Fryman S.	6.00 245 Service St	6.00	6.00		Once	6.00

1905-6.

NAME.	ADDRESS.	Amount.	First Instalment.	Second Instalment.	Third Instalment.	TOTAL.
Foreman G. D.	Hamilton 50 Hayden St.	20.00	Hamilton			20.00
Ford G. J.	300 3 Cogan St	36.00	18.00	18.00	III	36.00
Faint Mrs P. B.	Bellevue Connely Hall	36.00	18.00	18.00	III	36.00
Fennell Arthur B.	Wapona North Valley	36.00	36.00		IV	36.00
Flynn A. J.	8 Belmont St Bellevue	20.00	Montreal		Once	20.00
Farrill Fred J.	26 Cogan St	36.00	18.00	18.00	II	36.00
Fairweather Ben	67 Service St	2.50	2.50			2.50

1906-7

 1  
2  
3  
4  
5  
6  
7  
8  
9  
10  
11  
12  
13  
14  
15  
16  
17  
18  
19  
20  
21  
22  
23  
24  
25  
26  
27  
28  
29  
30  
31  
32  
33  
34  
35  
36  
37  
38  
39  
40  
41  
42  
43  
44  
45  
46  
47  
48  
49  
50  
51  
52  
53  
54  
55  
56  
57  
58  
59  
60  
61  
62  
63  
64  
65  
66  
67  
68  
69  
70  
71  
72  
73  
74  
75  
76  
77  
78  
79  
80  
81  
82  
83  
84  
85  
86  
87  
88  
89  
90  
91  
92  
93  
94  
95  
96  
97  
98  
99  
100



NAME.	ADDRESS.	Amount.	First Instalment.	Second Instalment.	Third Instalment.	TOTAL.
-------	----------	---------	-------------------	--------------------	-------------------	--------

NAME.	ADDRESS.	Amount.	First Instalment.	Second Instalment.	Third Instalment.	TOTAL.
-------	----------	---------	-------------------	--------------------	-------------------	--------

4

1902-3

NAME.	ADDRESS.	Amount.	First Instalment.	Second Instalment.	Third Instalment.	TOTAL.
Gray G. J. A.	16 Wright Ave Toronto Junction	101.00 30.00	10.00		IV	10.00
Gray S. R.	"	36.00	18.00	18.00	III	36.00
Gray Thos. H.	49 St. William Wapanacc	36.00	18.00	18.00	III	36.00
Graybridge J. M.	36 Cecil St New Brunswick	36.00	18.00	18.00	I	36.00
Gray J. H.	225 St. Clare Ave New Brunswick	36.00	18.00	18.00	II	36.00
Green W. F.	184 Cumberland Windsorhampton	36.00	18.00	18.00	II	36.00
Green W. J.	Centine Y. W. Co 10 St. Joseph St	7.00	7.00		Spec	7.00
Glass R. S.	28 Cumberland Windsorhampton	36.00	18.00	18.00	IV	36.00
Gray G. H.	Brighton	20.00	Toronto bond			20.00
Gifford W. A.	29 Gray St Clinton	20.00	London			20.00
Garnet Miss A. M.	100 St. Hill	3.00	3.00			3.00

1913-1914

NAME.	ADDRESS.	Amount.	First Instalment.	Second Instalment.	Third Instalment.	TOTAL.
Graham Helen B.	29 Grosvenor St. Mary	10.00	10.00		I	10.00
Gibb Wm. S.	28 St. Mary	36.00	18.00	18.00	I	36.00
Gifford Mrs. C. M.	Doncaster Hall Levelling	36.00	36.00		I	36.00
Gundy Mary	Doncaster Hall Wapanacc	18.00	18.00		I	18.00
Grange Gladys B.	Doncaster Hall Wapanacc	10.00	10.00		I	10.00
Graham Salsage	29 Kalamute	36.00	18.00	18.00	I	36.00
Gray Joseph H.	225 St. Clare Ave Windsorhampton	36.00	18.00	18.00	III	36.00
Green Will J.	184 Cumberland Windsorhampton	31.00	16.00	15.00	III	31.00
Gray S. R.	16 Wright Ave Wapanacc	36.00	18.00	18.00	IV	36.00
Grange Helen A.	Doncaster Hall	36.00	18.00	18.00	IV	36.00
Galloway Wilfrid		20.00	Toronto bond			20.00
Gray Geo. H.	Crichton 31 St. Andrews	20.00				20.00
Gifford W. A.	29 Gray St Windsorhampton	20.00	London			20.00
Goodenham Mrs. J. W.	100 St. Hill	3.00	3.00		Spec	3.00
Graham Will	500 Church Windsorhampton	3.00	3.00		Spec	3.00
Griffith Miss Helen	Doncaster Hall	18.00	18.00		Spec	18.00

1904-1905

NAME.	ADDRESS.	Amount.	First Instalment.	Second Instalment.	Third Instalment.	TOTAL.
Galloway W. E.	47 Lawrence St Hillsdale	20.00	London	20.		
Gardner S. C.	38 Bay St. St. Thomas	20.00				20.
Grifford W. D.	61 Bay St.	20.00	London			20.
Green Thos.	530 Bloor St. E.	20.00	14.6			20.
Gullen G. Egan	Bradford	36.00			I	
Gundy C. R.	Wingham Rosedene	18.00	18.00		I	18.00
Graham Wm. H.	Windsor Windsor	36.00			I	36.00
" "	" "	36.00	36.00		I	36.00
Gibbard Thos. Wm.	Windsor Humber	10.00	10.00		I	10.00
Goble Wm. H.	Windsor Bellair	36.00	18.00	18.00	I	36.00
Griffiths Wm. H.	Windsor	7.00	7.00		Acc.	7.00
Garrett W. H.	Windsor	3.00	3.00			3.00
Grange Gladys	Windsor	10.00	10.00		I	10.00
Griff. Wm.	Windsor	36.00	36.00		I	36.00
Gundy Mary V.	Windsor	18.00	18.00		I	18.00
Green William	Windsor	31.00	16.00	15.00	I	31.00
Gavin J. H.	Windsor	26.00	13.00	13.00	I	26.00
Graham Helen	Windsor	10.00	5.00	5.00	I	10.00

1905-6.

NAME.	ADDRESS.	Amount.	First Instalment.	Second Instalment.	Third Instalment.	TOTAL.
Linton, D. W.	Hillsdale 44 Bay St	20.00		Toronto		20.00
Lalloway, H. E.	312 Spadina	20.00				20.00
Lifford H. B.	London					20.00
Lullen J. J.	Windsor	20.00				20.00
Lullen J. E.	Windsor	20.00		Hamilton		20.00
Levin Thos.	530 Bloor St. W. Toronto	20.00	B. C.		I	20.00
Grange Tracy L.	Windsor Annex Hall	36.00	18.00		I	36.00
Lilburnson Miss F.	29 Shannon Windsor	26.00	13.00	13.00	I	26.00
Gale Mary	Windsor Annex Hall	36.00	36.00		I	36.00
Lundy Chas. R.	220 Cornwall Windsor	18.00	18.00		I	18.00
Levin Lester M.	Windsor Annex Hall	36.00	18.00	18.00	I	36.00
Linton Miss J.	Windsor Annex Hall	36.00	18.00	18.00	I	36.00
Grange Gladys E.	Windsor Annex Hall	10.00	10.00		I	10.00
Griffin Miss M.	Windsor Annex Hall	36.00	18.00	18.00	I	36.00
Griffiths Helena	Windsor Annex Hall	10.00	10.00	Spec.		10.00
Graham Mrs. H.	29 Macdonald Windsor	10.00	5.00	5.00	I	10.00
Graham St. E.	288 Huron Windsor	20.00	10.00	10.00	I	20.00
Lilburnson Thos. Wm.	Windsor Annex Hall	10.00	10.00		I	10.00
Lundy Mary	Windsor Annex Hall	18.00	18.00		I	18.00
Lordon Helen	Windsor Annex Hall	5.00	5.00	Spec.		5.00

1906-7

NAME. ADDRESS. Amount. First Instalment. Second Instalment. Third Instalment. TOTAL.

NAME. ADDRESS. Amount. First Instalment. Second Instalment. Third Instalment. TOTAL.

NAME.	ADDRESS.	Amount.	First Instalment.	Second Instalment.	Third Instalment.	TOTAL.
-------	----------	---------	----------------------	-----------------------	----------------------	--------

NAME.	ADDRESS.	Amount.	First Instalment.	Second Instalment.	Third Instalment.	TOTAL.
-------	----------	---------	----------------------	-----------------------	----------------------	--------

H

1902-3

NAME.	ADDRESS.	Amount.	First Instalment.	Second Instalment.	Third Instalment.	TOTAL.
Haincks C. M.	38 Madison Ave	18.00	18.00	—	—	18.00
Harley A. M.	61 Busssey Ave Brantford	36.00	20.00	16.00	I	36.00
Henderson C. S. D.	81 Cedar St London	18.00	18.00	—	I	18.00
Hewitt S. A. C.	273 St George St Brookholm	18.00	—	—	I	18.00
Hewley Miss H.	79 St Joseph St	18.00	6.00	2.00	Spec	8.00
Harris Fred B. K.	15 Bismarck	36.00	18.00	18.00	III	36.00
Hamilton Frank	11 Brunswick St Mary	18.00	—	18.00	III	18.00
Hamilton Margaret	Peterboro 63 St Nicholas	36.00	18.00	15.00	II	36.00
Holmes C. P.	Newark 7 Kentville	20.00	Hamilton Conf.	—	—	20.00
Hopkins C. H.	St Ann St Ann	20.00	Conf	—	—	20.00
Hayer A. C.	73 Guy St Port Dover	20.00	Montreal	—	—	20.00
Hughes J. J.	54 Hayden Worcester	20.00	—	—	—	20.00
Hughes Robert	69 Guy St Wallingford Park	20.00	18.00	—	—	20.00
Hardy Francis	48 Wood St Oakwood	20.00	20.00	—	—	20.00
Hornby Robert	Hamilton	36.00	18.00	18.00	I	36.00

1903-1904

NAME.	ADDRESS.	Amount.	First Instalment.	Second Instalment.	Third Instalment.	TOTAL.
Hiddle Ben. L.	Stearns 16 Guy St	20.00	London Conf.	—	—	20.00
Hammill Miss M.	Annex Park Hill	36.00	36.00	—	I	36.00
Hall Wilbert	278 Spadina Norwich	36.00	36.00	—	I	36.00
Hartley Annie	385 Church Steele	11.00	5.00	5.00	Spec	11.00
Harrison Mabel	Annex Steele	18.00	18.00	—	—	18.00
Henderson C. B.	15 Guy St St Nicholas	18.00	18.00	—	—	18.00
Hewitt David	273 St George St Ann	—	—	—	—	Spec
Harley A. M.	Brantford 81 Busssey Ave	36.00	18.00	18.00	II	36.00
Haincks C. M.	38 Madison	18.00	18.00	—	—	18.00
Hayes E. J.	—	2.00	2.00	—	—	Spec 2.00
Harris F. W. H.	15 Bismarck St Ann	36.00	18.00	18.00	II	36.00
Holmes Joseph H.	38 Cumberland Oakwood	18.00	9.00	9.00	II	18.00
Hardy Francis	125 Rose Ave	36.00	18.00	18.00	II	36.00
Histop W. J.	200 Lakeside Brussels	36.00	18.00	18.00	I	36.00
Hunter James	24 Guy St Georgetown	20.00	London Conf.	—	—	20.00
Holmes C. P.	770 Cumberland Port Dover	20.00	Hamilton	—	—	20.00
Hayer A. C.	73 Guy St	20.00	Montreal	—	—	20.00
Haincks W. W.	Depot Peterboro	3.00	3.00	—	—	Spec 3.00
Hamilton Margaret	5 March St	36.00	18.00	18.00	III	36.00
Hamilton C. B.	Brussels	18.00	18.00	—	—	18.00

1904-1905.

NAME.	ADDRESS.	Amount.	First Instalment.	Second Instalment.	Third Instalment.	TOTAL.
Harris W.H.	Newcardine					London
Hiles W.H.	657 Yonge St.	20.00				20.
Hunter J.E.	26 Bazaar St.	20.00				20.
Hedley J.B.	445 Gloucester	20.00				Hamilton. 20
Hill Mabel M.	57 Langley Ave	36.00	18.00	18.00	I	36.00
Hill Mary E.	"	36.00	18.00	18.00	I	36.00
Hurlburt Mabel M.	Mitchell Russell Newmarket	36.00	36.00		I	36.00
Hunter R.H.	197 Colborne St. Grove	36.00	18.00	18.00	I	36.00
Hubert Edna J.	20 Wood St. St. Thomas	36.00	18.00	18.00	I	36.00
Hill Fred Edna.	679 Victoria St. Grove	36.00	18.00	18.00	I	36.00
Hamilton Elizabeth.	Russell Hall Newmarket	36.00	18.00	18.00	I	36.00
Hurley R.H.	445 Bazaar Ave	36.00	18.00	18.00	III	36.00
Henderson C.B.	Leeds	18.00	18.00		III	18.00
Hewitt S.A.	Orangeville	18.00	18.00		III	18.00
Hicks C.H.	38 Madison Ave	18.00	18.00		II	18.00
Hamilton J.A.B.	11 Brunswick Peterboro	18.00	18.00		II	18.00
Hamilton Mary M.	5 North St. Peterboro	36.00	18.00	18.00	II	36.00
Holmes C.F.	Sharon Lake Glebe	10.00	10.00			10.00
Harrison Mabel.	Russell Hall 16 Colborne	18.00	18.00			Deca. 18.00
Hyland Irene	Russell Hall	36.00	12.00	12.00	I	36.00
Hishop J.B.	200 Waterloo	36.00	18.00	18.00	I	36.00
Humphrey Miss J.						
Hunter Miss Emma	Peterboro Russell Hall	10.00	10.00		I	10.00
Hall William	Parkville Leeds	36.00	18.00	18.00	I	36.00
Harris C.L.	16 Kensington Thy.	18.00	18.00		III	18.00
Habbert Rachel	Port Williams	18.00				18.00

1904-05.

NAME.	ADDRESS.	Amount.	First Instalment.	Second Instalment.	Third Instalment.	TOTAL.
Harris Mrs	School of Ex. in	3.00	3.00			Spec. 3.00
Humphrey Miss J.	"	3.00	3.00			3.00
1905-6.						
Hayes B.C.	30 Bazaar St	20.00				London 20.00
Harriett H.H.	"					
Helle H.L.	Newcardine 557 Yonge St	20.00				20.00
Harrold H.M.	30 Bazaar St.	20.00				Hamilton I 20.00
Hunter J.E.	"					
Honey H.E.	69 Bazaar St. Peterboro	20.00				Barry 20.00
Hemmingway H.E.	199 Major St	36.00	36.00		I	36.00
Hayes Ethel M.	Davenport Pl.	36.00	18.00	18.00	I	36.00
Hayes Ivan D.	Leeds	36.00	18.00	18.00	I	36.00
Looming J.E.	Leeds 3 Kitchener Ave.	?				I
Hall Ida C.M.	57 Langley	36.00	18.00	18.00	I	36.00
Hall Lenah B.	"	36.00	18.00	18.00	I	36.00
Hurlburt Mabel	Mitchell Russell Hall	36.00	18.00	18.00	II	36.00
Hunter E.J.	Peterboro Russell Hall	10.00	10.00		II	10.00
England Gene	72 St. Mary St. Peterboro	10.00	10.00		III	10.00
Hidred Miss Edna.	126 Howard Ave. Leeds	36.00	18.00	18.00	I	36.00
Hocell Albert	92 Bazaar St. 75 Yonge St.	31.00	15.50	15.50	III	31.00
Hammill V.M.	Russell Hall 300 St. Mary St.	36.00	18.00	18.00	III	36.00
Henderson C.D.	50 Port Hope Leeds	18.00	18.00		II	18.00
Harley C.M.	61 Leeds Ave.	36.00	36.00		IV	36.00
Harris Miss Jan R.	450 Papellu	3.00	3.00			Spec. 3.00
Harris " B.H.	"	8.00	8.00			8.00

1905-6.

NAME.	ADDRESS.	Amount.	First Instalment.	Second Instalment.	Third Instalment.	TOTAL.
Harrell, Miss M. B.	Alexandra Place, Moores Gap	24 <sup>00</sup>	8.50	8.50	8.50	—
Kapkins, M. L.	Armistead Hall	7.00	7.00			7.00
Stamer, Eva G.	155 Grace St. Greiner	12.00	12.00			12.00
Halbert, Edmund J.	Brookman Crawfordsville	36.00	18.00	18.00		36.00
Hemmett, Mrs. Carl	Winnfield, W. Va. Newport, W. Va.	18.00	9.00	9.00		18.00
Hawthorn, R. C.	121 Cumberland Cranville	36.00	18.00	18.00		36.00
Hewitt, David G.	224 Denver Post Humboldt	18.00	9.00	9.00		18.00
Harris, George G.	165 S. Main St. Humboldt	18.00	9.00	9.00		18.00
Hughes, J. S.		—	—	—	—	—

1906-7

NAME. ADDRESS. Amount. First Instalment. Second Instalment. Third Instalment. TOTAL.

J  
U  
L  
I  
E





J 1902-3

NAME.	ADDRESS.	Amount.	First Instalment.	Second Instalment.	Third Instalment.	TOTAL.
Jackson Clyde	13 Yorkville Keddyway	36.00	18.00	18.00	II	36.00
Jolliffe E. H.	70 St Joseph Pelleboro	18.50	7.75	7.75	IV	15.50
Jolliffe Thos. R. H.	21 Sultan St 1st Ave	18.00	9.00	9.00	IV	18.00
Jeffrey Miss Mary	8 Prince Arthur Toronto	18.00	9.00	9.00	III	18.00
Irvine E. C.	40 Byron St St Marys	36.00	18.00	18.00	IV	36.00
Jackson W. E.	77 Sullivan Newmarket	36.00	18.00	18.00	II	36.00
Johnston Miss M.	70 Grand Ave 82 Grand Ave 90 Grand Ave St Marys	6.00	6.00	—	Spec	6.00
Jickling Miss J.	St Marys	36.00	—	—	II	36.00
Jameson Miss	Hamilton 51 Byron St	10.00 10.00	10.00	—	II	10.00
Jolliffe Char. R.	Rockwood	36.00	18.00	18.00	III	36.00
Jolliffe R. E.	Rockwood (app. 1/2 yr) 18.00	18.00	5.00	18.00	IV	23.00
Jackson P. E.	56 Bonden St 652 Bonden St. Lond.	18.00	9.00	9.00	IV	18.00

1903-1904

NAME.	ADDRESS.	Amount.	First Instalment.	Second Instalment.	Third Instalment.	TOTAL.
James Chas. E.	Perth 24 Byron St.	36.00	18.00	18.00	I	36.00
Johnston R. B.	469 Barchart Clinton	36.00	18.00	18.00	I	36.00
Johnston E. J.	25 Byron St Detroit	36.00	18.00	18.00	I	36.00
James W. E. J.	37 Byron St Keddyway	190.00 10.00	—	10.00	III	10.00
Jackson Clyde	84 Robert St	36.00	18.00	18.00	III	36.00
Jeffery Mary M.	8 Prince Arthur 19 Brindall Ave	18.00	9.00	9.00	IV	18.00
Jickling C. H.	St. Marys	36.00	—	—	III	36.00
Jolliffe C. J. H.	Rockwood St. Marys	10.00	5.00	5.00	IV	10.00
Johnston J. H.	81 Byron St	20.00	—	—	—	20.00
James W. E.	Detroit 37 Byron St.	20.00	—	—	—	20.00



N.

1902-3

NAME.	ADDRESS.	Amount.	First Instalment.	Second Instalment.	Third Instalment.	TOTAL.
Heast Walter	19 Henry St St Juis	36.00	18 <sup>00</sup>	18 <sup>00</sup>	II	36.00
Keays Christ. H.	25 Wood St Londray	36.00	36 <sup>00</sup>	-	I	36.00
Keays Mrs M. B.	46 Wells St Dundas	36.00	18 <sup>00</sup>	-	II	36.00
Kirby Walter J.	73 Dufferin	36.00	18 <sup>00</sup>	18 <sup>00</sup>	I	36.00
Kerr Lane M. B.	28 Robert 63 St Mich. la.	18.00	18 <sup>00</sup>	-	II	18.00
Knight J. M. P.	Grantbrook 90 Mainland	20.00	Londray	20.00		20.00
Kennedy S. B.	Orangeville	20.00	Mainland	20.00		20.00

1903-1904

NAME.	ADDRESS.	Amount.	First Instalment.	Second Instalment.	Third Instalment.	TOTAL.
Keays Mrs M. B.	Dundas Annecly Hall	10.00	10.00	-	Spec.	10.00
Kelly Chas. B.	Gravelly 240th Bond	36.00	36.00	-	I	36.00
Keays E. M.	Londray Annecly Hall	36.00	36.00	-	II	36.00
Kerley G. J.	73 Dufferin Grantbrook	36.00	18.00	18.00	I	36.00
Knight John P.	120 Cumberland	20.00	Londray	20.00		20.00
Kerley S. L.	Murray 114 Yorkville	20.00	Londray	20.00		20.00
Kinnear Harry H.	Dundas Not 20.00 20.00	36.00	18.00	-	I	18.00
Kerley H. J.	40 Wood St	36.00	18.00	18.00	I	36.00



L

1902-3

NAME.	ADDRESS.	Amount.	First Instalment.	Second Instalment.	Third Instalment.	TOTAL.
Luck E. L.	51 Czar St Deseronto	36.00	18.00	18.00	II	36.00
Lindsay B. A.	16 Elm St Bellefleur	36.00	20.00	16.00	III	36.00
Lloyd Miss B. C.	38 Division	18.00	9.00	9.00	III	18.00
Lindsay Miss B. C.	41 Roswell Ave Caledon East	36.00	18.00	18.00	IV	36.00
Lane Milton C.	57 Marlborough 120 Cumberland	18.00	9.00	9.00	II	18.00
Lane A. C.	Markham	20.00	Toronto Conf.			20.00
Lindsay F. W.	10 St Joseph Grafton	20.00	London			20.00
Lear Miss Emma	34 Henry St Windsor	18.00	1.00	1.00	I	1.50

1903-1904

NAME.	ADDRESS.	Amount.	First Instalment.	Second Instalment.	Third Instalment.	TOTAL.
Shannon Mabel B.	La Verne Annisley Hall	36.00	36.00	-	I	36.00
Lawrence Annie B.	Beaufort 42 Bryn St.	20.00	10.00	10.00	I	20.00
Lloyd Mabel J.	Chesley 100 W. Carl	36.00	18.00	18.00	I	36.00
Luck E. L.	Deseronto 330 Church St	36.00	18.00	18.00	III	36.00
Lloyd Willie E. O.	Markham	18.00	9.00	9.00	III	18.00
Lindsay Beulah	Provincial Annisley Hall	36.00	18.00	18.00	IV	36.00
Lane Milton C.	Commerce 60 St. Mary	18.00	18.00	-	II	18.00
Lindsay F. W.	Manfield 69 Czar St	20.00	Toronto Conf.			20.00
Lawrence Mabel	Halton 25 Cumberland	20.00	-	-	-	20.00
Lane Austin E.	Markham 120 Cumberland	20.00	-	-	-	20.00
Lindsay F. W.	Grafton 42 Czar St	20.00	London			20.00
Lindsay Frank R.	Windsor 24 Czar	23.00	23.00	-	-	23.00

1905-6

Lawrence L. L.	St. Joseph 11 St. Joseph	20.00	Toronto			20.00
Lamb J. B.	Manfield 653 Yorkville	20.00	-			20.00
Luce J. Albert	King 14 Logan St	20.00	I			20.00
Lovering H. L.	G. Chumley 36 Czar St	20.00	-			20.00
Lindsay F. W.	Grafton 26 Czar St	20.00	London			20.00
Logan C. F.	309 Huron St Caledonia	20.00	-			20.00
Laird F. H.	Provincial Annisley Hall	18.00	9.00	9.00	II	18.00
Ley Edna Mabel	Provincial Annisley Hall	36.00	36.00	-	II	36.00
Landon Miss M. B.	Provincial Annisley Hall	36.00	36.00	-	III	36.00
Luck E. L.	Deseronto 51 Czar St	36.00	36.00	-	IV	36.00
Lovering F. M. C.	Commerce 36 Czar St	36.00	18.00	18.00	II	36.00
Lewis Miss Nora	Halton Palmy Beach	36.00	Schp.			36.00







M

19023

NAME.	ADDRESS.	Amount.	First Instalment.	Second Instalment.	Third Instalment.	TOTAL.
Miller E. A.	120 Cumberland W. Hill House	36.00	18.00	18.00	III	36.00
Miller W. & C.	5 Byron St Dublin	36.00	18.00	18.00	II	36.00
Miller John. Dwyer	538 Church Walfrid	36.00	18.00	18.00	III	36.00
Miller Stanley G.	414 Sherbourne	36.00	18.00	18.00	I	36.00
Manning R. J.	132 Roxborough Selwyn	36.00	-	-	I	36.00
Mills R. W.	59 Rose Ave 398 Goyette	36.00	18.00	18.00	II	36.00
Mark Clarence	Lansbury 36.00	36.00	18.00	5.00	I	23.00
Morris G. A.	32 Byron St Stoneybriar	36.00	36.00	-	I	36.00
Morrison M. G.	30 Robert St	36.00	36.00	-	I	36.00
Moore W. H.	48 Hayden Rossmount	-	-	-	-	18.00
Macfarlane Percy	9 M. Kenyons 18.00	18.00	-	-	Spec	18.00
Marchant B. N.	57 Byron St Dunelmere	36.00	18.00	18.00	III	36.00
Mathood H. S.	411 St. James St Kathleen	36.00	18.00	18.00	I	36.00
Miller A. D.	54 Elm St Newmarket	20.00	For sale	20.00		20.00
Moorhouse C. J.	133 Goyette Shilland	20.	London	20		20
Moorhouse C. J.	12 North St	20.		20.		20.
Morgan E. W.	Connaught 20.	20.	Bay	20.		20.
Mearns R. P.	54 Byron St Braunford	18.00	18.00	-		18.00
Morgan Thos. H.	St. Peter's Hill	4.00	4.00	-		4.00
Moore E.		3.00	3.00	-		3.00

1903-1904

NAME.	ADDRESS.	Amount.	First Instalment.	Second Instalment.	Third Instalment.	TOTAL.
Marrace E. J.	170 Moybrough Aston	36.00	18.00	18.00	I	8.00
Moore Ed. James	7 Gloucester St Hamilton	36.00	18.00	18.00	I	36.00
Moore Ernest J.	50 Robert St Hamilton	36.00	18.00	18.00	I	36.00
Miles Marwood	1000 St. James Glasgow	36.00	36.00	-	I	36.00
Morley G. E.	318 Buckhurst 572 Church St	36.00	18.00	18.00	I	36.00
Murphy James	1000 St. James Glasgow	36.00	36.00	-	I	36.00
Murdorf B. C.	365 Bellisay	36.00	18.00	18.00	I	36.00
Manning R. J.	132 Roxborough	36.00	18.00	18.00	II	36.00
Mulle S. G.	400 Sherbourne Lafayette	36.00	18.00	18.00	II	36.00
Mathood H. S.	8 Avon Ave	36.00	18.00	18.00	I	36.00
Mark Clarence	46 Sussex Ave	36.00	18.00	18.00	I	36.00
Mathood H. S.	400 Sherbourne Newbridge	31.00	10.00	21.00	III	31.00
Miller John. Dwyer	7 Gloucester White Rose	36.00	18.00	18.00	II	36.00
Miller E. A.	120 Cumberland Saul Grove	36.00	18.00	18.00	II	36.00
Marshall D. H.	St. Mary's Hill Newmarket	36.00	18.00	18.00	II	36.00
Middleton H.	1700 St. James London	20.00	For sale	20.00		20.00
Madden M. D.	119 Yorkville	20.00	London	20.00		20.00
Moorhouse C. J.	655 Goyette	20.00		20.00		20.00
" " C. J.		20.00		20.00		20.00
Masters A. H.	Brussels	20.00	Bay	20.00		20.00
Morgan E. W.	Connaught 288 Huron St	20.00		20.00		20.00

1904-1905

NAME.	ADDRESS.	Amount.	First Instalment.	Second Instalment.	Third Instalment.	TOTAL.
Miller A. B.	Newmarket 7 Howcharles	20.00	Toronto Cany.			10.
Minden W. B.	Bassels	20.00	London			20.
Miranders R. H.	Osencee	20.00	Bay			20.
Morgan E. B.	288 Huron St.	20.00	J. C. Williams			20.
Marshall G. B.	258 Huron St.	36.00	10.00	18.00		36.00
Mason Percy J.	68 1/2 Spadina Ave.	36.00	18.00	18.00		36.00
Morris S. L.	177 Humberway	36.00	18.00	18.00		36.00
Moulton G. S.	88 Collesey Boulevard	36.00	18.00	18.00		36.00
Moulton E. W.	73 Gray St.	36.00				36.00
Moulton Alex	37 Cumberland	36.00	Sept			Sept
Miller J. Watson	141 St. Patrick P. O. Box	36.00				36.00
Markland Chas. H.	127 32 Dundas St. W.	20.00	18.00			20.00
Miles Marion B.	Barneslyth Ave	36.00	36.00			36.00
Macfarlane G. B.	98 1/2 Kensington Burlington	18.00	9.00	9.00		18.00
Moore G. P.		36.00	18.00	18.00		36.00
Mark G. B.	24 Pucey Ottawa	36.00	18.00	18.00		36.00
Moore G. J.	58 Collix St.	36.00	18.00	18.00		36.00
Miel S. G.	400 1/2 Beaufort	31.00				31.00
Manning H. J.	137 1/2 Beaufort Hastings	36.00	11.50	18.50		31.00
Mathew H. S.	111 Collesey St. Newmarket	36.00	18.00	18.00		36.00
Marden Mrs. S. L.	370 Spadina	36.00	18.00	18.00		36.00
Matheson Thos	57 Huron St.					

1905-6.

NAME.	ADDRESS.	Amount.	First Instalment.	Second Instalment.	Third Instalment.	TOTAL.
Miller A. D.	Newmarket 7 Howcharles	20.00			Toronto	20.00
Madden M. D.	567 Church St. London	20.00			III	20.00
Morgan E. B.	57 Gray St.	20.00			Bay	20.00
Marshall, A. E.	50 Hayden St. London	20.00			B.C.	20.00
Manning H. J.	8 Brown Av.	18.00	18.00		I	18.00
Madden Miss Pearl	27 Laurel St. W.	36.00	36.00		I	36.00
MacLaren Miss W. H.	58 Hillside Southview	36.00	18.00	18.00	I	36.00
Marshall G. B.	31, 63 Gray St.	36.00	18.00	9.50	I	27.50
Mattar J.	7 Kirkby Toronto	36.00	18.00			
Marley Geo. C.	44 Gray St.	36.00	18.00	18.00	I	36.00
Mason Miss Percy	607 Spadina Av.	36.00	18.00	18.00	II	36.00
Macfarlane G. D.	97 Kensington in Orange St.	18.00	18.00		II	18.00
Miles Miss M. C.	Annexes Hall London	36.00	36.00		III	36.00
Mark G. B.	16 Alton St.	36.00	18.00	18.00	II	36.00
Marleas Miss J. E.	369 Bloor Ave.	36.00	15.00	15.00	10.00	45.00
Mills G. J.	59 Glen Rd.	36.00	18.00	18.00	II	36.00
Manning P. J.	152 Birmingh Ottawa	31.00			II	31.00
Markland, Chas. H.	Annexes Hall London	36.00	18.00	2.00	III	20.00
MacLaren, Miss G. J.	80 Hillside Ottawa	36.00	4.00	4.00	Spec	4.00
Mary G. J.	50 Hayden Ottawa	36.00	18.00	18.00	III	36.00
Macfarlane, Mrs. D.	97 Kensington London	18.00	18.00	3.00	II	13.00
Mathews G. J.	101, Mallard St. Thames Falls	36.00	18.00	18.00	I	36.00
Morden Miss G.	40 Carlton Ottawa	36.00	18.00	18.00	II	36.00
Manning H. J.	338 James St. Ottawa	36.00	18.00		I	
Meils Miss G. J.	84 Pleasant Ottawa	22.00	11.00	11.00	Spec	22.00
Miller	111 Collesey Newmarket	36.00	36.00		I	36.00
Mathew H. S.	554 Bloor St. W. Toronto	23.00			III	23.00
Mayer G. C.	45 Gray St. Toronto				I	Sept

NAME.	ADDRESS.	Amount.	First Instalment.	Second Instalment.	Third Instalment.	TOTAL.
Mr Haughlin Mrs	31 Major St	20.00 28.00	20.00	—	—	20.00
Mr Hendry Miss M <sup>o</sup>	38 Sturton	6.00	6.00	—	—	6.00
Mr Henry John	29 Cornhill	36.00	18.00	18.00	—	36.00
Mr Elkanagh G	34 Regent St	36.00	18.00	18.00	—	36.00

1903-1904

NAME.	ADDRESS.	Amount.	First Instalment.	Second Instalment.	Third Instalment.	TOTAL.
Mr Grace Mrs Shaw	Stratford Amesley Place	36.00	18.00	18.00	—	36.00
Mr Macfarlane Walter	9 Mr Henrys Ct	9.00	5.00	4.00	—	9.00
Mr Bell and J. H. B.	2 Leonard Ave	36.00	18.00	18.00	—	36.00
Mr Macfarlane J. H.	9 Mr Henrys Ct	18.00	9.00	9.00	—	18.00
Mr Haughlin Haron	Amesley Place 38 Sturton	20.00	20.00	—	—	20.00
Mr Elkanagh G	34 Regent St	36.00	18.00	18.00	—	36.00
Mr Cullough West	172 St Edmunds	15.00	15.00	—	—	15.00
Mr Lamsick R. G.		20.00	10.00	10.00	—	20.00
Mr Hochler Mrs G. F.		3.00	3.00	—	—	3.00

1904-1905

NAME.	ADDRESS.	Amount.	First Instalment.	Second Instalment.	Third Instalment.	TOTAL.
Mr Cornish A. J.	Gravebridge 60 St George St Edgely Wood	20.00	—	—	—	20.00
Mr Henrys G. B.	Jara	20.00	—	—	—	20.00
Mr Donald Ward	Amesley Place Corner	10.00	10.00	—	—	10.00
Mr Cobbin Walter	55 Sandstone	36.00	18.00	18.00	—	36.00
Mr Grace Warden		36.00	18.00	18.00	—	36.00
Mr Macfarlane J. H.	9 Mr Henrys Ct	15.00	8.00	7.00	—	15.00
Mr Haughlin Haron	Amesley Place 38 Sturton	20.00	20.00	—	—	20.00

1905-6

NAME.	ADDRESS.	Amount.	First Instalment.	Second Instalment.	Third Instalment.	TOTAL.
Mr Henrys G. B.	Witchell 33 St Mary	20.00	—	—	—	20.00
Mr Donald W.	Gravebridge 8 Brown Ave	20.00	—	—	—	20.00
Mr Roberts L. G.	or Hayden St	20.00	—	—	—	20.00
Mr Henrys S. D.	16 Regent St Town	36.00	36.00	—	—	36.00
Mr Donald M. S.	Amesley Hall Corner	10.00	—	—	—	10.00
Mr Gibson H. W.	11 Wood St Stratford	36.00	18.00	18.00	—	36.00
Mr Grace Mrs M.	Amesley Hall Corner	36.00	18.00	18.00	—	36.00
Mr Duane J. G. H.	18 Guy St	20.00	10.00	10.00	—	20.00



N

1902-3

NAME.	ADDRESS.	Amount.	First Instalment.	Second Instalment.	Third Instalment.	TOTAL.
Dear William P	110 Essex St St Marys	31.00	15.00	16.00	IV	31.00
Neville Howard	57 Feabilla Warwick					19.
Maryent David B	24 Alexander Mielbrook	36.00	18.00	18.00	II	36.00
Neilly Miss H.	448 Barchard	3.00	1.00	1.00	Spec	3.00

1903-1904

Worsworthy Miss	St Thomas Muelbrook	36.00	18.00	18.00	I	36.00
Maryent B. H.	48 Hayden	36.00	15.00	15.00	II	36.00
Neilly Miss	School of Hygiene Longwell	8.00	8.00		Spec	8.00
Mancetwee Herbertell	18 St Marys St	18.00	18.00		I	18.00
Maryent Miss	School of Hygiene	3.00	3.00		Spec	3.00

1904-1905

NAME.	ADDRESS.	Amount.	First Instalment.	Second Instalment.	Third Instalment.	TOTAL.
Mancetwee H.	Longwell 29 Feabilla St	36.00	18.00	18.00	I	36.00
Worsworthy Miss	St Thomas Longwell	36.00	18.00	18.00	II	36.00
Maryent David B.	Mielbrook	36.00	18.00	18.00	III	36.00

1905-6

Newton G. H.	Stratford	36.00	18.00	18.00	I	36.00
Mancetwee W. H.	10 St Joseph Longwell	36.00	18.00	18.00	I	36.00
Melville P. H.	Greenbank Longwell	18.00			II	18.00
Mancetwee W. H.	10 St Joseph Longwell	36.00	18.00		II	18.00
Maryent Miss O.	St Thomas Annuley Hall	36.00	18.00	18.00	III	36.00
Maryent B. H.	Longwell	36.00	18.00	18.00	II	36.00
Maryent Ethel W. (The Puff)		8.00	8.00		Spec	8.00

1906-7



0.

1902-3

NAME.	ADDRESS.	Amount.	First Instalment.	Second Instalment.	Third Instalment.	TOTAL.
Ogden Miss V. B.	154 Spadina Ave	8.00	3.00	—	Spec. 3.00	
Ogden Miss Bertha	348 Spadina Ave	11.00	11.00	—	—	11.00
Caterhout J. H.	7 Woodlawn Ave	20.00	London bond			20.00
Chell J. B.	Victoria, B.C.	20.00	B.C. Bond			20.00

1903-04

NAME.	ADDRESS.	Amount.	First Instalment.	Second Instalment.	Third Instalment.	TOTAL.
O'Neil J. P.	75 Bross St Shorlton	20.00	B.C. Bond			20.00
Owen Francis	206 Parley Ave	18.00	2	18.00	—	18.00

1904-1905

NAME.	ADDRESS.	Amount.	First Instalment.	Second Instalment.	Third Instalment.	TOTAL.
Owen A. B.	Thornston 58 Ogden St	20.00	Toronto bond			20.00
Seakam J. H.	154 Major St	36.00	18.00	18	—	36.00
Oyarva A. M.	Stokerau Japan 51 Bross St	20.00	11.00 20.00 11.00			11.00
O'Flynn James	Bellewille Brynestown	15.00	15.00	—	Spec	15.00
Owen Francis	Thornston 150 Cumberland	36	18.00	18.00	—	36.00

1905-6

NAME.	ADDRESS.	Amount.	First Instalment.	Second Instalment.	Third Instalment.	TOTAL.
Owen A. B.	Thornston 52 Bross St	20.00	Toronto bond			20.00
Osborne H. R.	67 Glen 44 Bross St	20.00	London			20.00
Chell J. B.	Barris	—	B.C.			—
Ochley J. H.	125 Markham	18.00	18.00	—	—	18.00
Oldham Jas. H.	124 Major	36.00	18.00	18.00	—	36.00
Owen Miss R. M. E.	209 Delaware Thornston	5.00	2.50	2.50	—	5.00
Owen Francis	52 Ogden Thornston	36.00	18.00	18.00	—	36.00
Oyarva A. M.	Japden	20.00	20.00	—	—	20.00





P

1902-3

NAME.	ADDRESS.	Amount.	First Instalment.	Second Instalment.	Third Instalment.	TOTAL.
Pearson Robert	10 March St Ethel	36.00	18.00	18.00	III	36.00
Parker C.B.	43 St James St	36.00	-	-	III	Schp.
Potts Miss C.H.	8 Church St Lovers	-	-	-	III	-
Potter J.B.	154 Howland St Gorgetown	18.00	9.00	9.00	III	18.00
Patterson C.G.	13 Elgin Ave	20.00 38.00	18.00	2.00	I	20.00
Patterson C.	70 Madingle	5.00	5.00	-	Spec.	5.00
Peterson G.	121 Howland Wellesville	36.00	36.00	-	III	36.00
Perley S.W.	709 Spadina Karronsmith	24.00	24.00	-	III	-
Proctor Margarett	115 Howland Parma	20.00	20.00	-	I	20.00
Phinister J.	681 Buckhurst Bradford	20.00	20.00	-	Comp.	20.00
Patterson Miss. Ethel	13 Elgin Ave City	23.00	20.00	3.00	II	23.00
Paul Miss C.G.	24 Grosvenor St Parma	3.50	3.50	-	-	3.50
Parker B.C.	McKelliff	7.00	7.00	-	-	7.00
Phiep G.	-	5.00	5.00	-	-	5.00

1903-1904

NAME.	ADDRESS.	Amount.	First Instalment.	Second Instalment.	Third Instalment.	TOTAL.
Paul Miss Helen	24 Grosvenor Barrie	10.00	10.00	-	I	10.00
Parker J. Harold	20 Benson Ave	36.00	18.00	18.00	I	36.00
Proctor Margarett	Armsley Place	10.00	10.00	-	II	10.00
Patterson Miss G.	13 Elgin Ave	10.00	10.00	-	II	10.00
Patterson S.H.	13 Wellesville	36.00	20.00	16.00	III	36.00
Peterson Greta	Armsley Place Ethel	36.00	36.00	-	II	36.00
Pearson Robert	583 1/2 Church Georgetown	36.00	18.00	18.00	II	36.00
Potter Jessie B.	Armsley Pl. Harrowsmith	18.00	9.00	9.00	II	18.00
Perley S.W.	654 Spadina	18.00	18.00	-	IV	18.00
Parker Chas. B.	43 St James St Schp.	-	-	-	IV	Schp.
Porter Mrs C.F.	121 Howland Sly Hill	13.00	7.00	6.00	-	13.00
Phinister James	Bradford 125 College	20.00	20.00	-	Comp.	20.00
Pickering Thos	77 B. Hart St Sly Hill	20.00	-	-	-	20.00
Phiep Miss School	Armsley Pl. Parma	13.00	13.00	-	Spec.	13.00
Peltier Rhoda	" "	5.00	5.00	-	-	5.00
Potts Miss Edna	Armsley Pl.	-	-	-	Spec.	-







R

1902-3

NAME.	ADDRESS.	Amount.	First Instalment.	Second Instalment.	Third Instalment.	TOTAL.
'Anckey, Miss M.	198 Wellesley	5.00	2.50	2.50	Spec	5.00
'Robertson H. W.	60 Greenville Harrisburg	36.00	36.00	-	II	36.00
'Raukin A. B.	141 Park Road	18.50	18.50	-	II	18.50
'Rees L. P.	248 Lippincott	36.00	18.00	18.00	IV	36.00
'Ruddell E. V.	164 Cumberland Oneta	36.00	18.00	18.00	II	36.00
'Rutherford J.	7 Woodlawn	20.00	Toronto Group			20.00
'Rivers G. W. W.	119 Yorkville London	20.00	London			20.00
'Robins J. W.	45 Wood St Fort Howard	20.00	Maritima			20.00
'Rogers A. S.	Fredericton St. John's	20.00	N. Scotia			20.00
'Rogers, Mrs. M. H.	Cedarville	3.00	1.50	1.50	-	3.00
'Robinson Miss J.	111 Pull Off.	3.00	3.00	-	-	3.00

1903-1904

NAME.	ADDRESS.	Amount.	First Instalment.	Second Instalment.	Third Instalment.	TOTAL.
'Wachman S. W.	Helleville 654 Beach Ave Woolacomb	Spec	-	-	I	Spec
'Richardson L. W.	32 Garret St. Marys		-	-	I	Spec
'Rice Mrs. Rachel	Parisville Harrisburg	36.00	36.00	-	II	36.00
'Robinson H. W.	177 N. Millan Oneta	36.00	36.00	-	III	36.00
'Ruddell E. V.	164 Cumberland	36.00	18.00	18.00	III	36.00
'Raukin A. B.	141 Park Road	18.00	18.00	-	IV	18.00
'Rutledge Joseph H.	Elmville	18.00	9.00	9.00	I	18.00
'Rutherford J.	Exhibition	20.00	Toronto Group			20.00
'Reddick C. S.	Ballbridge 119 Yorkville	20.00	Bay			20.00
'Rogers A. S.	Fredericton 99 Hazelton St. John's	20.00	N. S.			20.00
'Ruff W. H.	101 Washington	6.00			Spec	

1904-1905

NAME.	ADDRESS.	Amount.	First Instalment.	Second Instalment.	Third Instalment.	TOTAL.
Rutherford J. J.	Eglarston	20.00	Toronto			20.00
Reaney G. J. D.	Buryway	20.00	Hamilton			20.00
Redick G. A.	Waldridge	20.00	Fay			20.00
Roland G. C.		20.00				20.00
Richardson H. W.	Wallerburg	36.00	Schp	I	Schp	
Raymer G. C.	Toronto Junction	36.00	36.00	I	36.00	
Ratlidge J. Hester	Woodstock	18.00	9.00	9.00	II	18.00
Rathbone H. W.	57 Hazelton Ave.	36.00	Schp	II	Schp	
Rice Miss H. C. A.	St. Mary's	36.00	18.00	18.00	III	36.00
Riverson E. Victor	31 Broomfield St.	36.00	18.00	18.00	II	36.00
Robertson Mrs. M. A.	120 Cumberland	10.00	10.00		Deca	10.00
Robertson H. W.	St. Mary's	36.00	36.00		IV	36.00
Rogers Miss E. M.	477 Mt. Pleasant	36.00			Deca	36.00

1905-6

Rutherford J. J.	Buryway	20.	Toronto			20.00
Reaney G. J. D.	48 Hayden	20	Hamilton			20.00
Redick G. A.	Waldridge	20	Fay			20.00
Roland G. C.	76 Bury St.	20.				20.00
Rathbone H. W.	St. Mary's	36.00	36.00	I	36.00	
Raymer G. C.	57 Cumberland	20.00	10.00	10.00	I	20.00
Ratlidge J. Hester	St. Mary's	36.00	18.00	18.00	II	36.00
Richardson H. W.	Wallerburg	36.00	Schp	III	Schp	
Ratlidge J. Hester	57 Hazelton Ave.	20.00	10.00	10.00	III	20.00
Rice Miss H. C. A.	St. Mary's	36.00	18.00	18.00	IV	36.00
Ross J. M.	46 Hazelton Ave.	8.00	8.00		Spec	8.00

1906-6.

NAME.	ADDRESS.	Amount.	First Instalment.	Second Instalment.	Third Instalment.	TOTAL.
Rennie, Isabel	48 Hayden	8.00	8.00		Spec	8.00
Roberts Lottie	21 Scarth St.	8.00	8.00		"	8.00
Robman, Frank H.	Callants	36.00	Schp		Schp	
Robertson H. W.	Wallerburg				18.00	
Reynolds Miss M.	St. Mary's				Spec.	

1906-7

NAME. ADDRESS. Amount. First Instalment. Second Instalment. Third Instalment. TOTAL.

NAME. ADDRESS. Amount. First Instalment. Second Instalment. Third Instalment. TOTAL.

S

1902-3

NAME.	ADDRESS.	Amount.	First Instalment.	Second Instalment.	Third Instalment.	TOTAL.
Spence W. H.	54 Hayden Newbridge	36.00	18 <sup>00</sup>	18 <sup>00</sup>	III	36.00
Scott Miss Bellah	816 Gar St	18.00	18 <sup>00</sup>	I	I	18.00
Stinson L. H.	87 Brunswick Garrison	36.00	36 <sup>00</sup>	I	I	36.00
Spence Miss Agie	357 Ontario	36.00	36 <sup>00</sup>	I	II	36.00
Smith L. P.	83 Cowan Ave	36.00	18 <sup>00</sup>	21.00	II	36.00
Smith C. G.	571 Church	18.00	18 <sup>00</sup>	I	II	18.00
Smith C. M.	422 Waterloo Chesterville	36.00	18 <sup>00</sup>	18 <sup>00</sup>	I	36.00
Salter Wesley J.	16 Baldwin Behawa	36.00	18 <sup>00</sup>	18 <sup>00</sup>	II	36.00
Stodart Miss L.	232 Mc-Caul	6.00	3 <sup>00</sup>	3 <sup>00</sup>	Spec	6.00
Sternberg Frank	18 Juydal	36.00	-	-	II	36.00
Spenceley J. A.	225 Borden St 20 Rowland	36.00	18 <sup>00</sup>	18 <sup>00</sup>	II	36.00
Switzer Anna B.	197 Church St	36.00	18 <sup>00</sup>	18 <sup>00</sup>	II	36.00
Stansell Norman	Scrapperville	36.00	18.00	18.00	I	36.00
Stanley A. P.	15 Bleecker St	20.	-	-	-	20.00
St John A. H.	7 Bowdoin Ave	20	-	-	-	20.00
Stapleford E. W.	22 St Mary St Catherine	20	-	-	-	20.00
Shaver A. W.	408 George St Little Britain	20	-	-	-	20.00
Smart W. S.	534 Parliament	20.	-	-	-	20.00
Snell Isaac	122 Fern Ave	20.	-	-	-	20.00
Sturtevant Mrs. Mary	166 Beech St City	6.00	6 <sup>00</sup>	-	Spec	6.00
Squire Miss M. W.	100 West Cliff	3.00	3.00	-	-	3.00
Scott Miss	-	3.00	3.00	-	-	3.00
Sweetman Mrs	-	3.00	3.00	-	-	3.00

1903-1904

NAME.	ADDRESS.	Amount.	First Instalment.	Second Instalment.	Third Instalment.	TOTAL.
Scott Miss Mary	Amesbury Place	18.00	9.00	9.00	I	18.00
Shaver Thomas J.	Greenstone 60 Greenville	36.00	18.00	18.00	I	36.00
Stephenson Geo. D.	111 Montrose	36.00	18.00	18.00	I	36.00
"	A. E.	36.00	9.00	18.00	I	36.00
Shaver Gordon	388 Parliament	36.00	18.00	18.00	I	36.00
Scott Miss Bellah	Amesbury Place	18.00	9.00	9.00	II	18.00
Smith Edith M.	244 Salisbury	36.00	18.00	18.00	II	36.00
Spence Miss Agie	357 Ontario	36.00	18.00	18.00	III	36.00
Smith Edna	571 Church	18.00	9.00	9.00	III	18.00
Spencerley J. A.	162 Robert St	36.00	18.00	18.00	III	36.00
Salter Wesley J.	16 Baldwin Behawa	36.00	18.00	18.00	III	36.00
Spence W. H.	7 Gloucester	36.00	18.00	18.00	II	36.00
Smith Arthur	571 Church	18.00	9.00	9.00	I	18.00
Drifton Miss Julia	200 Essex St	20.00	10.00	-	Spec	10.00
Smith Miss M. H.	333 Church St	13.00	6.50	6.50	Spec	13.00
Sturtevant George	16 Bowdoin Ave	5.00	5.00	-	Spec	5.00
Switzer Annie B.	20 Mattland	32.00	16.00	16.00	III	32.00
Smith W. G.	-	20.00	-	-	-	20.00
Stanley A. P.	15 Bleecker	20.00	-	-	-	20.00
Shaver A. W.	-	20.00	-	-	-	20.00
Smart W. S.	534 Parliament	20.00	-	-	-	20.00
Sweetman Mrs W. B.	150 West Cliff	3.00	3.00	-	Spec	3.00
Scott Miss	-	13.00	13.00	-	-	13.00
Shaver W. C.	176 Melrose	36.00	18.00	18.00	-	36.00



1904-05.

NAME.	ADDRESS.	Amount.	First Instalment.	Second Instalment.	Third Instalment.	TOTAL.
Anders E. G.	Stouffville 26 St Joseph Edinburgh	20.00	5.00	5.00	5.00	20.00
Stapleford E. W.	73 Grand West Britain	20.00	5.00	5.00	5.00	20.00
Shaver A. W.	24 Sussex Ave	20.00	5.00	5.00	5.00	20.00
Shibley W. B.	23 Cypress St.	20.00	5.00	5.00	5.00	20.00
Spence W. R. H.	54 Huntley St.	36.00	18.00	18.00	—	36.00
Starkiss Mrs. B. G.	33 Marlborough	36.00	18.00	18.00	—	36.00
Smith H. H.	57 Cumberland	36.00	18.00	18.00	—	36.00
Smith L. L.	57 Church	18.00	9.00	9.00	—	18.00
Shibley A. G.	48 Blenheim	36.00	—	—	—	36.00
Steele Geo. A.	575 York St.	36.00	18.00	18.00	—	36.00
Stockton R. P.	Monte Plango 200 100 Kitchener	36.00	18.00	18.00	—	36.00
Sheridan Harold J.	46 Sussex Ave	36.00	18.00	18.00	—	36.00
Shotton Mrs. S. D.	Guinogon Munich Hall	20.00	10.00	10.00	—	20.00
Stephenson H. B.		36.00	18.00	18.00	—	36.00
Stewart Miss Bella	499 Manning	18.00	9.00	9.00	—	18.00
Shaver W. B.	24 Sussex Ave	36.00	18.00	18.00	—	36.00
Spensley James	162 Robert St.	36.00	18.00	18.00	—	36.00
Smith Edwin G.	571 Church	18.00	9.00	9.00	—	18.00
Smizer Annie B.	Manoch 20 Marlton	36.00	18.00	18.00	—	36.00
Saunders W. J.	166 Robert St.	36.00	18.00	18.00	—	36.00
Sargent Miss H. M.	Boissvain Dorchester	11.00	5.50	5.50	—	11.00
Sherwin Miss G.	201 Beverley	14.00	—	—	—	14.00
Scott Miss D.			—	—	—	—
Spence Mrs. L. G.	554 Spadina Ave	36.00	18.00	18.00	—	36.00
Stonbury Frank	18 Dundas St. W.	31.00	—	—	—	31.00
Smith Miss M. B.	52 Cumberland	3.00	—	—	—	3.00

1904-1905

NAME.	ADDRESS.	Amount.	First Instalment.	Second Instalment.	Third Instalment.	TOTAL.
Barstland Miss	66 Blair W Miss H. Shapp	5.00	5.00	—	—	5.00
Sweetnam Mrs	School of Science	8.00	8.00	—	—	8.00
Smith Miss May		5.00	5.00	—	—	5.00
Londres, E. G.	1905-1906 Stouffville 309 Huron St	20.00	5.00	5.00	5.00	20.00
Shaver, C. H.	Little Broom 58 Hugden St	20.00	5.00	5.00	5.00	20.00
Shibley J. E.	650, 1/2 St.	20.00	5.00	5.00	5.00	20.00
Shipperson E. J.	20.00	20.00	—	—	—	20.00
Shaw J. G.	229 Dufferin	20.00	5.00	5.00	5.00	20.00
Shotton John L.	111 Mainland Victoria, B.C.	18.00	18.00	—	—	18.00
Spencer, Miss L. A.	Arncliffe Hall	36.00	18.00	18.00	—	36.00
Stanley, G. W.	417 Brock St. Schp.	—	—	—	—	—
Smith, Sarah C.	Carrie Armesley Hall	36.00	18.00	18.00	—	36.00
Sproule, H. F.	77 Louise	36.00	18.00	18.00	—	36.00
Smith Lillian H.	14 Park Rd. New Credit	18.00	9.00	9.00	—	18.00
Sharpe W. C.	121 Argenteuil St Cawley	18.00	18.00	—	—	18.00
Scott Robt. G.	36.00	18.00	18.00	—	—	18.00
Smith, Harry G.	Cost Down 744 Hazelton Ave	36.00	36.00	—	—	36.00
Spence Miss M. K.	54 Huntley	36.00	18.00	18.00	—	36.00
Shewen Myrtle	Marion Armesley Hall	36.00	36.00	—	—	36.00
Stockton, R. P.	Morrison St. John 100 Hazelton Ave	36.00	18.00	18.00	—	36.00
Smith S. B.	Leamy 3 Ketchum Ave	36.00	18.00	18.00	—	36.00
Sherris Miss J. G.	201 Beverley	19.00	19.00	—	—	19.00
Scott "M. B.	499 Manning	18.00	9.00	9.00	—	18.00
Stonkins Miss A. G.	33 Marlton	36.00	18.00	18.00	—	36.00
Stonking F.	18 Dundas St. W.	31.00	16.00	15.00	—	31.00
Scott Miss P. D.	499 Manning	18.00	9.00	9.00	—	18.00





J

1902-3

NAME.	ADDRESS.	Amount.	First Instalment.	Second Instalment.	Third Instalment.	TOTAL.
McCleaven J. H.	225 Dundas	18.00	10.00	8.00	I	18.00
Thompson M. H.	18 St. Mary St Toronto	36.00	36.00		I	36.00
Truman G. E.	16 Alexander Herwood	36.00	36.00		I	36.00
Thomas A. J.	36 Bazar St London	20.00	London Co-op			20.00
Thompson W. H.	28 St. Mary Toronto	20.00	Toronto			20.00

1903-1904

French W. H.	Richmond Hill	36.00	36.00		I	36.00
Fribble John H.	Sheburne 133 Burnhamton	36.00	18.00	18.00	I	36.00
Truman G. E.	Herwood 18 Bazar St	36.00	36.00		II	36.00
McCleaven J. H.	225 Dundas Toronto	18.00	10.00	18.00	II	18.00
Thompson M. H.	18 St. Mary Toronto	36.00	18.00	18.00	II	36.00
Thompson W. H.	28 St. Mary Toronto	20.00	Toronto Co-op			20.00
Thomas A. J.	36 Bazar St London	20.00	London			20.00
Frick E. W.	69 Bazar St	20.00	Bay			20.00

1904-05

NAME.	ADDRESS.	Amount.	First Instalment.	Second Instalment.	Third Instalment.	TOTAL.
Frick E. W.	Herwood		Toronto Co-op			
Turnbull H. H.	78 Bazar St Toronto	36.00	18.00	18.00	I	36.00
French W. H.	Richmond Hill Sheburne	36.00	18.00	18.00	II	36.00
Fribble John H.	54 Hazelton Sheburne	36.00	18.00	18.00	I	36.00
Thompson M. H.	Dundas St Toronto	36.00	18.00	18.00	III	36.00
Truman G. E.	18 Bazar St Herwood	36.00	36.00		III	36.00
Frick W. H.	402 Hurvitz Toronto	15.00	7.50	7.50	April	7.50

1905-6

Todd, Thos R.	18 Bazar St Toronto	20.00	Hamilton		I	20.00
Todd, J. Edgar	18 Bazar St Toronto	20.00	Toronto		I	20.00
Trattler Stanley	11 Montague Toronto	36.00	18.00	2.00	II	20.00
Turnbull, Herbert	10 Belmont Toronto	36.00	18.00	18.00	II	36.00
Thompson, Kate R.	100 Bazar St Toronto	36.00	18.00	18.00	IV	36.00
Fribble John H.	54 Hazelton Toronto	36.00	18.00	18.00	III	36.00
French W. H.	Richmond Hill Toronto	36.00	18.00	18.00	III	36.00
Truman G. E.	5 Leather Ave Toronto	36.00	36.00		IV	36.00

1946-7

NAME.	ADDRESS.	Amount.	First Instalment.	Second Instalment.	Third Instalment.	TOTAL.

NAME.	ADDRESS.	Amount.	First Instalment.	Second Instalment.	Third Instalment.	TOTAL.

NAME.	ADDRESS.	Amount.	First Instalment.	Second Instalment.	Third Instalment.	TOTAL.
Unger, Thos. W.	42 Boswell Napauce	36.00	✓	✓	I	Schp.
Van Deyne - S. C.	42 Boswell Napauce	36.00	18.00	18.00	II	36.00.

1903-1904.

Van Deyne, Thos. W.	Napauce 156 Avenue Street	36.00	18.00	18.00	III	36.00
Unger, Eckel May	Napauce Hamlety Hall	36.00	Schp.	-	II	Schp.

1904-1905

Vance, Ben	Americus.	36.00	18.00	18.00	II	36.00
Van Deyne, Thos. W.	Napauce 31 Avenue Street	36.00	18.00	18.00	II	36.00

1905-6

Vokes, Grace E.	7 Stoneyard.	5.00	5.00	-	I	5.00
Harris, John	44 Stone E.	36.00	36.00	-	I	36.00

1906-7

NAME.	ADDRESS.	Amount.	First Instalment.	Second Instalment.	Third Instalment.	TOTAL.
-------	----------	---------	-------------------	--------------------	-------------------	--------

V. 195-6

NAME.	ADDRESS.	Amount.	First Instalment.	Second Instalment.	Third Instalment.	TOTAL.
<i>Valley Grange of Hamstead</i>	<i>see</i>				<i>Spec</i>	

NAME.	ADDRESS.	Amount.	First Instalment.	Second Instalment.	Third Instalment.	TOTAL.
-------	----------	---------	-------------------	--------------------	-------------------	--------





N.

1902-3

NAME.	ADDRESS.	Amount.	First Instalment.	Second Instalment.	Third Instalment.	TOTAL.
Wallace J. H.	81 Robert St North Dover	36.00	18.00	18.00	II	36.00
Williams E. Jr.	121 Newland St Greenwood	18.00	18.00	I		18.00
Walker L. D. & A.	60 Yorkville Merlin	18.00			III	Schp
Ward C. H.	4 Kensington Paris	36.00			III	Schp
Wilson M. C.	Paris	36.00	36.00	I		36.00
Watts Miss S. C.	359 Euclid Ave	18.00	9.00	9.00	III	18.00
Walker Edna	10 Pine Street 42 Roswell Ave	36.00	18.00	18.00	II	36.00
Webber Edw. H.	Glencoe 81 Brunswick	36.00	18.00	18.00	III	36.00
Wright E. M.	Beausville	18.00	9.00	9.00	II	18.00
Wright W. G.	110 Gerrard St Aurora	18.00	9.00	9.00	II	18.00
Webster Arthur	Aurora	36.00	18.00	18.00	II	36.00
Will Miss Edith	134 Howland St 18 St Mary St	18.00	9.00	9.00	II	18.00
Wilson Alice C.	Coburn	36.00	36.00	I		36.00
Wilson J. C.	40 Byatt St Edna	36.00	18.00	18.00	II	36.00
Webb Charles H.	7 Byatt Aurora	36.00	18.00	18.00	II	36.00
Warren H. B.	79 Robert St Aurora	36.00	18.00	18.00	II	36.00
Watson G. A.	6 St Patrick St 81 Robert St	18.00	18.00	I		18.00
Wallace Miss C.	North Dover	36.00	18.00	18.00	II	36.00
Wallace Edward W.	73 Bedford 57 Highland				IV	Schp
Walker Charles H.	Kingston					18.00
Winter Mrs Rose	7 Brunswick 114 Niagara	5.00	5.00	I		5.00
Wellwood H. C.	53 Dundas 32 Alexander	20.00	Formal	Surf		20.00
Walden U. A.	Maple Grove	20.00	London			20.00
Wilson C. J.	26 St Mary 41 Plymouth 26 St Albans St	20.00				20.00
Wells J. H.	Fernside	20.00	Hamilton			20.00
Whitman A. L.	26 Byatt Pitton	20.00	Byatt			20.00

U.

1902-03

NAME.	ADDRESS.	Amount.	First Instalment.	Second Instalment.	Third Instalment.	TOTAL.
Walker J. W.	442 Backville Hurrieston	20.00	Formal	Surf	20.00	20.00
Walker David W.	41 Byatt St Paris	36.00	18.00	18.00	II	36.00
Walton Miss F.	700 West Hill	3.00	3.00			3.00
Wincoc Isabel		5.00	5.00			5.00

1903-1904

NAME.	ADDRESS.	Amount.	First Instalment.	Second Instalment.	Third Instalment.	TOTAL.	
Woodsworth H. & S.	105 Yorkville	18.00	9.00	9.00	I	18.00	
Walton Morley	Paris	36.00	18.00	18.00	II	36.00	
Walker Miss Edm.	12 Pinefields	36.00	18.00	18.00	III	36.00	
Wallace - Ethel	108 Pinefields North Green	36.00	20.00	16.00	III	36.00	
Walton	18 St Mary	36.00	18.00	18.00	III	36.00	
Ward Chas. F.	4 Kensington	36.00	18.00	2.00	IV	36.00	
Walt Miss S. C.	359 Emerald Ave	18.00	9.00	9.00	II	18.00	
Webber - Eschell	100 Emerald Ave Green	36.00	18.00	18.00	II	36.00	
Walker Dorothy	16 St Joseph	15.50	8.00	7.50	IV	15.50	
Wallace James H.	14 Pinefields Green				19.00	1.50	
Warren H. K.	147 Green St	36.00	18.00	18.00	II	36.00	
Williams Mrs J. J.	100 Yorkville Belleville	18.00	9.00	9.00	II	18.00	
Wilson Geo. Albert	104 Yorkville	36.00	not in attendance				
Wolfe C. H.	596 York St North Green	20.00	Hans Conf				20.00
Walden W. C.	74 Yorkville	20.00	London				20.00
Wilson G. J.	Milverton	20.00					20.00
Wren Elvid	Kensall 37 Green St	20.00					20.00
Willinsky Mrs F.	School of Progress	8.00	8.00			Spec	8.00
Wallon		8.00	8.00				8.00
Walcox - J.		13.00	13.00				13.00
Walt Miss Ada	359 Emerald Ave Belleville	3.00	1.50	not in attendance		Spec	1.50
Walker Herman E.	Belleville	18.00	18.00			I	18.00
Wallace Mary Jane	Belleville 288 Kensington	18.00	18.00			II	18.00
Wilkin J. D.		20.00	Hans Conf				20.00
Wells J. H.		20.00	Hans Conf				20.00

1904-1905

NAME.	ADDRESS.	Amount.	First Instalment.	Second Instalment.	Third Instalment.	TOTAL.	
Wilson J. B.	57 Cumberland Maple Grove	20.00	Hans Conf				20.00
Walden W. C.	28 St Mary St Kensall	20.00	London				20.00
Wren Ed.	37 Green St Belleville	20.00					20.00
Wells J. H.	37 Green St Hartford	20.00	Hans Conf				20.00
Wolfe C. H.	23 North St	20.00					20.00
Wallace Ada C.	358 Yorkville Belleville	36.00	18.00	18.00	I	36.00	
Walker Herman E.	18 St Mary	36.00	18.00	18.00	I	36.00	
Woodworth H. & S.	105 Yorkville Belleville	18.00	9.00	9.00	II	18.00	
Williams G. J.	Kensall	18.00	9.00	9.00	II	18.00	
Walker Edm.	12 Pinefields North Green	36.00	18.00	18.00	II	36.00	
Wallace Miss Ethel	108 Pinefields Green	36.00	18.00	18.00	II	36.00	
Wallace Mrs M. J.	95 Bedford St		Spec				
Woodworth G. J.	Kensall	13.00	6.50	6.50		13.00	
"	"	14.00	7.00	7.00		14.00	
Wong A. Mae	Kensall	3.00	1.50	1.50		3.00	
Wilson Morley C.	Paris, Ont.	31.00	15.50	15.50	III	31.00	
Walford E. C.	Belleville	3.50	3.50			7.00	
Wartman Wm	16, 288 Kensington St	30.00	30.00			I	30.00
Wallace E. W.	95 Bedford St	P. C.					P. C.
Willinsky Miss A.	362 Green St	8.00	8.00			Spec	8.00



Y.

1902-03

NAME.	ADDRESS.	Amount.	First Instalment.	Second Instalment.	Third Instalment.	TOTAL.
Young E. H.	210 Jarvis St 53 St Melrose	36.00	18.00	18.00	-	36.00
Young W. W.	Jamieson	20.00	10.00	10.00	-	20.00
Young Mrs J. C. McSpence	Steff	5.00	5.00	-	-	5.00

1903-1904

Young Miss School of Expression 13.00 13.00 - Spec 13.00

1904-1905

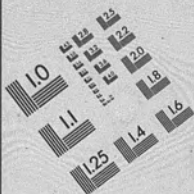
Young Miss L. School of Expression 3.00 3.00 - Spec 3.00

1906-7

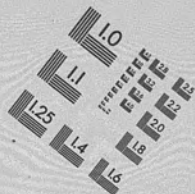
NAME. ADDRESS. Amount. First Instalment. Second Instalment. Third Instalment. TOTAL.

NAME.	ADDRESS.	Amount.	First Instalment.	Second Instalment.	Third Instalment.	TOTAL.
			18 <sup>00</sup>	18 <sup>00</sup>		
<u>1903-1904</u>						
1 Gurbigg Fred	New Hamburg 4 1/2 Gyar St	36.00	18.00	18.00	II	36.00
1 Gurbigg J. M.	<sup>1904-05</sup> New Hamburg 26 Gyar St.	36.00	18.00	18.00	II	36.00
Gurbigg J. M.	<sup>1905-6</sup> New Hamburg 26 Gyar St	36.00	18.00	18.00	II	36.00
Gurkare W. E.	<sup>1905-6</sup> New Hamburg 31 Gyar St	18.00	18.00	-	I	18.00

NAME. ADDRESS. Amount. First Instalment. Second Instalment. Third Instalment. TOTAL.



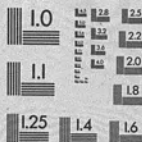
Association for Information and Image Management  
1100 Wayne Avenue, Suite 1100  
Silver Spring, Maryland 20910  
301-587-8202



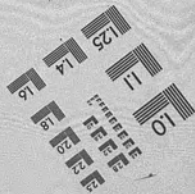
Centimeter

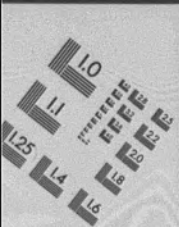


Inches

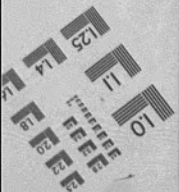


MANUFACTURED TO AIMM STANDARDS  
BY APPLIED IMAGE, INC.





13 14 15 mm



END OF  
TITLE